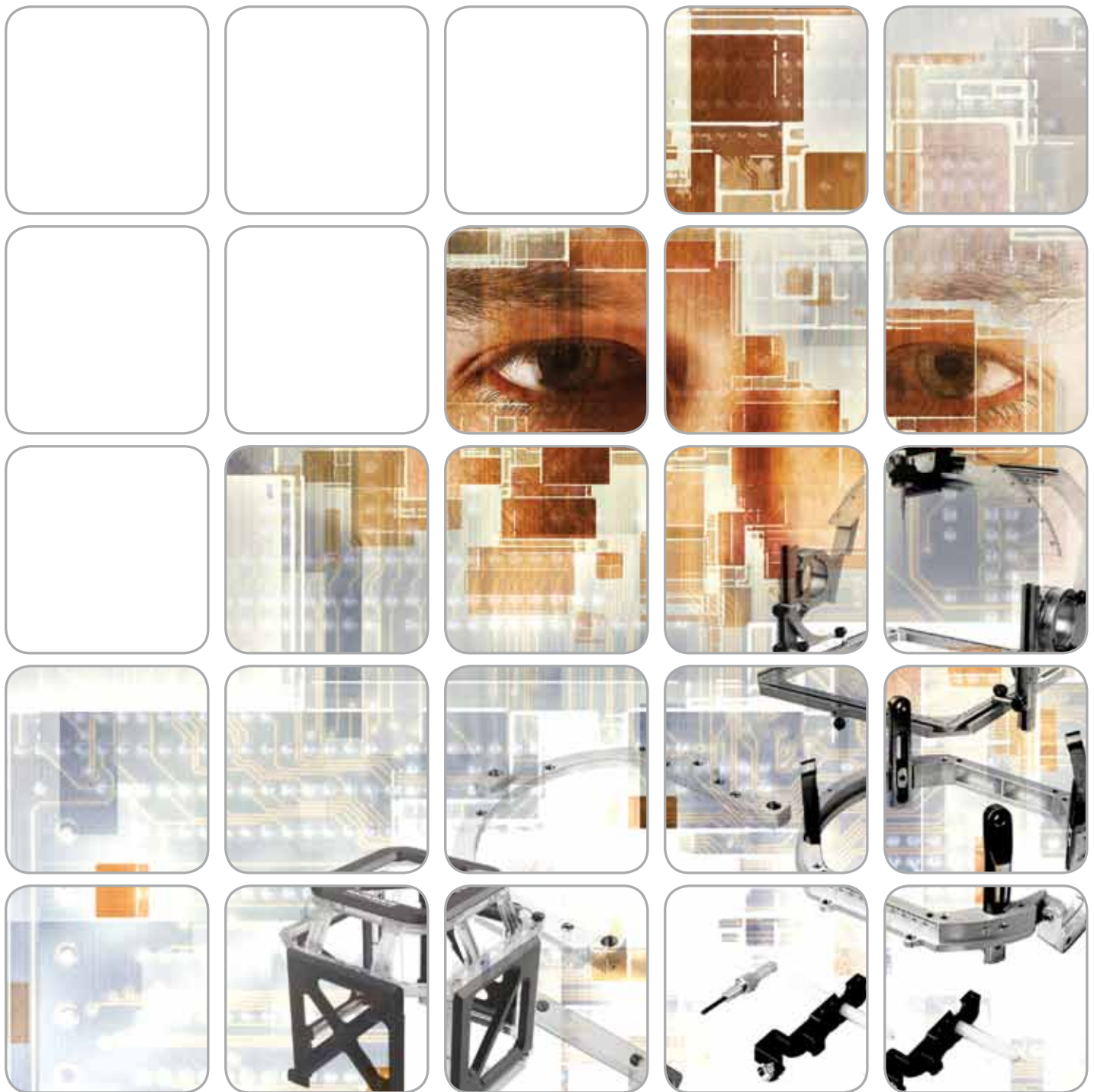


STEREOTAXY

PRODUCT CATALOG



RADIONICS® CRW® STEREOTACTIC SYSTEM

Pricing

Prices stated in specific written quotations are firm for thirty days from the date given, and are otherwise subject to change without prior notice. Pricing terms stated on written agreements are governed by such agreements.

Minimum Order Requirements

Minimum order requirement is \$250 (a \$20 handling charge will be added to any order under \$250). For partial case orders, contact the Customer Service Department for a quotation.

Ordering Procedure

A written purchase order on the customer's form may be requested for purchases of Integra LifeSciences products.

Acceptance of Orders

Orders are accepted upon approval by Integra Customer Service.

Return Policy

- Authorization from customer service must be obtained prior to returning product.
- Sterile product must be returned in unopened, undamaged cartons, packed to prevent damage.
- Non-sterile product must be returned in unused saleable condition in original package.
- Custom or special order products will not be accepted for credit.
- Credit will be issued for goods returned prior to ninety days from ship date with a 20% restocking charge. This assumes that the product returned is not damaged and can be verified to have not been used or opened.

Contact Information

311 Enterprise Drive
Plainsboro, NJ 08536 USA

Customer Service

Toll-Free: 800-654-2873 (US and Canada)
Telephone: 609-275-0500 (International)
Fax: 609-275-5363

Technical Support

Toll-Free: 888-772-7378 (US and Canada)
Telephone: 781-272-1233 (International)

Integra Warranty for Radionics® CRW® Stereotactic System

1. Warranty

Integra LifeSciences Corporation d/b/a ("Integra NeuroSciences") warrants to the original purchaser only that each new Integra NeuroSciences product is free from manufacturing defects in material and workmanship under normal use and service for a period of one year from the date of delivery by Integra NeuroSciences to the first purchaser, but in no event beyond the expiration date stated on any product labeling.

- Surgical instruments are guaranteed to be free from defects in material and workmanship when maintained and cleaned properly and used normally for their intended purpose.
- Any covered product that is placed by Integra NeuroSciences under a lease, rental or installment purchase agreement and that requires repair service during the term of such placement agreement shall be repaired in accordance with the terms of such agreement.

If any covered defect occurs during the warranty period or term of such placement agreement, the purchaser should communicate directly with Integra NeuroSciences' home office. If purchaser seeks to invoke the terms of this warranty, the product must be returned to Integra NeuroSciences at its home office. The defective product should be returned promptly, properly packaged and postage prepaid. Loss or damage in return shipment to Integra NeuroSciences shall be at Customer's risk. Integra NeuroSciences sole responsibility under this warranty shall be repair or replacement, at the sole discretion and expense of Integra NeuroSciences, subject to the terms of this warranty and applicable agreements.

IN NO EVENT SHALL INTEGRA NEUROSCIENCES BE LIABLE FOR ANY INCIDENTAL, INDIRECT, CONSEQUENTIAL OR PUNITIVE DAMAGES IN CONNECTION WITH THE ACQUISITION OR USE OF ANY INTEGRA NEUROSCIENCES PRODUCT. Further, this warranty shall not apply to, and Integra NeuroSciences shall not be responsible for, any loss arising in connection with the purchase or use of any Integra NeuroSciences product that has been repaired by anyone other than an authorized Integra NeuroSciences service representative or altered in any way so as, in Integra NeuroSciences judgment, to affect its stability or reliability, or which has been subject to misuse, negligence or accident, or which has been used otherwise than in accordance with the instructions furnished by INTEGRA NEUROSCIENCES. THIS LIMITED WARRANTY IS EXCLUSIVE AND IN LIEU OF ALL OTHER WARRANTIES, EXPRESS OR IMPLIED, AND OF ALL OTHER OBLIGATIONS OR LIABILITIES ON THE PART OF INTEGRA NEUROSCIENCES, AND INTEGRA NEUROSCIENCES NEITHER ASSUMES NOR AUTHORIZES ANY REPRESENTATIVE OR OTHER PERSON TO ASSUME FOR IT ANY OTHER LIABILITY IN CONNECTION WITH INTEGRA NEUROSCIENCES PRODUCTS.

INTEGRA DISCLAIMS ALL OTHER WARRANTIES, EXPRESS OR IMPLIED INCLUDING, BUT NOT LIMITED TO ANY IMPLIED WARRANTIES OF MERCHANTABILITY OR OF FITNESS FOR A PARTICULAR PURPOSE, AND ANY IMPLIED WARRANTY ARISING FROM COURSE OF PERFORMANCE, COURSE OF DEALING, USAGE OR TRADE OR OTHERWISE, OR APPLICATION OR WARRANTY OF QUALITY AS WELL AS ANY EXPRESS OR IMPLIED WARRANTY TO PATIENTS. No warranty or guarantee may be created by any act or statement nor may this Standard Warranty be modified in any way, except as a result of a writing signed by an officer of INTEGRA. These limitations on the creation or modification of this warranty may not be waived or modified orally or by any conduct.

2. Service, Repairs and Replacement

- 2.1. *Service and Repairs.* All service and repairs covered by this Warranty may be referred to hereinafter as "in-warranty repairs," and all service and repairs not covered by this Warranty may be referred to as "out-of-warranty repairs." Customer shall be responsible to pay Integra NeuroSciences' then-standard charges for any out-of-warranty repairs performed by Integra NeuroSciences. Integra NeuroSciences' sole obligation for Equipment defects and failures of performance shall be to make all necessary adjustments and repairs in accordance with this Warranty.
- 2.2. *Equipment Replacement.* The defective Equipment or part thereof that is replaced in accordance with the Warranty shall be the property of Integra NeuroSciences. Integra NeuroSciences reserves the right to fill spare parts requests using refurbished sub-assemblies provided that such sub-assemblies are functionally equivalent to new sub-assemblies and carry the same warranty as the replaced sub-assemblies.
- 2.3. *Notification.* In order to avail itself of its rights under the Warranty, Customer must immediately notify Integra NeuroSciences of any defects and provide Integra NeuroSciences every opportunity to inspect and remedy defects.

3. Repair Parts and Services

- 3.1. Included under the Warranty are the following services:
 - 3.1.1. *Modifications to Covered Equipment.* From time to time, at its sole discretion, Integra NeuroSciences may propose modifications to the covered Equipment and to the specifications for the Equipment ("Specifications"). Subject to Customer's approval and at its sole expense, the Customer may request Integra NeuroSciences to make such modifications to the covered Equipment and to the Specifications. Integra NeuroSciences shall make such modifications for the Customer, which modifications may include the installation of new parts in the Equipment, at a price equal to the then-current list price for such modifications, as such list price is established by Integra NeuroSciences in its sole discretion.

4. Quality Control

- 4.1. Customer shall maintain reasonable standards of quality control, operations, procedures, safety testing and inspection of Equipment to ensure that unnecessary service or maintenance is not required hereunder.
- 4.2. Customer shall provide a technical counterpart to Integra NeuroSciences' Service Agent for assistance in Integra NeuroSciences' telephonic diagnosis of the malfunction with the Equipment. Customer shall reasonably accept Integra NeuroSciences' determination whether a repair or service is an in-warranty repair or an out-of-warranty repair.

5. Limitation of Liability

- 5.1. THE WARRANTIES DESCRIBED IN SECTION 1 HEREOF ARE EXCLUSIVE AND ARE GIVEN AND ACCEPTED IN LIEU OF ALL OTHER WARRANTIES OF INTEGRA NEUROSCIENCES OR ITS SERVICE AGENTS WITH RESPECT TO THE QUALITY, PERFORMANCE AND OPERATION OF THE EQUIPMENT, WRITTEN OR ORAL, EXPRESSED OR IMPLIED, AND WHETHER OR NOT ATTRIBUTABLE TO SERVICE PERFORMED PURSUANT TO THE WARRANTY. ALL OTHER REPRESENTATIONS OR WARRANTIES OF INTEGRA NEUROSCIENCES OR ITS REPRESENTATIVES, EXPRESS OR IMPLIED, WITH RESPECT TO THE EQUIPMENT OR THE SERVICES, DIAGNOSES, ADVICE, ASSISTANCE OR PARTS TO BE TENDERED PURSUANT TO THE WARRANTY, INCLUDING, WITHOUT LIMITATION, THOSE OF MERCHANTABILITY AND FITNESS FOR A PARTICULAR PURPOSE, ARE HEREBY EXPRESSLY DISCLAIMED. IN NO EVENT SHALL INTEGRA NEUROSCIENCES, ITS AFFILIATES, ASSIGNEES OR SERVICE AGENTS BE LIABLE FOR LOSS OF USE, REVENUE OR PROFIT OR ANY OTHER DIRECT, INDIRECT, INCIDENTAL, EXEMPLARY, CONSEQUENTIAL, SPECIAL OR OTHER DAMAGES, WHETHER ARISING IN CONTRACT OR IN TORT, BY VIRTUE OF THE WARRANTY OR ANY PERFORMANCE OR BREACH BY INTEGRA NEUROSCIENCES, ITS AFFILIATES, ASSIGNEES OR SERVICE AGENTS HEREUNDER OR PURSUANT HERETO IN EXCESS OF THE AMOUNTS PAID BY CUSTOMER TO INTEGRA NEUROSCIENCES DURING THE WARRANTY PERIOD.
- 5.2. Customer agrees that, notwithstanding the technical assistance provided pursuant to the Warranty by Integra NeuroSciences or its representatives, Customer shall be fully responsible for all treatments performed or attempted with the Equipment. INTEGRA NEUROSCIENCES MAKES NO REPRESENTATION OR WARRANTY AS TO THE EFFICACY OF THE EQUIPMENT OR OF THE TECHNICAL ASSISTANCE TO BE RENDERED BY INTEGRA NEUROSCIENCES, ITS AFFILIATES, ASSIGNEES OR SERVICE AGENTS, FOR PURPOSES OF THE PARTICULAR TREATMENT THAT CUSTOMER UNDERTAKES TO PERFORM FOR THIRD PARTIES. Moreover, Customer shall not make any claim against Integra NeuroSciences or any of its affiliates, assignees or representatives with respect to the efficacy of the Equipment or of said technical assistance or with respect to any claims by third parties related to any treatment undertaken by Customer.
- 5.3. *Force Majeure.* Notwithstanding anything to the contrary herein contained, if the performance of the Warranty by Integra NeuroSciences or Customer or any obligation of Integra NeuroSciences or Customer hereunder is prevented, restricted or interfered with by reason of fire, explosion, act of God, labor disputes or accidents affecting performance under the Warranty, or war, mobilization, civil commotions, blockade or embargo, or any future law, regulation, ordinance or requirement of any government or regulatory agency or any other act, whatsoever similar to those above enumerated, or any other circumstance being beyond the reasonable control of Integra NeuroSciences or Customer, then and in that event Integra NeuroSciences or Customer, as the case may be, shall promptly notify the other party hereto of the resulting difficulties therefrom, and any of the foregoing events shall excuse any performance required under the Warranty.

The Radionics® CRW® (Cosman-Roberts-Wells)

stereotactic system and Radionics® advanced surgical planning software represent the ultimate in safety and accuracy for frame-based stereotaxy. Numerous features make the Radionics CRW ideal for surgical applications such as brain tumor biopsies and Deep Brain Stimulator (DBS) implantation for movement disorders. The Radionics CRW stereotactic system maintains unparalleled rigidity regardless of patient movement during the most demanding functional procedures. The rugged design of the Radionics CRW is constructed of high tensile strength aircraft grade aluminum enabling it to support heavy accessories such as a microelectrode drive without flexing. All coordinate settings are set with vernier scales and secured with double-lock titanium screws. The Radionics CRW Phantom Base provides invaluable independent target verification and quality assurance. In addition, the capability to completely cover the head ring with a single sterile drape ensures an unbroken sterile field even with arc setting and orientation modifications.

Two software options are seamlessly integrated with the Radionics CRW instrumentation. StereoCalc™ is a simple software solution for target and trajectory coordinates, eliminating the need for CT/MR clamping and manual coordinate calculations. ImageFusion™, NeuroSight® Arc, and AtlasPlan™ target planning software combine with the Radionics CRW to create the most comprehensive system available for treating patients with movement disorders.

This catalog is designed to facilitate the ordering process of Radionics CRW components, accessories, and software. You may look forward to additional product guides and notifications from Integra Radionics as we develop new products to complement the Radionics CRW stereotactic system and advance the state of neurosurgery.

Customer Service:

Toll-Free: 800.654.2873 (US and Canada)

Telephone: 609.275.0500 (International)

Facsimile: 609.275.5363

Technical Support:

Toll-Free: 888.772.7378 (US and Canada)

Telephone: 781.272.1233 (International)

E-mail:

service@radionics.com (Technical Support)

Radionics® CRW® Stereotactic Surgical Products

Head Rings and Accessories

UCHRA



Universal Compact Head Ring

CT and MR scanner compatible when used with Radionics® Head Ring Screws; for use with BRWLF and LL01

Includes:

- Universal Head Ring
- Adapter Plate
- 2 Anterior and 2 Posterior Head Posts
- Cross Bar
- Cross Bar Screws
- Ear Bar Assembly
- 2 Head Ring Wrenches
- Cleaning Tap
- Sterilization Case
- User's Manual

UCHRAP



Arc Adapter Plate

The Adapter Plate allows attachment of the BRWLF and CRWASL to the UCHR

UCHRCASE



Storage and Sterilization Case

Only compatible with the UCHRA

Radionics® CRW® Stereotactic Surgical Products Head Rings and Accessories

UCHRP



Post and Cross Bar Kit

Includes:

- 1 Cross Bar—Allows alternative positioning of head ring screws
- 2 Anterior/2 Posterior Posts
- 2 Cross Bar Screws

Available Separately

- UCHRCB1—Head Ring Cross Bar
- UCHRPA—1 Anterior Post (short)
- UCHRPP—1 Posterior Post (long)
- UCHRCBS—Head Ring Cross Bar Attachment Screw

UCHREBA



Universal Compact Head Ring Ear Bar Kit

Includes: (2 each)

- Head Ring Supports
- Ear Posts
- UCHREB - Ear Bars, Includes 1 each - ear post

HRW



Head Ring Wrench

A universal wrench used on many of the screws found in the Radionics® CRW® System including the Head Ring drives, posts, and screws.

UCHRHK

Universal Compact Head Ring Hardware Kit

Includes:

- Adapter Plate Attachment Screws (4)
- Intubation Hoop Attachment Screws (2)
- Head Post Attachment Screws (4)
- Head Post Wedges (4)
- Ear Bar Assembly Attachment Screws (2)
- Ear Bar Assembly Nylon Thumb Screws (2)

Radionics® CRW® Stereotactic Surgical Products

Head Rings and Accessories

HRAIM



Intubation Head Ring Assembly

CT scanner compatible; for use with BRWLF

Includes:

Intubation Head Ring

4 Head Ring Drives

4 Head Ring Posts

Head Ring Wrench

Cleaning Tap

Head Ring Positioner

2 Conical Sliding T-bolt Screws

HRD



Head Ring Drive

HRDXS



Head Ring Drive Extender/ Shortener

Lengthens or Shortens the working length of the Head Ring Posts to allow treatment of low tumors or a wide range of head sizes.

HRP



Head Ring Post

Only compatible with the HRAIM

TAP



Cleaning Tap for HRP

(Not for use with Aluminum Posts)

Radionics® CRW® Stereotactic Surgical Products Head Rings and Accessories

HRKTP



Head Ring Positioner

Includes: (1 each)

Positioner Ring (not sold separately)

Velcro Strap (Also available in boxes of 5, use part No. GTCVS)

CSS



Conical T-bolt Screw

Includes:

CSS (1 short)—Used to attach the HRAIM and UCHRA Head Rings to the clamping plate and MAYFIELD® adapter

HREBA



Intubation Head Ring Ear Bar Kit

Includes: (2 each)

Head Ring supports

Ear Posts

HRIMS



Head Ring Sector

Converts the assembly to the closed ring configuration

HRIMTS

T Handle Screw

For Intubation Hoop

Radionics® CRW® Stereotactic Surgical Products

Imaging Localizers

BRWLF



CT Localizer Frame

The BRWLF is the standard in CT image localization for stereotactic procedures, requiring no clamping or scanner alignment when used with StereoCalc™ or NeuroSight® Arc software for target calculations.

LL01



Luminant® MR/CT Localizer Frame

The Luminant® MR/CT localizer represents the most advanced stereotactic localizer ever designed. The open and lightweight Luminant MR/CT localizer offers many improvements over previous localizers including no fiducial rod filing, fast and easy attachment to UCHRA, and clear and distinct rod imaging in many MR scan formats. Target calculations can be obtained manually using a clamping plate or independently (without a clamping plate) using StereoCalc™ or NeuroSight® Arc targeting software.

LL01—Luminant® MR/CT localizer with shipping and storage case

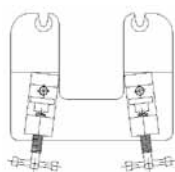
LL02—Shipping and storage case

Radionics® CRW® Stereotactic Surgical Products

CT Clamping Plates—used with Conical Sliding T-bolt Screws, Head Ring and Designated Couch to facilitate selection of the appropriate clamping plate, please provide a picture of the couch mount to customer support or your sales representative.

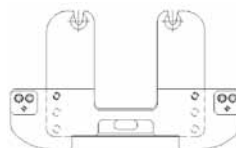
CTCPP

Philips



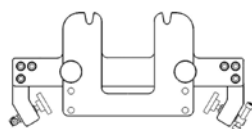
CTPGP

GE Pace



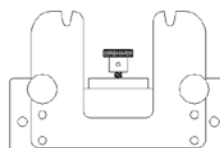
CTCPAURA

Philips Aura



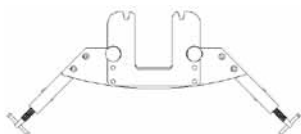
CTCPGEMF

GE Medalist



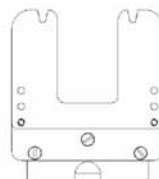
CTCPP2

**Picker PQ2000/
PQ5001**



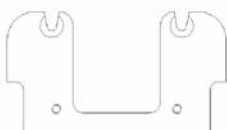
CTCPE

Elscint



CTCPPI

Picker 1200SX



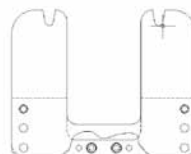
CTVC

Med Tec Flat Couch Top



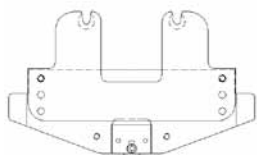
CTCPS

Siemens



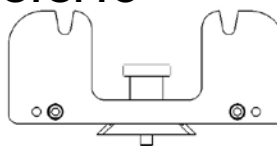
CTCPSH

Shimadzu



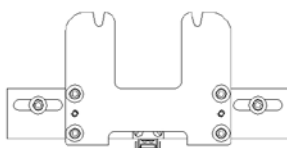
CTCPTO

Toshiba



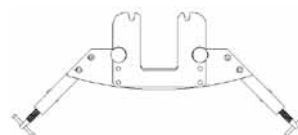
CTCPG9800

GE 9800 Adjustable



CTCPM

MedTec



Radionics® CRW® Stereotactic Surgical Products

Radionics® CRW® Arc

CRWASL Radionics® CRW® Lightweight Arc System



Includes:

- CRWLA**—Lightweight Arc (not sold separately)
- CRWASLPH**—Probe Holder (not sold separately)
- CRWASGB**—Guide Block
- KDG**—Keller Depth Gauge
- SR**—Stainless Steel Ruler
- SWTS**—Arc System Wrench
- CRWCASE**—Storage and Sterilization Case
- CRWMA**—MAYFIELD® Adapter
- DA27**—Drill Assembly, 2.7mm
- GT27116**—Guide Tube, 2.7mm I.D. x 116mm length
- GT2776**—Guide Tube, 2.7mm I.D. x 76mm length
- RB27**—Reducing Bushing, 2.7mm I.D.
- RTNBND76**—NBND I.D. x 76mm
- CSS** (2)
- User's Manual** (2)

Radionics® CRW® System Accessories and Components

CRWCASE

Storage and Sterilization Case



CRWASGB

Guide Block



KDG

Keller Depth Gauge



SR

Stainless Steel Ruler



SWTS

Arc System Wrench



The SWTS is used to remove both the anterior section of the Radionics® CRW® base plate and the HRAIM intubation hoop

MAYFIELD® Adapters



Enables clamping of the HRAIM and the UCHRA to the standard MAYFIELD® head-rest.

CRWMA - Long vertical extension arms allow anterior/posterior positioning of the Radionics CRW® Arc on the base plate. This alternative set-up makes very low lateral surgical approaches effortless.

CRWFMA—Positions the patient lower on the OR table when additional support is needed.

Radionics® CRW® Stereotactic Surgical Products

Radionics® CRW® System Accessories and Components

Guide Tubes



GT2776—2.7mm I.D. x 76mm length

GT27116—2.7mm I.D. x 116mm length

GT27160—2.7mm I.D. x 160mm length

GT3276—3.2mm I.D. x 76mm length

GT32116—3.2mm I.D. x 116mm length

GT32160—3.2mm I.D. x 160mm length

GT46116*—4.6mm I.D. x 116mm total length**

*no reducing tube or bushing required

**working length is 111mm

Guide Tubes with 2.7mm I.D. must be used with RB27 or any of the Reducing Tubes listed below. Guide Tubes with a 3.2mm I.D. are used with RB32 and are not compatible with Reducing Tubes.

Reducing Bushings



RB27—2.7mm I.D.

RB32—3.2mm I.D.

Reducing Bushings are compatible with Guide Tubes of matching I.D. and commonly used with Drill Assemblies.

CRWHK

Radionics® CRW® Arc Hardware Kit

Includes:

Trunion Ring Knob (2)

Probe Holder Screw (1)

Lateral Slide Lock Screw (2)

Slide Plate Screw (2)

Trunion Slide Screw (4)

Trunion Ring Screw (2)

Lateral Slide Lock (1)

Anterior Sector Screw (2)

Reducing Tubes



RT1176—1.1mm I.D. x 76mm length

RT11116—1.1mm I.D. x 116mm length

RT1676—1.6mm I.D. x 76mm length

RT16116—1.6mm I.D. x 116mm length

RT1876—1.8mm I.D. x 76mm length

RT18116—1.8mm I.D. x 116mm length

RT2076—2.0mm I.D. x 76mm length

RT20116—2.0mm I.D. x 116mm length

RT20160—2.0mm I.D. x 160mm length

RT2176—2.1mm I.D. x 76mm length

RT21116—2.1mm I.D. x 116mm length

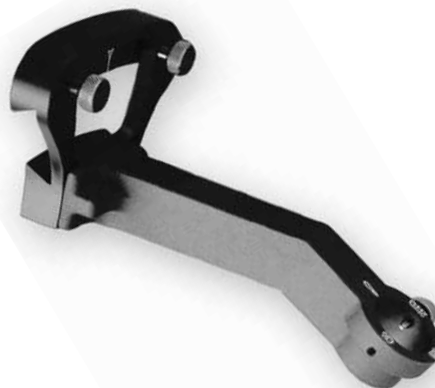
RTNBND76—NBND I.D. x 76mm length

RTNBND116—NBND I.D. x 116mm length

RTNBND160—NBND I.D. x 160mm length

Reducing Tubes are compatible with Guide Tubes with 2.7mm I.D. and matching length. Reducing Tubes are commonly used with needles and electrodes.

CRWMCPH30 30 Degree Offset Probe Holder



Provides maximum access to the surgical site by shifting the CRWASL lateral arc while maintaining trajectory and target setting.

Radionics® CRW® Stereotactic Surgical Products

Quality Assurance Components

CRWPBS



Phantom Base System

Includes:

RLPP—Rectilinear Phantom Base

CRWASP—Arc System Pointer

RLPPSP—Sterile Pointer

RLPPVS—Vertical Slide Assembly

RLPPSP



Sterile Pointer

For Phantom Base System

RLPPVS



Vertical Slide Assembly

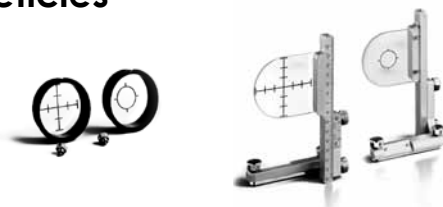
CRWASP



Radionics® CRW® Arc System Pointer

For use with Phantom Base System

Reticles



CRWTBSS—Lateral Trunion Reticles

CRWAPBS—Anterior/Posterior Reticles

Reticles sets are used with intraoperative x-ray to visually confirm electrode placement at target during functional procedure

CRWPBSHK

Phantom Base Hardware Kit

Includes:

Sphere Hole thumb screws (2)

Thumb Knobs 10-32 x 1/2" (2)

LTLF T-Side sub assembly (1)

AP/Vert locking screws

Screw and Cap 1/4" (1 each)

Radionics® CRW® Stereotactic Surgical Products

Single Use Only Sterile Devices

Apuzzo Stereotactic Drape



Sterile draping is easy with the Radionics® CRW® System and the Apuzzo Stereotactic Drape. Both Radionics® Head Rings operate independently from the Radionics® CRW® Arc and can be fully sterile draped after scanning. The large Apuzzo Stereotactic Drape has three small circular cutouts positioned to allow clean attachment of the Arc to the draped Head Ring. The drape also has a sticky pad to be applied at the surgical site

ASD1—Sterile Drape

ASD1B—Box of 10 Sterile Drapes

The Apuzzo Stereotactic Drape allows the Radionics® CRW® user to drape the head ring independently of the Arc and maintain sterility throughout the stereotactic procedure.

Disposable Head Ring Screws

MR/CT Compatible



These single-use Head Ring Screws are required for both Radionics® Head Rings; the Intubation Head Ring for CT scanning and the Universal Compact Head Ring for both CT and MR scanning. Rigid inner aluminum pins provide secure purchase to the patient's skull. They are available in two sizes, long and short

DHRSL5: 48mm/ Box of Long Screws 5 packs / 2 Screws per pack

DHRSS5: 34mm / Box of Short Screws 5 packs / 2 Screws per pack

CRWBP



CRW® BiopsyPlus Kit

Includes:

Nashold Biopsy Needle with depth and target markings (1)

Long biopsy bushing (90mm)

Short biopsy bushing (60mm)

Nylon thumbscrew for securing the bushing into the CRW® guide block (2)

12" Aspiration line

NBND

NBND5



Nashold Biopsy Needle, Disposable

Nashold Biopsy Needle, Disposable (Box of 5)

Radionics® Nashold Biopsy Needles are individually sterile packaged and are available in a box of 5.

249mm Needle Length

2.0mm O.D.

10mm Side Cutting Window

Compatible with:

RTNBND76 & GT2776

RTNBND116 & GT27116

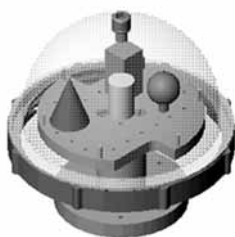
RTNBND160 & GT27160

Radionics® CRW® Stereotactic Surgical Products

Geometric Phantom

For CT and MR Scanner Validation

GEOSYS



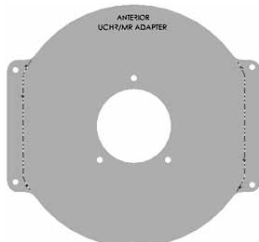
Geometric Phantoms provide a full independent check that head rings, localizers, CT or MRI scan images, and planning software all deliver accurate volumetric target localization.

GEOBRWAK



HRAIM Adapter Plate

GEOUCHRAK



UCHR Adapter Plate

GEOPH1

Geometric Phantom with HRAIM Adapter

Includes:

GEOSYS

GEOBRWAK

GEOPH3

Geometric Phantom with UCHR Adapter

Includes:

GEOSYS

GEOUCHRAK

Radionics® CRW® Stereotactic Surgical Products Instrument Drive System

CRWPMDD

Digital Probe MicroDrive



Includes:

Digital Probe MicroDrive

CRWPMDB20—2.0mm Bushing

CRWPMDB25—2.5mm Bushing

CRWPMDB30—3.0mm Bushing

PMDCASE—Sterilization Case

CRWMS

Probe Micro-Slide



Includes:

Probe Micro—Slide

CRWPMDB20—2.0mm Bushing

CRWPMDB25—2.5mm Bushing

CRWPMDB30—3.0mm Bushing

Radionics® CRW® Stereotactic Surgical Products

Drill and Kits

Drill Assemblies



DA27—2.7mm Drill Assembly with Depth Stop, Guide Tube, Hex Wrench

DA27D—2.7mm Drill Assembly with Hex Wrench

DA32—3.2mm Drill Assembly with Depth Stop, Guide Tube, Hex Wrench

DA32D—3.2mm Drill Assembly with Hex Wrench

DA46—4.6mm Drill Assembly with Depth Stop, Guide Tube, Hex Wrench

DA46D—4.6mm Drill Assembly with Hex Wrench

DA63—6.3mm Drill Assembly with Depth Stop, Guide Sleeve, Guide Block and Hex Wrench

DA63D—6.3mm Drill Assembly with Hex Wrench

Drill Depth Stops

DADS27—Drill Depth Stop for DA27

DADS32—Drill Depth Stop for DA32

DADS46—Drill Depth Stop for DA46

DADS63—Drill Depth Stop for DA63

SDK



Salcman Drill Kit

Includes:

DA63GB—Guide Block

DA63GS—Guide Sleeve

GT27116—Guide Tube, 2.7mm

GT32116—Guide Tube, 3.2mm

GT46116—Guide Tube, 4.6mm

RB27—Reducing Bushing, 2.7mm

RB32—Reducing Bushing, 3.2mm

SD20—Salcman Drill, 2.0mm

SD27—Salcman Drill, 2.7mm

SD32—Salcman Drill, 3.2mm

SD46—Salcman Drill, 4.6mm

SD63—Salcman Drill, 6.3mm (Salcman Drills Include Depth Stop)

SDD—Salcman Drill Driver

SDKCASE—Case

SDD



Salcman Drill Driver

DA63GB



Guide Block

For use with SD63 and DA63GS

DA63GS



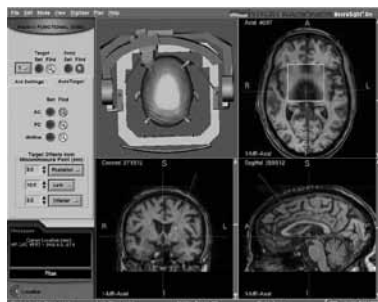
Guide Sleeve

For use with SD63 and DA63GB

Radionics® CRW® Stereotactic Surgical Products

Stereotactic Planning Software

ST1000



NeuroSight® Arc Software (Laptop)

NeuroSight® Arc Trajectory Planning Software reconstructs and displays multiple image sets for accurate 3D targeting and trajectory planning for functional neurosurgery, tumor biopsy, and any procedure requiring precise stereotactic planning. NeuroSight® Arc software features autotargeting, midline correction, and preplanning on non-localized images.

Also available:

ST2000—Module to OmniSight® Excel

ST3000—Desktop computer with 20" flat panel desktop, keyboard, mouse

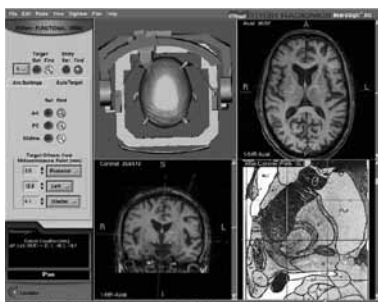
IF3000



ImageFusion™ Software

ImageFusion™ software correlates multiple image modalities including CT and a range of MR image types for the highest accuracy available.

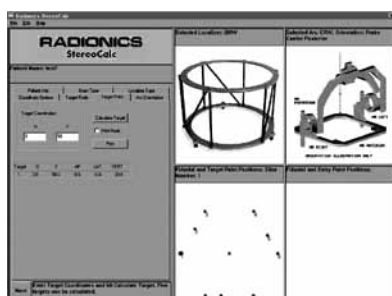
ATLASSW



AtlasPlan™ Software

AtlasPlan™ software is dynamically linked to NeuroSight® Arc and provides target confirmation using anatomic detail from a trusted source.

SCSWCD



StereoCalc™ Software (CD-ROM)

StereoCalc™ software is a unique, straightforward target planning software that eliminates the need for manual target coordinate calculations.

Also available:

HPPCI—StereoCalc™ on a laptop computer

Training

User's Manuals

15960003 Radionics® CRW® System

60901036 NeuroSight® Arc Software

72901270 ImageFusion™ Software

60901043 AtlasPlan™ Software

60901113 StereoCalc™ Software

Index

Symbols

30 Degree Offset Probe Holder 11
 30 Degree Offset Probe Holder- CRWMCPH30 11
 15960003 18
 15960003 Radionics™ CRW™ System 18
 60901036 18
 60901036 NeuroSight™ Arc Software 18
 60901043 18
 60901043 AtlasPlan™ Software 18
 60901113 18
 60901113 StereoCalc™ Software 18
 72901270 18
 72901270 ImageFusion™ Software 18

Alphabetical

A

Apuzzo Sterotactic Drape 13
 Arc Adapter Plate 4
 Arc Adapter Plater- UCHRAP 4
 Arc System Wrench- SWTS 10
 ASD1 13
 ASD1B 13
 AtlasPlan Software- ATLASW 17
 AtlasPlan™ Software 17
 ATLASW 17

B

BRWLF 8

C

Cleaning Tap for HRP 6
 Cleaning Tap for HRP- TAP 6
 Conical T-bolt Screw 7
 Conical T-bolt Screws 7
 CRWAPBS 12
 CRWASGB 10
 CRWASL 10
 CRWASP 12
 CRW BiopsyPlus Kit- CRWBP 13
 CRWBP 13
 CRWCASE 10
 CRWHK 11
 CRWMCPH30 11
 CRWMS 15
 CRWPBS 12

CRWPBBSHK 12
 CRWPMDB20 15
 CRWPMDB25 15
 CRWPMDB30 15
 CRWPMDD 15
 CRWTBSS 12
 CRW™ BiopsyPlus Kit 13
 CSS 7
 CT Clamping Plates 9
 CTCPAURA 9
 CTCPE 9
 CTCPG9800 9
 CTCPGEMF 9
 CTCPM 9
 CTCPP 9
 CTCPP2 9
 CTCPI 9
 CTCPS 9
 CTCPSH 9
 CTCPTO 9
 CT Localizer Frame 8
 CT Localizer Frame- BRWLF 8
 CTPGP 9
 CTVC 9

D

DA27 16
 DA27D 16
 DA32 16
 DA32D 16
 DA46 16
 DA46D 16
 DA63 16
 DA63D 16
 DA63GB 16
 DA63GS 16
 DADS27 16
 DADS32 16
 DADS46 16
 DADS63 16
 DAG3GS 16
 DAGS 16
 DHRSL5 13
 DHRSS5 13
 Digital Probe MicroDrive 15
 Digital Probe MicroDrive- CRWPMDD 15
 Disposable Head Ring Screws 13
 Disposable Head Ring Screws 13
 Drill and Kits 16
 Drill Assemblies 16
 Drill Depth Stops 16

E

Elscint 9
 Elscint- CTCPE 9

G

GE 9800 Adjustable 9
 GE 9800 Adjustable- CTCPG9800 9
 GE Medalist 9
 GE Medalist- \CTCPGEMF 9
 GEOBRWAK 14
 Geometric Phantom 14
 Geometric Phantom- GEOSYS 14
 Geometric Phantom with HRAIM Adapter 14
 Geometric Phantom with HRAIM Adapter- GEOPH1 14
 Geometric Phantom with UCHR Adapter 14
 Geometric Phantom with UCHR Adapter- GEOPH3 14
 GEOOUCHRAK 14
 GEOPH1 14
 GEOPH3 14
 GEOSYS 14
 GEOUCHRAK 14
 GE Pace 9
 GE Pace- CTPGP 9
 GT2776 11
 GT3276 11
 GT27116 11, 16
 GT27160 11
 GT32116 11, 16
 GT32160 11
 GT46116 11, 16
 Guide Block 16
 Guide Block- CRWASGB 10
 Guide Block- DA63GB 16
 Guide Sleeve 16
 Guide Sleeve-DAG3GS 16
 Guide Tubes 11

H

Head Ring Drive 6
 Head Ring Drive Extender/ Shortener 6
 Head Ring Drive Extender/ Shortener- HRDXS 6
 Head Ring Drive- HRD 6
 Head Ring Positioner 7
 Head Ring Post 6
 Head Ring Post- HRP 6
 Head Ring Postioner- HRKTP 7
 Head Rings and Accessories 4, 5, 6, 7
 Head Ring Sector 7
 Head Ring Sector- HRIMS 7
 Head Ring Wrench 5
 Head Ring Wrench- HRW 5
 HRAIM 6
 HRAIM Adapter Plate 14
 HRAIM Adapter Plate- GEOBRWAK 14
 HRD 6
 HRDXS 6
 HREBA 7
 HRIMS 7

HRIMTS 7
 HRKTP 7
 HRP 6
 HRW 5

I

IF3000 17
 IFSW2 17
 ImageFusion Software- IF3000 17
 ImageFusion™ Software 17
 Imaging Localizers 8
 Instrument Drive System 15
 Intubation Head Ring Assembly 6
 Intubation Head Ring Assembly- HRAIM 6
 Intubation Head Ring Ear Bar Kit 7
 Intubation Head Ring Ear Bar Kit- HREBA 7

K

KDG 10
 Keller Depth Gauge- KDG 10

L

LL01 8
 LL02 8
 Luminant MR/ CT Localizer Frame- LL01 8
 Luminant™ MR/ CT Localizer Frame 8

M

Mayfield Adapters 10
 MAYFIELD® Adapters 10
 MedTec 9
 MedTec- CTCPM 9
 Med Tec Flat Couch Top 9
 Med Tec Flat Couch Top- CTVC 9

N

Nashold Biopsy Needle, Disposable (box of 5)- NBND5 13
 Nashold Biopsy Needle, Disposable 13
 Nashold Biopsy Needle, Disposable (Box of 5) 13
 Nashold Biopsy Needle, Disposable- NBND 13
 NBND 13
 NBND5 13
 NeuroSight Arc Software (Laptop)- ST1000 17
 NeuroSight® Arc Software 17
 NeuroSight® Arc Software (Laptop) 17

P

Phantom Base Hardware Kit 12
 Phantom Base Hardware Kit- CRWPBESHK 12
 Phantom Base System 12
 Phantom Base System- CRWPBS 12
 Philips 9

RADIONICS® CRW® STEREOTACTIC SYSTEM

Philips Aura 9
Philips Aura- CTCPAURA 9
Philips- CTCPP 9
Picker 1200SX 9
Picker 1200SX- CTCPP1 9
Picker PQ2000 9
Picker PQ2000/ PQ5001- CTCPP2 9
Picker PQ5001 9
PMDCASE 15
Post and Cross Bar Kit 5
Post and Cross Bar Kit- UCHRP 5
Probe Micro-Slide 15
Probe Micro—Slide 15
Probe Micro-Slide- CRWMS 15

Q

Quality Assurance Components 12

R

Radionic CRW Arc Hardware Kit- CRWHK 11
Radionics CRW Arc System Pointer- CRWASP 12, 14
Radionics CRW Lightweight Arc System- CRWASL 10
Radionics CRW
Arc Hardware Kit 11
Radionics CRW Arc 10
Radionics CRW Arc System Pointer 12
Radionics CRW
Lightweight Arc System 10
Radionics CRW Stereotactic Surgical Products 4, 5, 6, 7,
8, 9, 10, 11, 12, 13, 14, 15, 16, 17
Radionics™ CRW™ System Accessories and Components
10, 11
RB27 11, 16
RB32 11, 16
Reducing Bushings 11
Reducing Tubes 11
Reticles 12
RLPP 12
RLPPSP 12
RLPPVS 12
RT1176 11
RT1676 11
RT1876 11
RT2076 11
RT2176 11
RT11116 11
RT16116 11
RT18116 11
RT20116 11
RT20160 11
RT21116 11
RTNBND76 11
RTNBND116 11
RTNBND160 11

S

Salcman Drill Driver 16
Salcman Drill Driver- SDD 16
Salcman Drill Kit 16
Salcman Drill Kit- SDK 16
SCSWCD 17
SD20 16
SD27 16
SD32 16
SD46 16
SD63 16
SDD 16
SDK 16
SDKCASE 16
Shimadzu 9
Shimadzu- CTCPSH 9
Siemens 9
Siemens- CTCPS 9
Single Use Only Sterile Devices 13
SR 10
ST1000 17
Stainless Steel Ruler- SR 10
StereoCalc Software (CD-ROM)- SCSWCD 17
StereoCalc™ Software (CD-ROM) 17
Stereotactic Planning Software 17
Sterile Pointer 12
Sterile Pointer- for Phantom Base- RLPPSP 12
Storage and Sterilization Case 4
Storage and Sterilization Case- CRWCASE 10
Storage and Sterilization Case- UCHRCASE 4
SWTS 10

T

TAP 6
T Handle Screw 7
T Handle Screw- HRIMTS 7
Toshiba 9
Toshiba- CTCPTO 9
Training 18

U

UCHRA 4
UCHR Adapter Plate 14
UCHR Adapter Plate- GEOOUCHRAK 14
UCHRAP 4
UCHRCASE 4
UCHREBA 5
UCHRHK 5
UCHRP 5
Universal Comapct Head Ring- UCHRA 4
Universal Compact Head Ring 4
Universal Compact Head Ring Ear Bar Kit 5
Universal Compact Head Ring Ear Bar Kit- UCHREBA 5
Universal Compact Head Ring Hardware Kit 5

Universal Head Ring Hardware Kit- UCHRHK 5
User's Manuals 18

V

Vertical Slide Assembly 12
Vertical Slide Assembly- RLPPVS 12



OPERATE WITH CONFIDENCE™



Radionics®
Stereotaxy



MAYFIELD®
Stabilization



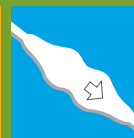
Auragen™
Brain Mapping



Ruggles™
Instruments



CUSA®
Tissue Ablation



OSV II®
CSF Management



DuraGen Plus®
Duraplasty



Camino®
NeuroCritical Care

Integra LifeSciences Corporation
311 Enterprise Drive • Plainsboro, NJ 08536
For more information or to place an order, please contact Customer Service:
USA and Canada: 800.997.4868 • (Outside USA) 609.936.5400 • (Fax) 888.980.7742
www.Integra-LS.com

USA and Canada
800-997-4868
609-936-5400 (Outside USA)
888-980-7742 (Fax)

England
+44 (0) 1264 345 700
+44 (0) 1264 332 113 (Fax)

France
+33 (0) 493 95 56 00
+33 (0) 493 95 56 60 (Fax)

Germany
0800 10 10 755
06995 775 477 (Fax)

Camino, CUSA, DuraGen Plus, Integra NeuroSciences, OSV II, NeuroSight, CRW, Luminant and Radionics are registered trademarks of Integra LifeSciences Corporation or its subsidiaries in the United States and/or other countries. Auragen, Operate with Confidence, Ruggles, Stereocalc, ImageFusion, AtlasPlan and the Integra wave logo are trademarks of Integra LifeSciences Corporation or its subsidiaries. MAYFIELD is a registered trademark of SM USA Inc. and is used by Integra LifeSciences Corporation under license.

©2010 Integra LifeSciences Corporation. All rights reserved. Printed in the USA 0K NS1757-04/10