

# NEUROMONITORING

## PRODUCT CATALOG



## **Caution:**

### **U.S. law restricts these devices to sale by or on the order of a physician.**

All text and diagrams contained in this catalog are intended as guidelines and are for illustrative purposes only. No information included in this catalog is intended to replace the Directions for Use packaged with each Integra product. Always refer to the appropriate Directions for Use for complete clinical instructions.

For technical and additional clinical information on Integra products, please contact your Integra NeuroSpecialist.

AccuDrain, Camino, LICOX, Ventrix, and Integra NeuroSciences are registered trademarks of Integra LifeSciences Corporation or its subsidiaries in the United States and/or other countries.

The Integra wave logo, Hermetic, Hermetic Plus, LimiTorr, MoniTorr ICP, Squeeze-Lok, TraumaCath, and Twist-Lock Drill Guard are trademarks of Integra LifeSciences Corporation or its subsidiaries.

Teflon is a registered trademark of E.I. DuPont.

Velcro is a registered trademark of Velcro Industries.

Veni-Gard is a registered trademark of ConMed Corporation.

Xylocaine is a registered trademark of APP Pharmaceuticals LLC.

DuraPrep is a registered trademark of 3M Corporation.

All other trademarks and trade names are the property of their respective owners.

<b>NEUROMONITORING.....</b>	<b>1</b>
<b>Ordering and Warranty Information .....</b>	<b>2-4</b>
Extended Service Agreement Program .....	3-4
<b>Camino® Monitors .....</b>	<b>5</b>
Camino® Advanced Monitor.....	5
<b>Camino® Pressure Monitoring Catheter Kits.....</b>	<b>6-11</b>
OLM Intracranial Pressure Monitoring Kit .....	6
Intracranial Pressure/Temperature Monitoring Kit.....	6
Complete Intracranial Pressure Monitoring and Cranial Access Kit .....	7
Post Craniotomy Subdural Pressure Monitoring Kit.....	8
Micro Ventricular Bolt Pressure Monitoring Kit .....	9
Micro Ventricular Bolt Pressure/Temperature Monitoring Kit.....	9
Complete Micro Ventricular Bolt Pressure Monitoring, Cranial Access, & Drainage Kit.....	10
Intracranial Pressure Monitoring Catheter Kit with Licox® Bolt Fitting.....	11
<b>Camino® Pressure Monitoring Accessories.....</b>	<b>12</b>
Hand Drill.....	12
Drill Bits .....	12
Bolt Adapter .....	12
<b>Neuromonitoring Accessories &amp; Cables .....</b>	<b>13</b>
Accessories and Cables for CAM01 or MPM1 .....	13
Accessories and Cables for SPM1 .....	13
<b>Cable Matrix for CAM01, MPM1, and SPM1 Monitors.....</b>	<b>14-15</b>
<b>Ventrix® ICP Monitoring Catheter Kits.....</b>	<b>16-17</b>
Parenchymal Bolt Pressure Monitoring Kit.....	16
Subdural Tunneling Pressure Monitoring Kit .....	16
Ventricular Tunneling Pressure Monitoring Kit.....	17
Complete Ventricular Tunneling and Drainage Kit.....	17
<b>Ventrix® Accessories and Cables .....</b>	<b>18-19</b>
Pole Clamp for Ventrix® ICP Monitor .....	18
Fiberoptic Receptacle.....	18
Catheter Cable Extension 2.5 M .....	19
Monitor Interface Cable .....	19
Ventrix® Inservice CD-ROM .....	19
<b>Cable Matrix for Licox® and Ventrix® Monitor.....</b>	<b>20</b>

# Table of Contents

<b>Licor® Brain Tissue Oxygen Monitoring System.....</b>	<b>21-24</b>
Licor® CMP Brain Tissue Oxygen and Temperature Monitor .....	21
Licor® PMO Combined Oxygen and Temperature Catheter .....	22
Complete PMO Single Lumen Bolted Kit.....	22
Complete PMO Double Lumen Bolted Kit .....	23
Complete PMO Tunneling Kit.....	23
Licor® Oxygen & Temperature Micro Probes .....	24
Complete IMC Probe Kit with Temperature Probe, Triple Lumen .....	24
Licor® Monitor Link with CMP Cable.....	24
<b>Licor® Accessories and Cables.....</b>	<b>25-26</b>
Licor® Accessories and Cables.....	25
Devices to Measure Intracranial Pressure with Licor® Oxygen Monitoring .....	26
<b>VENTRICULOSTOMY AND EXTERNAL CSF DRAINAGE.....</b>	<b>27</b>
<b>Ordering and Warranty Information.....</b>	<b>28-29</b>
<b>Cranial Access Kits.....</b>	<b>30-32</b>
Cranial Access Kit (with Prep Kit) .....	30
Cranial Access Kit (without Prep Solutions) .....	31
Additional Cranial Access Kits.....	32
<b>Cranial Access Accessories .....</b>	<b>33</b>
Hand Drill.....	33
Drill Bits .....	33
<b>Panel Mount External Drainage Systems.....</b>	<b>34-36</b>
AccuDrain® External CSF Drainage System.....	34
Replacement Collection Bags .....	34
AccuDrain® Laser Level.....	35
Line Level .....	35
Hermetic Plus™ External CSF Drainage System .....	36
Replacement Collection Bag .....	36
<b>Pole Mount External Drainage Systems.....</b>	<b>37-40</b>
LimiTorr™ Volume Limiting CSF Drainage System .....	37
LimiTorr™ Volume Limiting CSF Drainage System Replacement Drain Bag .....	37
External CSF Drainage and ICP Monitoring System .....	38
MoniTorr ICP™ External Drainage and Monitoring System.....	39
Integral Drainage Set (IDS).....	40
<b>Basic External Drainage Systems.....</b>	<b>41-44</b>

# Table of Contents

CSF Drainage System.....	41
MoniTor <sup>™</sup> ICP <sup>™</sup> External CSF Drainage System with Small Drip Chamber.....	41
MoniTor <sup>™</sup> ICP <sup>™</sup> External CSF Drainage System with Graduated Flap .....	42
MoniTor <sup>™</sup> ICP <sup>™</sup> External CSF Drainage Bag System.....	42
External Drainage Set (EDS) .....	43
External Ventricular Drainage Set (EVDS).....	43
Complete Drainage and ICP Monitoring Set .....	44
Lumbar Drainage Set (LDS) .....	44
<b>External Drainage Accessories .....</b>	<b>45–47</b>
LimiTor <sup>™</sup> Volume Limiting CSF Drainage System Replacement Drain Bag .....	45
Integra External CSF Drainage Replacement Bag .....	45
MoniTor <sup>™</sup> ICP <sup>™</sup> Replacement Drain Bag.....	46
Replacement Drainage Bags .....	47
Drainage Accessory Kit .....	47
<b>Pole Mount Assembly Systems .....</b>	<b>48–50</b>
Evolution Pole Mount .....	48
Replacement Laser .....	49
System Mounting Bracket.....	49
MoniTor <sup>™</sup> ICP <sup>™</sup> Pole Mount Assembly .....	50
<b>External Drainage Accessories .....</b>	<b>51</b>
Suturable Tubing Clamps.....	51
Luer Lock Connectors .....	51
Easy Stand .....	51
<b>Ventricular Drainage Catheters.....</b>	<b>52–56</b>
Hermetic <sup>™</sup> Ventricular Small Catheter Set .....	52
Hermetic <sup>™</sup> Large Style Ventricular Catheter Set.....	52
Hermetic <sup>™</sup> Ventricular Catheter Set .....	53
TraumaCath <sup>™</sup> Ventricular Catheter Set .....	53
Hermetic <sup>™</sup> Ventricular Small Catheter Set .....	54
Ventricular Catheter Accessory Kit (VCAK) .....	54
Straight Ventricular Drainage Catheter .....	55
Intraventricular Monitoring Catheter Set (IVMCS).....	55
Integral Ventricular Drainage Set (IVDS) .....	56
<b>Lumbar Drainage Catheters .....</b>	<b>57–59</b>
Hermetic <sup>™</sup> Lumbar Catheter Closed Tip .....	57
Hermetic <sup>™</sup> Lumbar Catheter Open Tip .....	57

# Table of Contents

Lumbar Catheter Set.....58

Integral Lumbar Drainage Set (ILDS) .....59

Lumbar Catheter Accessory Kit (LCAK) .....59

**Specialty Catheters ..... 60–62**

    ICP Monitoring Cup Catheters.....60

    Subdural Evacuation System.....61

    Suction Reservoir Kit .....61

    Convenience Kits .....62

**INDEX..... 63**

**Index-Alphabetical ..... 64–65**

**Index-Numerical ..... 66–67**



# Neuromonitoring



# Ordering and Warranty Information

## Pricing:

Prices stated in specific written quotations are firm for thirty days from the date given, and are otherwise subject to change without prior notice. Pricing terms stated on written agreements are governed by such agreements.

## Minimum Order Requirements:

Minimum order requirement is \$100 (a \$10 handling charge will be added to any order under \$100). For partial case orders, contact the Customer Service Department for quotation.

## Shipments:

F.O.B. Integra LifeSciences Corporation ("Integra") point of shipment within the continental United States. Shipping costs (including freight and insurance) shall be prepaid by Integra and invoiced to customers.

## Ordering Procedure:

A written purchase order on customer's form may be requested for purchases of Integra NeuroSciences products.

## Acceptance of Orders:

Orders are accepted upon approval by Integra in Plainsboro, New Jersey.

## Return Policy:

- Authorization, from customer service, must be obtained prior to returning product.
- Sterile product must be returned in unopened, undamaged cartons, packed to prevent damage.
- Non-sterile product must be returned in unused saleable condition in original package.
- Custom or special order products will not be accepted for credit.
- Credit will be issued for goods returned prior to ninety days from ship date with a 20% restocking charge. This assumes that the product returned is not damaged and can be verified to have not been used or opened.

## Customer Service Contact Information

311 Enterprise Drive  
Plainsboro, New Jersey 08536 USA

### USA and Canada

800-997-4868  
609-936-5400 (Outside the USA)  
888-980-7742 (Fax)

### England

+44 (0) 1264 345 700  
+44 (0) 1264 332 113 (Fax)

### France

+33 (0) 493 95 56 00  
+33 (0) 493 95 56 60 (Fax)

### Germany

0800 10 10 755  
06995 775 477 (Fax)

## Integra Standard Warranty

INTEGRA LIFESCIENCES CORPORATION ("INTEGRA") warrants to the original purchaser only that each new INTEGRA product is free from manufacturing defects in material and workmanship under normal use and service for a period of one (1) year (except as otherwise expressly provided as to accessory items) from the date of delivery by INTEGRA to the first purchaser, but in no event beyond the expiration date stated on any product labeling.

Surgical instruments are guaranteed to be free from defects in material and workmanship when maintained and cleaned properly and used normally for their intended purpose.

Any covered product that is placed by INTEGRA under a lease, rental, or installment purchase agreement and that requires repair service during the term of such placement agreement shall be repaired in accordance with the terms of such agreement.

If any covered defect occurs during the warranty period or term of such placement agreement, the purchaser should communicate directly with INTEGRA's home office. If purchaser seeks to invoke the terms of this warranty, the product must be returned to INTEGRA at its home office. The defective product should be returned promptly, properly packaged, and postage prepaid. Loss or damage in return shipment to INTEGRA shall be at CUSTOMER's risk. INTEGRA's sole responsibility under this warranty shall be repair or replacement, at INTEGRA's sole discretion at INTEGRA's expense, subject to the terms of this warranty and applicable agreements.



# Ordering and Warranty Information

IN NO EVENT SHALL INTEGRA BE LIABLE FOR ANY INCIDENTAL, INDIRECT, CONSEQUENTIAL OR PUNITIVE DAMAGES IN CONNECTION WITH THE ACQUISITION OR USE OF ANY INTEGRA PRODUCT. Further, this warranty shall not apply to, and INTEGRA shall not be responsible for, any loss arising in connection with the purchase or use of any INTEGRA product that has been repaired by anyone other than an authorized INTEGRA service representative or altered in any way so as, in INTEGRA's judgment, to affect its stability or reliability, or which has been subject to misuse, negligence or accident, or which has been used otherwise than in accordance with the instructions furnished by INTEGRA. THIS LIMITED WARRANTY IS EXCLUSIVE AND IN LIEU OF ALL OTHER WARRANTIES, EXPRESS OR IMPLIED, AND OF ALL OTHER OBLIGATIONS OR LIABILITIES ON INTEGRA'S PART, AND INTEGRA NEITHER ASSUMES NOR AUTHORIZES ANY REPRESENTATIVE OR OTHER PERSON TO ASSUME FOR IT ANY OTHER LIABILITY IN CONNECTION WITH INTEGRA'S PRODUCTS.

INTEGRA DISCLAIMS ALL OTHER WARRANTIES, EXPRESS OR IMPLIED INCLUDING, BUT NOT LIMITED TO, IMPLIED WARRANTIES OF MERCHANTABILITY AND FITNESS FOR A PARTICULAR PURPOSE, AND ANY IMPLIED WARRANTY ARISING FROM COURSE OF PERFORMANCE, COURSE OF DEALING, USAGE OR TRADE OR OTHERWISE, OR APPLICATION OR WARRANTY OF QUALITY AS WELL AS ANY EXPRESS OR IMPLIED WARRANTY TO PATIENTS. No warranty or guarantee may be created by any act or statement nor may this Standard Warranty be modified in any way, except as a result of a writing signed by an officer of INTEGRA. These limitations on the creation or modification of this warranty may not be waived or modified orally or by any conduct.

## Extended Service Agreement Protection Plan

INTEGRA LIFESCIENCES CORPORATION ("INTEGRA") offers a Comprehensive Extended Service Agreement Program on select Integra NeuroMonitoring Products.

### Products covered under the program benefit from:

- No Charge Annual Preventive Maintenance
- OEM Parts and Labor Included
- No Charge for Travel of Integra Field Service Representative or Shipping of Equipment
- Free Loaner during Service if Required
- Priority Repair at Service Center
- Priority On-Site Service if Required
- Technical Support Available 24/7

If Extended Service Agreement is entered into at time of product purchase, the one-year standard warranty is upgraded to include a no charge annual preventive maintenance and all repairs are included.

### Pricing:

Pricing stated in specific written quotations are firm for thirty days from the date given, and are otherwise subject to change without prior notice. Pricing terms on written agreements are governed by such agreements. Discounts are available for payment in advance.

### Ordering Procedure:

A written purchase order on customer's form may be requested in order to purchase INTEGRA products' extended service agreements. Contracts must be signed by Customer and INTEGRA representatives prior to coverage taking effect.

### Cancellation Policy:

The extended service agreements are non-cancellable upon receipt of Purchase Order, unless terminated due to a default in conditions or payment terms of Agreement.

### Acceptance of Contracts:

Signed contracts are effective upon receipt by INTEGRA in Plainsboro, NJ.

# Ordering and Warranty Information

## Products Covered under Extended Service Agreement Program:

### CAMINO® ADVANCED MONITOR

<b>CAM1SRVEA1</b>	One-year extended agreement
<b>CAM1SRVEA3X1</b>	Three-year extended agreement with advance payment
<b>CAM1SRVEA3X3</b>	Three-year extended agreement with annual payment

### CAMINO® MPM1

<b>MPM1SRVEA1</b>	One-year extended agreement
<b>MPM1SRVEA3X1</b>	Three-year extended agreement with advance payment
<b>MPM1SRVEA3X3</b>	Three-year extended agreement with annual payment

### LICOX®

<b>LCX1SRVEA1</b>	One-year extended agreement
<b>LCX1SRVEA3X1</b>	Three-year extended agreement with advance payment
<b>LCX1SRVEA3X3</b>	Three-year extended agreement with annual payment

For further details on the Extended Service Agreement Program, please contact your Integra NeuroSpecialist.

## Camino® Advanced Monitor

Catalog No. CAM01

The Camino® Advanced Monitor combines the familiarity of the Multi-Parameter Monitor with improved user functionality. The CAM01 offers a broad range of functions to support parenchymal and ventricular monitoring. The CAM01 provides an accurate measurement of Intracranial Pressure (ICP) via Integra's proven fiberoptic technology. CAM01 also measures Intracranial Temperature (ICT) and Cerebral Perfusion Pressure (CPP).

- **Larger, Easy to Read Display.** The CAM01 color display delivers an ICP waveform and digital CPP, ICP and ICT readouts.
- **Trend Analysis.** The CAM01 provides continuous recording and display of ICP and CPP values over the most recent 12 or 24 hour period.
- **Compact and Portable Design.** The CAM01 provides an ergonomic carrying handle to increase portability. The CAM01 is also easily attached to a bedrail or mounted to an IV pole and connected to the hospital bedside monitoring systems for added functionality. A built-in rechargeable battery permits monitoring during transport.
- **High ICP and Low CPP Alarms** detect a rise in intracranial pressure or a decrease in cerebral perfusion pressure outside of user selected limits in order to facilitate early recognition and intervention.
- **RS232 and ICP Analog Output** connectors enable hard copy data for research, education and analysis.



# Camino® Pressure Monitoring Catheter Kits

## OLM Intracranial Pressure Monitoring Kit

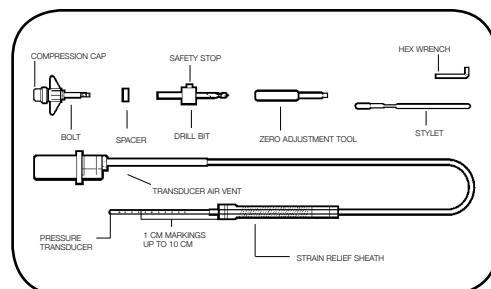
Catalog No. 1104B

Model 1104B is used to directly monitor ICP by inserting the transducer-tipped catheter through the Camino® bolt. Depth markings guide placement in the parenchyma or subarachnoid space.

### The kit includes:

- 4 Fr transducer-tipped catheter
- Camino® bolt with compression cap and turning wings
- 2.7 mm twist drill bit with adjustable safety stop
- Stylet
- Protective strain relief sheath

Sterile, packaged 10 per case or individually



## Intracranial Pressure/Temperature Monitoring Kit

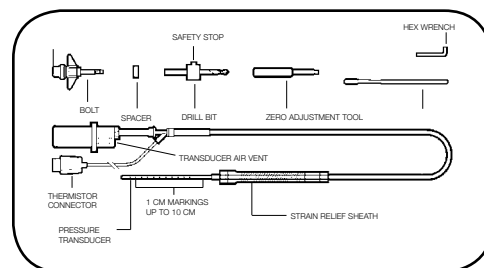
Catalog No. 1104BT

The fiberoptic transducer-tipped pressure/temperature catheter, used in conjunction with the CAM01, provides simultaneous intracranial pressure (ICP) and core brain temperature (ICT) measurement. Model 1104BT is used to directly measure pressure and temperature by inserting the transducer-tipped catheter through the Camino® bolt. Depth markings guide placement in the parenchyma.

### The kit includes:

- 4 Fr transducer-tipped catheter
- Camino® bolt with compression cap and turning wings
- 2.7 mm twist drill bit with adjustable safety stop
- Stylet
- Protective strain relief sheath

Sterile, packaged 10 per case or individually



# Camino® Pressure Monitoring Catheter Kits

## Complete Intracranial Pressure Monitoring and Cranial Access Kit

**Catalog No.** 1104BC

Model 1104BC (includes Model 1104B and Cranial Access Kit) is used to directly monitor ICP by inserting the transducer-tipped catheter through the Camino® bolt. Depth markings guide placement in the parenchyma or subarachnoid space.

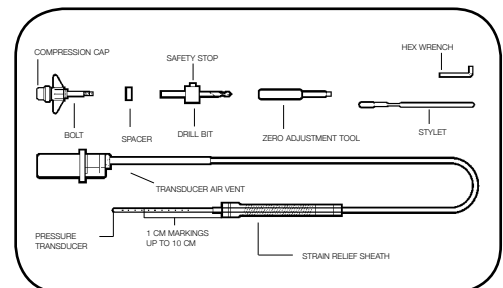
### The kit includes:

- 4 Fr transducer-tipped catheter
- Camino® bolt with compression cap and turning wings
- 2.7 mm twist drill bit with adjustable safety stop
- Stylet
- Protective strain relief sheath

**Sterile, packaged 5 per case or individually**

### The cranial access kit includes:

Qty.	Description
1	Disposable razor
3	PVP swabs
2	12 cc syringes
1	18 G x 1 1/2" needle
1	25 G x 5/8" needle
1	18 G x 3 1/2" spinal needle
1	1% Xylocaine® with epinephrine (30 cc ampule)
1	Purple marker
1	15" x 15" fenestrated drape with barrier
3	18" x 26" white absorbent towels
10	4" x 4" gauze sponges
1	PVP solution (30 ml packet)
1	Hand drill
1	#11 scalpel with handle
1	#15 scalpel with handle
1	Flexible ruler
1	Adson forceps, serrated
1	Adson forceps, 1 x 2 teeth
1	Needle holder
2	2 oz medicine cups
1	Self-retaining scalp retractor
1	Scissors



## Post Craniotomy Subdural Pressure Monitoring Kit

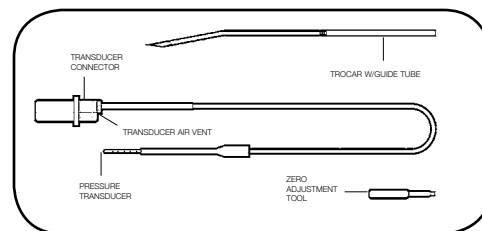
**Catalog No.** 1104G

Model 1104G is used to measure intracranial pressure within the subdural space. The catheter is tunneled toward the insertion site using the trocar with guide tube provided with the kit.

**The kit includes:**

- 4 Fr transducer-tipped catheter
- 3.17 mm trocar with guide tube

**Sterile, packaged 10 per case or individually**



# Camino® Pressure Monitoring Catheter Kits

## Micro Ventricular Bolt Pressure Monitoring Kit

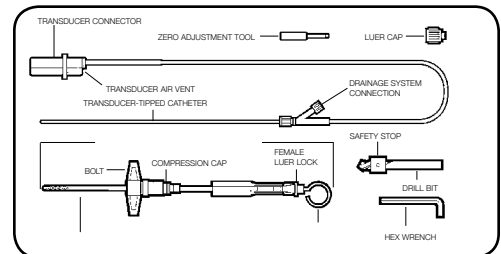
**Catalog No.** 1104HM

Model 1104HM is used to monitor ICP and provides access to the cerebral ventricles for CSF sampling, drainage and fluid injection. A ventricular catheter with a transducer at its tip is secured to the skull by a bolt which permits simultaneous monitoring and drainage.

**The kit includes:**

- 4 Fr transducer-tipped catheter
- 12 Fr Camino® ventricular access device with bolt
- 5.3 mm twist drill bit with adjustable safety stop

**Sterile, packaged 10 per case or individually**



## Micro Ventricular Bolt Pressure/Temperature Monitoring Kit

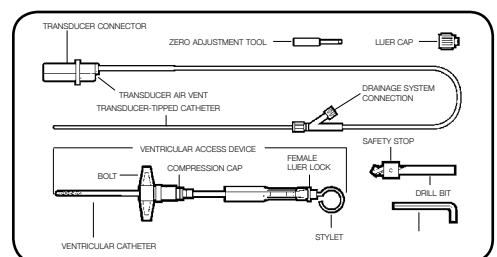
**Catalog No.** 1104HMT

Model 1104HMT is used to monitor intracranial pressure temperature and provides access to the cerebral ventricles for CSF sampling, drainage and fluid injection. A special ventricular access device is secured to the skull by a bolt and permits monitoring and drainage.

**The kit includes:**

- 4 Fr transducer-tipped catheter with thermistor
- 12 Fr Camino® ventricular access device with bolt
- 5.3 mm twist drill bit with adjustable safety stop
- Thermistor connector cover

**Sterile, packaged 10 per case or individually**





# Camino® Pressure Monitoring Catheter Kits

## Complete Micro Ventricular Bolt Pressure Monitoring, Cranial Access, and Drainage Kit

Catalog No. 1104HMC

Model 1104HMC (includes Model 110HM, Model NL850500V Ventricular Drainage System and Cranial Access Kit) is used to monitor ICP and provides access to the cerebral ventricles for CSF sampling, drainage and fluid injection. A ventricular access device is secured to the skull by a bolt which permits simultaneous monitoring and drainage.

### The kit includes:

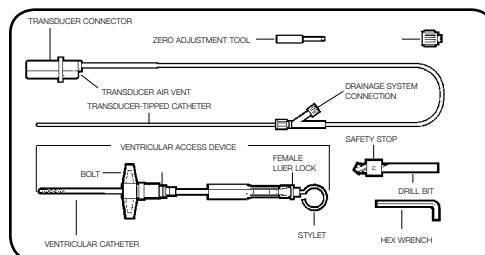
- 4 Fr transducer-tipped catheter
- 12 Fr Camino® ventricular access device with bolt
- Stylet
- 5.3 mm twist drill bit with adjustable safety stop
- Cranial Access Kit
- Ventricular Drainage System

**Sterile, packaged 5 per case or individually**

**Ventricular Drainage System** components facilitate ventricular drainage, fluid injection, CSF sampling and ICP monitoring when used in conjunction with Camino® Ventricular Bolt Pressure Monitoring Kit.

### The cranial access kit includes:

Qty.	Description
1	Disposable razor
3	PVP swabs
2	12 cc syringes
1	18 G x 1 1/2" needle
1	25 G x 5/8" needle
1	18 G x 3 1/2" spinal needle
1	1% Xylocaine® with epinephrine (30 cc ampule)
1	Purple marker
1	15" x 15" fenestrated drape with barrier
3	18" x 26" white absorbent towels
10	4" x 4" gauze sponges
1	PVP solution (30 ml packet)
1	Hand drill
1	#11 scalpel with handle
1	#15 scalpel with handle
1	Flexible ruler
1	Adson forceps, serrated
1	Adson forceps, 1 x 2 teeth
1	Needle holder
2	2 oz medicine cups
1	Self-retaining scalp retractor
1	Scissors



## Intracranial Pressure Monitoring Catheter Kit with Licox® Bolt Fitting

**Catalog No.** 1104L

---

Model 1104L is used to measure intracranial pressure through a Licox® Bolt.

**The kit includes:**

- 4 Fr transducer-tipped catheter with Licox® Bolt fitting

**Sterile, packaged 10 per case or individually**



## Hand Drill

Catalog No.                   INS030

Hand drill (bit not included) intended for single-use in neurosurgical procedures.

Sterile, packaged individually



## Drill Bits

Catalog No.	Description
300733	Single drill bit with collar, 3/16" (4.7 mm)
SP0075	Single drill bit with collar, 5/32" (3.97 mm)
SP0087	Single drill bit with collar, 13/64" (5.31 mm)
SP0088	Single drill bit with collar, 1/4" (6.35 mm)

**Note:** When using the Camino® or Ventrix® Monitoring Kits, use the drill bit provided with that kit.

Sterile, packaged individually



300733



SP0075    SP0087    SP0088

## Bolt Adapter

Catalog No.                   045M

The 045M Bolt Adapter includes accessories to adapt the Model 1104HM Micro Ventricular Pressure Monitoring Kit for placement in the parenchyma.

Sterile, packaged individually



## Accessories and Cables for CAM01 or MPM1

Catalog No.	Description
MPM1TM	Technical Manual (For monitor MPM1)
MPM1CDROM	CD-ROM Inservice Video
PAC1	Pre-Amp Transducer Cable (Pre-amp cable for MPM1)
PMIOMPM	Interface Cable (Patient monitor interface cable for monitor CAM01 or MPM1. Connects CAM01 or MPM1 to bedside patient monitor used with ICP, AP and ICT adapter cables.)
MPM1SDC	
ICPXX	Monitor Adapter Cable (Intracranial pressure, CAM01 or MPM1 to bedside monitor. Refer to Cable Matrix on pages 14-15)
APXX	Monitor Adapter Cable (Arterial pressure, MPM1 to bedside monitor. Refer to Cable Matrix on pages 14-15)
ICTXX	Monitor Adapter Cable (Intracranial temperature, CAM01 or MPM1 to bedside. Connects monitor to catheter monitor. Refer to Cable Matrix on pages 14-15)

## Accessories and Cables for SPM1

Catalog No.	Description
PMIOSPM	Patient Monitor Interface Cable (For monitor SPM1)
PAC2	Pre-Amp Transducer Cable (For monitor SPM1, Connects monitor to catheter)
ICPXX	Monitor Adapter Cable

**Note:** Use chart on pages 14-15 to find the appropriate Adapter Cables for each specific Bedside Monitor.

# Neuromonitoring Accessories and Cables

## Cable Matrix for CAM01, MPM1, and SPM1 Monitors

Manufacturer	Model	IBP Module	ICP#	ICT#	AP#
Abbott	PR-Series		ICP-20		
Advanced Medical System	IM-76		ICP-26		
Agilent (see Philips/HP)					
Air Shields (Narco)	AS-100, AS-441	141	ICP-22		
American Optical/Picker	1131		ICP-35		
Beckman	98xx Series		ICP-21		
Burdick	M500 Series, M200 60/565/575 Mainframe	M544, PA-106	ICP-22		
Care	5000C		ICP-25		
Cobe	CPC-043-650-000		ICP-38		
Corometrics	111, 112, 504, 515A		ICP-23		
Corometrics	115, 116, 118, 151, 556 Fetal (Nicolay)		ICP-56		
Criticare	Vital Sign 1100		ICP-80	Direct connection	
Critikon	Dinamap 87xx, 3000	NPS	ICP-80	Direct connection	
Datascope	870, 2xxx, Passport		ICP-46	Direct connection	
Datascope	Point of View	In addition to ICP-46, will need Datascope adapter 0012-00-0866	ICP-46		
Datex (Datex-Ohmeda)	AS/x, CS/x	M Series (ie M-ESTP)	ICP-22	Direct connection	AP-05
Datex (Datex-Ohmeda)	Cardiacap, CC, CM		ICP-22	Direct connection	AP-05
Drager (Siemens see below)	Delta (Hemopod, Hemomed)	Hemopod may require Siemens part #3368383E530U	ICP16	Direct Connection using adapter Siemens part #5198333E530U	AP-07
Drager	Vitalert 2000		ICP-80		
E for M	IM, OM, VR	PM2B, M2100, M2200	ICP-35		
Fukuda-Denshi (12-pin)	Dynascope Series		ICP-55	Direct connection	
Fukuda-Denshi (8-pin)	DS-800 to DS-1100		ICP-24		
General Electric (Marquette)	PDS-3000, A-3500		ICP-31		
General Electric (Marquette)	3100 Series		ICP-46		
General Electric (Marquette)	Tram I & II Tram 7000	Includes Tram 250SL TramRac 4, 450SL	ICP-17		AP-01
General Electric (Marquette)	Solar 8000, TramRac4A	TRAM 100-850 A & SL	ICP-60	ICT-01	AP-06
General Electric (Marquette)	Solar 8000, TramRac4A	451 & 851	ICP-60	ICT-01	AP-08
General Electric (Marquette)	Dash 3000, 4000	451N	ICP-60	ICT-01	AP-08
Gould	IM1000, IM1014, IM1024 SM7084, 1076-1		ICP-25		
Gould	13-4615-50		ICP-53		
Grass	7P1, 7P122		ICP-46		
Invivo Research Labs	Ohmeda 1400 Series Omni-Trak		ICP-80		
Ivy Bio-Med	700, 400 Series		ICP-80		
Kontron	Supermon, Minimon, K2000, 4000, 72xx		ICP-40		AP-04
Kontron (Roche)	2106, 7320, 7324		ICP-46		
Litton (Hellige)	SMU Series		ICP-51		
Litton (Hellige, Datamedix)	SMK, SMS, SMV		ICP-26		
Medical Data Electronics (MDE)	Escort, MPM Series		ICP-80	Direct connection	

# Neuromonitoring Accessories and Cables

## Cable Matrix for CAM01, MPM1, and SPM1 Monitors

Manufacturer	Model	IBP Module	ICP#	ICT#	AP#
Medical Data Electronics (MDE)	Escort, MPM Series with HP connector		ICP-39	Direct connection	
Mennon Medical	Horizon, Envoy		ICP-80	Direct Connection	
NEC SAN-EI	1257		ICP-63		
Nihon Kohden	HP & Lifescope Series		ICP-33	Direct connection	
	BSM-8000 Series				
Nihon Kohden	BSM-4100 Series	In addition to ICP-33, will need N.K. adapter JP-910P	ICP-33	Will need N.K. adapter JT-900P	
Nihon Kohden	BSM-5000 Series	In addition to ICP-33, will need N.K. adapter JP-910P	ICP-33	Direct Connection	
Nippon Colin	BP408		ICP-46		
Philips Intellivue			ICP-39	ICT-39	AP-39
Philips MMS (transport)	M3001A		ICP-81		
(Philips) Hewlett Packard (HP)	78201, 78901, 78905	78205A/B (Twinax)	ICP-14	Direct connection	AP-39
(Philips) Hewlett Packard (HP)	7835x, 83xxx		ICP-39	ICT-39	
(Philips) Hewlett Packard (HP)	7853x Monitor Terminal		ICP-39	ICT-39	AP-39
(Philips) Hewlett Packard (HP)	Merlin Series, Viridia	M1006A	ICP-39	ICT-39	AP-39
(Philips) Hewlett Packard (HP)	Merlin Series, Viridia	M1006B	ICP-39	ICT-39	Direct connection
(Philips) Hewlett Packard (HP)	Agilent		ICP-39		
Physio Control	VSM Series		ICP-34	Not compatible	
Pioneer (American Optical)	1131B		ICP-35		
PPG (Honeywell)	SMU 600 Series		ICP-51		
PPG Biomedical (Honeywell)	Midas Series		ICP-27		
Protocol (Welch Allyn)	Propaq Series		ICP-80		
Puritan-Bennett	PB 240, PB 245		ICP-22		
Richard Weiss	NeuroMonitor		ICP-42		
Roche (Kontron)	108, 127, 128, 222, 224-1		ICP-46		
Sandborn (same as HP)			ICP-39		
Siemens	6000, 7000, 8000, 9000 Series (Hemopod and Hemomed)	Hemopod may require Siemens part #3368383E530U	ICP-16	Direct Connection using adapter Siemens part #5198333E530U	AP-07
Siemens	Sirecust 400, 630, 700 Series, 960, 961 1241, 1280, 1281		ICP-16	Direct connection	AP-16
Siemens	300 Series (Rare)		ICP-36		
Siemens	Mingograph 7 (Rare)		ICP-37		
Simonsen & Weil (S & W)	System 8000		ICP-22		
SMEC	1300M		ICP-46		
Spacelabs	700, 900, Alpha Series		ICP-18		
Spacelabs	400, 500, 600, 90000 Series, Alpha-PC	Command Module adapts with Spacelabs part # 700-0028-00	ICP-19	Direct connection - Command Module adapts with Spacelabs part # 700-0031-00	Depends on module version - Direct connection or adapts with AP-19
Tektronix	400 Series		ICP-80		
Vickers (also see Air Shields)	Athena		ICP-22		
Vitatek	500 Series		ICP-80		

# Ventrix® ICP Monitoring Catheter Kits

## Parenchymal Bolt Pressure Monitoring Kit

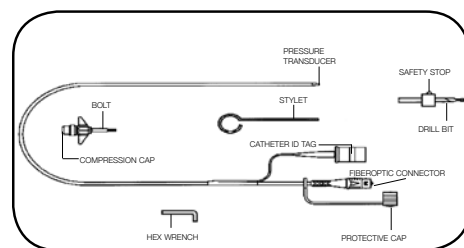
Catalog No. **NL950P**

Model NL950P is used to directly measure ICP by inserting the transducer-tipped 4/5 Fr flexible catheter through the bolt. Depth markings guide placement in the parenchyma or subarachnoid space.

**The kit includes:**

- 4/5 Fr transducer-tipped flexible catheter
- Bolt with compression cap and turning wings
- Spacer to adjust bolt depth
- Stylet
- 3.2 mm drill bit with adjustable safety stop

**Sterile, packaged 10 per case or individually**



## Subdural Tunneling Pressure Monitoring Kit

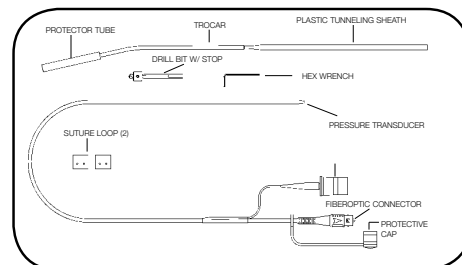
Catalog No. **NL950SD**

Model NL950SD is used to monitor the ICP in the subdural spaces or parenchymal placement using a tunneled placement technique.

**The kit includes:**

- 4/5 Fr transducer-tipped flexible catheter
- 3.17 mm trocar with tunneling sheath
- Suture loops
- 5.3 mm drill bit with adjustable safety stop

**Sterile, packaged 10 per case or individually**





## Ventricular Tunneling Pressure Monitoring Kit

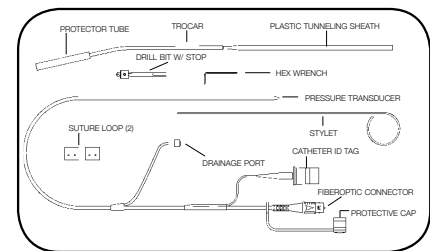
**Catalog No.** NL950V

Model NL950V is a transducer-tipped 9/10 Fr catheter for continuous ICP monitoring and CSF drainage. Access is achieved through a tunneled technique using the included trocar.

**The kit includes:**

- 9/10 Fr transducer-tipped catheter
- 3.17 mm trocar with tunneling sheath
- 0.7 mm catheter introducer stylet
- Suture loops
- 7 mm drill bit with adjustable safety stop

**Sterile, packaged 10 per case or individually**



## Complete Ventricular Tunneling & Drainage Kit

**Catalog No.** NL950VC

Model NL950VC (includes model NL950V and NL850500V Ventricular Drainage System) is a transducer-tipped 9/10 Fr catheter for continuous ICP monitoring and CSF drainage. Access is achieved through a tunneled technique using the included trocar.

**The kit includes:**

- 9/10 Fr transducer-tipped catheter
- 3.17 mm trocar with tunneling sheath
- 0.7 mm catheter introducer stylet
- Suture loops
- 7 mm drill bit with adjustable safety stop
- Ventricular Drainage System

**Sterile, packaged 5 per case or individually**

**Ventricular drainage components** facilitate ventricular drainage, fluid injection, CSF sampling and ICP monitoring when used in conjunction with Ventrix® Ventricular Pressure Monitoring Kit.



# Ventrix® Accessories and Cables

## Accessories and Cables for Use with Ventrix® ICP Monitor

\* Ventrix® Monitor no longer available



## Pole Clamp for Ventrix® ICP Monitor

**Catalog No.** NL950PC

Mounts Ventrix® Monitor to pole with diameter from 1/2" to 1-1/2"



## Fiberoptic Receptacle

**Catalog No.** NL950FR

This connector couples the fiberoptic branch of the catheter to the catheter extension cable. Replacement is recommended every three months due to normal wear and contamination.

**Package of (3) three**



## Catheter Cable Extension 2.5 M

**Catalog No.** **NL950EC2**

---

Used with the Ventrix® Monitor, NL950100.  
Connects Ventrix® Monitor to catheter.



## Monitor Interface Cable

**Catalog No.** **NL950MCXX**

---

Refer to Cable Matrix on page 20.  
Connects Ventrix® Monitor to bedside patient monitor.



## Ventrix® Inservice CDROM

Catalog No.	Description
<b>VENTRIXCDROM</b>	Ventrix® Inservice CDROM

## Cable Matrix for Licox® and Ventrix® Monitors

Manufacturer	Model	IBP Module	Licox Adapter
Advanced Medical System	IM-76		NL950MC14
Air Shields (Narco)	AS-100, AS-441	141	NL950MC12
American Optical/Picker	1131		NL950MC05
Burdick	M500 Series, M200 560/565/575 Mainframe	M544, PA-106	NL950MC12
Corometrics	115, 116, 118, 151, 556 Fetal (Nicolay)		NL950MC17
Criticare	Vital Sign 1100		NL950MC04
Critikon	Dinamap 87xx 3000 Plus 3000	NSP	NL950MC04
Datamedix (Litton)	PR-5/18/18A ST-214/419/521 Guardian		NL950MC18
Datascope	870, 2xxx, Passport		NL950MC02
Datex (Datex-Ohmeda)	AS/x, CS/x	May not be compatible with Mseries Modules	NL950MC12
Datex (Datex-Ohmeda)	Cardiicap, CC, CM		NL950MC12
Drager	Vitalert 2000		NL950MC04
Drager (Siemens)	Delta (Hemopod)	Not compatible with Hemopod	NL950MC06
E for M	IM, OM, VR		NL950MC05
Fukuda-Denshi	(8-pin) DS-800 to DS-1100		NL950MC19
General Electric	3100 Series		NL950MC02
Grass	7P1, 7P122		NL950MC02
Hewlett Packard	78201, 78901, 78905		NL950MC07
Hewlett Packard	7835x, 83xxx		NL950MC01
Hewlett Packard	7853x Monitor Terminal		NL950MC01
Hewlett Packard	Merlin Series	M1006A/B	NL950MC01
Invivo Research Labs	Ohmeda 1400 Series Omni-Trak		NL950MC04
Ivy Bio-Med	701		NL950MC04
Kontron	Supermon, Minimon K2000, 4000, 72xx		NL950MC13
Litton (Hellige)	SMU Series		NL950MC16
Litton (Hellige, Datamedix)	SMK, SMS, SMV		NL950MC14
Marquette	Tram I & II Tram 7000	Not compatible with TRAM 7000	NL950MC03
Marquette	Tramscope (100 thru 800 Series) and Solar 8000		NL950MC15
Medical Data Electronics	Escort, MPM Series		NL950MC04
Mennon	Horizon 2000		NL950MC04
Nihon Kohden	HP & Lifescope Series BSM-8000 Series		NL950MC09
Nippon Colin	BP408		NL950MC02
Philips	IntelliVue		NL950MC01
Physio Control	VSM Series		NL950MC11
PPG (Honeywell)	SMU Series		NL950MC16
Puritan-Bennett	PB 240, PB 245		NL950MC12
Roche (Kontron)	108, 127, 128, 222, 224-1		NL950MC02
Sandborn (same as Hewlett Packard)			NL950MC01
Siemens	6000, 7000, 8000,9000 Series (Hemopod and Hemomed)	Not compatible with Hemopod	NL950MC06
Siemens	Sirecust 400, 630,700 Series 960, 961, 1241, 1280, 1281		NL950MC06
Simonsen & Weil (S & W)	System 8000		NL950MC12
SMEC	1300M		NL950MC02
Spacelabs	700, 900, Alpha Series		NL950MC10
Spacelabs	400, 500, 600, 90000 Series Alpha-PC	Command Module adapts with 700-0028-00	NL950MC04
Tektronix	400 Series		NL950MC04
Vickers (also see Air Shields)	Athena		NL950MC12
Vitatek	500 Series		NL950MC04

# Licor<sup>®</sup> Brain Tissue Oxygen Monitoring System

## Licor<sup>®</sup> CMP Brain Tissue Oxygen and Temperature Monitor

Catalog No. AC31

---

**Included with monitor:**

Catalog No.	Description
A10	Power Supply
BC10PA	PbtO <sub>2</sub> Cable (blue)
BC10TA	Temperature cable (green)
BC10PV	PbtO <sub>2</sub> Extension Cable (autoclavable)
BC10TV	Temperature Extension Cable (autoclavable)
BC10R	Test Set
BC10S	Test probe, electrical safety
PMOCAB	Cable (Cable connecting catheter to "Y" cable)
BC10PMO	Monitor Cable ("Y" cable to oxygen and temperature connections on Licor <sup>®</sup> monitor)

---



Oxygen Partial Pressure Monitor with digital display. Displays Oxygen Partial Pressure and Temperature. Connects to bedside monitor with use of LML1 Licor<sup>®</sup> Monitor Link (sold separately).

# Licox® Brain Tissue Oxygen Monitoring System

## Licox® PMO Combined Oxygen and Temperature Catheter

PMO Catheter combining both oxygen and temperature monitoring

- Oxygen and temperature monitoring combined in one catheter. Simplifies procedure and less operative time required.
- Larger sampling area for higher accuracy, 18 mm vs. 13 mm.
- Choice of introduction: single lumen bolt (oxygen/temperature), double lumen bolt (oxygen/temperature and ICP) or tunneling.



## Complete PMO Single Lumen Bolted Kit

**Catalog No.** IP1P

Contains complete Licox® PMO Kit with IP1, single lumen bolt and CC1P1, combined oxygen and temperature catheter. Probe must be stored between 2° and 10° C.

**Supplied sterile**



## Complete PMO Double Lumen Bolted Kit

**Catalog No.** IP2P

---

Contains complete Licor<sup>®</sup> PMO Kit with IP2, double lumen bolt and CC1P1, combined oxygen and temperature catheter. Probe must be stored between 2° and 10° C.

- Can be used with Camino<sup>®</sup> Catheter 1104L or Ventrix<sup>®</sup> Catheter NL950SD for monitoring ICP

**Supplied sterile**



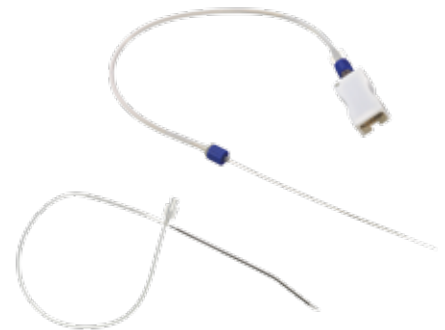
## Complete PMO Tunneling Kit

**Catalog No.** IT2

---

Contains complete Licor<sup>®</sup> PMO Kit with VK52, tunneling needle and CC1P1, combined oxygen and temperature catheter. Probe must be stored between 2° and 10° C.

**Supplied sterile**





# Licox® Brain Tissue Oxygen Monitoring System

## Licox® Oxygen and Temperature Micro Probes\*

### Oxygen Micro Probe

Oxygen sensitive area of 13 mm<sup>2</sup>, diameter 0.8 mm, length 150 mm, pre-calibrated, smart card included. Catheter is enclosed in a humid chamber that must be removed before use. Oxygen Probe must be stored between 2° and 10°C.



### Temperature Micro Probe

Type K Thermocouple, diameter 0.8 mm.

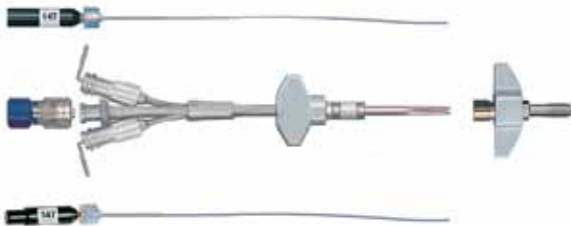
\* Available as part of the IM3ST Kit

## Complete IMC Probe Kit with Temperature Probe, Triple Lumen

Catalog No. IM3ST

Contains CC1SB Oxygen Probe, C8.B Temperature Probe and Triple Lumen Bolt. Oxygen probe must be stored between 2° and 10° C.

Supplied sterile



## Licox® Monitor Link with CMP Cable

Catalog No. LML1

Includes:

Catalog No.	Description
D1	Licox® Monitor Link
D11	Cable



Required to attach Licox® CMP monitor to bedside monitor

## Licox® Accessories and Cables

Catalog No.	Description
<b>A10US</b>	Main power supply for Licox® Monitor
<b>D1</b>	Licox® Monitor Link (D11 cable required: Attaches Licox® Monitor to bedside monitor)
<b>D11</b>	Licox® Monitor Link analog cable (To connect D1 to Licox® Monitor)
<b>NL950MCXX</b>	Interface cable (Connects LML1 to bedside monitor, Refer to Licox® and Ventrix® Cable Matrix on page 20)
<b>BC10R</b>	Test probe
<b>BC10S</b>	Test probe for electrical safety check
<b>C8B</b>	Temperature Micro Probe, Type K Thermocouple (supplied sterile)

### Licox Cables for Triple Lumen Kit (IM3ST)

<b>BC10PA</b>	Monitor cable (Attaches oxygen probe to Licox® Monitor)
<b>BC10TA</b>	Monitor cable (Attaches temperature probe to Licox® Monitor)
<b>BC10PV</b>	Monitor extension cable (Oxygen, autoclavable)
<b>BC10TV</b>	Monitor extension cable (Temperature, autoclavable)

### Licox Cables for PMO Double Lumen (IP2P), Single Lumen (IPIP), and Tunneling (IT2) Kits

<b>PMOCAB</b>	Cable (Cable connecting catheter to “Y” cable)
<b>BC10PMO</b>	Monitor cable (“Y” cable to oxygen and temperature connections on Licox® monitor)

<b>BC10</b>	<i>Licox accessory kit includes:</i> A10US, BC10PA, BC10TA, BC10PV, BC10TV, BC10R, BC10S
-------------	---

## Devices to Measure Intracranial Pressure with Licox® Oxygen Monitoring

### Catalog No.

### Description

**1104L**

Camino® Intracranial Pressure Monitoring Kit  
(Use with Camino® Monitors CAM01, MPM1, SPM1)



---

**NL950SD**

Ventrix® Subdural Tunneling Pressure Monitoring Kit  
(Use with Ventrix® monitor NL950100)





# Ventriculostomy and External CSF Drainage

# Ordering and Warranty Information

## Pricing:

Prices stated in specific written quotations are firm for thirty days from the date given, and are otherwise subject to change without prior notice. Pricing terms stated on written agreements are governed by such agreements.

## Minimum Order Requirements:

Minimum order requirement is \$100 (a \$10 handling charge will be added to any order under \$100). For partial case orders, contact the Customer Service Department for quotation.

## Shipments:

F.O.B. Integra LifeSciences ("Integra") point of shipment within the continental United States. Shipping costs (including freight and insurance) shall be prepaid by Integra and invoiced to customers.

## Ordering Procedure:

A written purchase order on customer's form may be requested for purchases of Integra NeuroSciences products.

## Acceptance of Orders:

Orders are accepted upon approval by Integra in Plainsboro, New Jersey.

## Return Policy:

- Authorization, from customer service, must be obtained prior to returning product.
- Sterile product must be returned in unopened, undamaged cartons, packed to prevent damage.
- Non-sterile product must be returned in unused saleable condition in original package.
- Custom or special order products will not be accepted for credit.
- Credit will be issued for goods returned prior to ninety days from ship date with a 20% restocking charge. This assumes that the product returned is not damaged and can be verified to have not been used or opened.

## Customer Service Contact Information

311 Enterprise Drive  
Plainsboro, New Jersey 08536 USA

### USA and Canada

800-997-4868  
609-936-5400 (Outside the USA)  
888-980-7742 (Fax)

### England

+44 (0) 1264 345 700  
+44 (0) 1264 332 113 (Fax)

### France

+33 (0) 493 95 56 00  
+33 (0) 493 95 56 60 (Fax)

### Germany

0800 10 10 755  
06995 775 477 (Fax)

## Integra Standard Warranty

INTEGRA LIFESCIENCES CORPORATION ("INTEGRA") warrants to the original purchaser only that each new INTEGRA product is free from manufacturing defects in material and workmanship under normal use and service for a period of one (1) year (except as otherwise expressly provided as to accessory items) from the date of delivery by INTEGRA to the first purchaser, but in no event beyond the expiration date stated on any product labeling.

Surgical instruments are guaranteed to be free from defects in material and workmanship when maintained and cleaned properly and used normally for their intended purpose.

Any covered product that is placed by INTEGRA under a lease, rental, or installment purchase agreement and that requires repair service during the term of such placement agreement shall be repaired in accordance with the terms of such agreement.

If any covered defect occurs during the warranty period or term of such placement agreement, the purchaser should communicate directly with INTEGRA's home office. If purchaser seeks to invoke the terms of this warranty, the product must be returned to INTEGRA at its home office. The defective product should be returned promptly, properly packaged, and postage prepaid. Loss or damage in return shipment to INTEGRA shall be at CUSTOMER's risk. INTEGRA's sole responsibility under this warranty shall be repair or replacement, at INTEGRA's sole discretion at INTEGRA's expense, subject to the terms of this warranty and applicable agreements.

# Ordering and Warranty Information

IN NO EVENT SHALL INTEGRA BE LIABLE FOR ANY INCIDENTAL, INDIRECT, CONSEQUENTIAL OR PUNITIVE DAMAGES IN CONNECTION WITH THE ACQUISITION OR USE OF ANY INTEGRA PRODUCT. Further, this warranty shall not apply to, and INTEGRA shall not be responsible for, any loss arising in connection with the purchase or use of any INTEGRA product that has been repaired by anyone other than an authorized INTEGRA service representative or altered in any way so as, in INTEGRA's judgment, to affect its stability or reliability, or which has been subject to misuse, negligence or accident, or which has been used otherwise than in accordance with the instructions furnished by INTEGRA. THIS LIMITED WARRANTY IS EXCLUSIVE AND IN LIEU OF ALL OTHER WARRANTIES, EXPRESS OR IMPLIED, AND OF ALL OTHER OBLIGATIONS OR LIABILITIES ON INTEGRA'S PART, AND INTEGRA NEITHER ASSUMES NOR AUTHORIZES ANY REPRESENTATIVE OR OTHER PERSON TO ASSUME FOR IT ANY OTHER LIABILITY IN CONNECTION WITH INTEGRA'S PRODUCTS.

INTEGRA DISCLAIMS ALL OTHER WARRANTIES, EXPRESS OR IMPLIED INCLUDING, BUT NOT LIMITED TO, IMPLIED WARRANTIES OF MERCHANTABILITY AND FITNESS FOR A PARTICULAR PURPOSE, AND ANY IMPLIED WARRANTY ARISING FROM COURSE OF PERFORMANCE, COURSE OF DEALING, USAGE OR TRADE OR OTHERWISE, OR APPLICATION OR WARRANTY OF QUALITY AS WELL AS ANY EXPRESS OR IMPLIED WARRANTY TO PATIENTS. No warranty or guarantee may be created by any act or statement nor may this Standard Warranty be modified in any way, except as a result of a writing signed by an officer of INTEGRA. These limitations on the creation or modification of this warranty may not be waived or modified orally or by any conduct.

# Cranial Access Kits

## Cranial Access Kit (with Prep Kit)

**Catalog No.**                    **INSHITH**

---

The Cranial Access Kit with Prep Kit and 5.31 mm bit is a convenient, pre-packaged, sterile set containing all necessary components for burr-hole entry into the cranium.

**Sterile, packaged 5 per case or individually**

---

### The kit includes:

Qty.	Description
1	Disposable razor
3	Betadine swabs
2	12 cc safety syringes
2	18 G x 1-1/2" needles
1	25 G x 5/8" needle
1	18 G x 3-1/2" spinal needle
1	12 G x 5-1/2" ventricular needle
1	1% Xylocaine® with epinephrine
1	Marker
1	15" x 15" Fenestrated drape with barrier
3	18" x 26" white absorbent towels
10	4" x 4" gauze sponges
1	Povidone-Iodine solution
1	Hand drill
1	#11 scalpel with handle
1	#15 scalpel with handle
1	Flexible ruler
1	Adson forceps, serrated
1	Adson forceps, 1 x 2 teeth
1	Mosquito forceps, curved
1	Needle holder
2	2 oz medicine cups
1	Self-retaining retractor
1	Scissors
1	5.31 mm drill bit assembly
1	Hex wrench
2	Culture tubes, screw cap

---



### Prep Kit Contains:

- Disposable razor
- 6 ml Duraprep® solution (sterile)
- 10 ml .9% sodium chloride (2) solution (solution sterile)
- 3-0 nylon suture (2)



## Cranial Access Kit (without Prep Solutions)

**Catalog No.**                    **INS5HND**

The Cranial Access Kit is a convenient pre-packaged sterile set containing all necessary components for burr-hole entry into the cranium. This kit does not include prep solutions.

**Sterile, packaged 5 per case or individually**

### The kit includes:

Qty.	Description
1	Disposable razor
2	12 cc safety syringes
2	18 G x 1-1/2" needles
1	25 G x 5/8" needle
1	18 G x 3-1/2" spinal needle
1	12 G x 5-1/2" ventricular needle
1	Marker
1	15" x 15" Fenestrated drape with barrier
3	18" x 26" white absorbent towels
10	4" x 4" gauze sponges
1	Hand drill
1	#11 scalpel with handle
1	#15 scalpel with handle
1	Flexible ruler
1	Adson forceps, serrated
1	Adson forceps, 1 x 2 teeth
1	Needle holder
2	2 oz medicine cups
1	Self-retaining retractor
1	Scissors
1	5.31 mm drill bit assembly
1	Hex wrench
1	3-0 nylon suture (packaged outside kit)





# Cranial Access Kits

## Additional Cranial Access Kits

Catalog No.	Description
<b>INS7250</b>	Cranial access kit with multiple drill bits and guard sizes $\frac{5}{32}$ " (3.97 mm), $\frac{13}{64}$ " (5.31 mm), $\frac{1}{4}$ " (6.35 mm)
<b>INS7260</b>	Cranial access kit with multiple drill bits and guard sizes $\frac{5}{32}$ " (3.97 mm), $\frac{1}{4}$ " (6.35 mm)
<b>INS7270</b>	Cranial access kit with drill bit and guard size $\frac{1}{4}$ " (6.35 mm)
<b>INS7280</b>	Cranial access kit with drill bit and guard size $\frac{13}{64}$ " (5.31 mm)

The Cranial Access Kits with Multiple Drill Bit sizes are convenient, pre-packaged, sterile sets containing all necessary components for burr-hole entry into the cranium. Each kit is differentiated by its drill bit size.



### Catalog No. **INS7040**

Cranial Access Kit with Twist-Lock Drill Guard™ and  $\frac{1}{4}$ " (6.35 mm) drill bit.  
The Twist-Lock Drill Guard™ allows for accurate, secure adjustment of cranial drill depth.

#### All kits include:

Qty.	Description
2	Disposable Razors
1	5 cc Syringe
1	18 G x 1-1/2" needle
1	23 G x 1" needle
1	1% Xylocaine®, 5 cc ampule
1	Skin marker
1	Fenestrated drape (clear)
2	Towels
2	Fenestrated 4x4 sponges
20	Gauze 4x4
3	Gauze 2x2
2	Povidone-Iodine swabs
1	Povidone-Iodine solution
3	Povidone-Iodine ointment
1	Hand drill
1	#11 scalpel with handle
1	#15 scalpel with handle
1	Ruler
1	Adson forceps
1	Mosquito forceps
1	Needle holder
1	Self-retaining retractor
1	Scissors
1	Hex wrench
1	3-0 nylon suture (packaged outside kit)
3	Culture tubes



**Sterile, packaged individually**

## Hand Drill

**Catalog No.****INS030****Description**

Hand drill (bit not included) intended for single use in neurosurgical procedures

Sterile, packaged individually



## Drill Bits

**Catalog No.****300733****SP0075****SP0087****SP0088****Description**

Single sterile drill bit with collar 3/16" (4.7 mm)

Single sterile drill bit with collar 5/32" (3.97 mm)

Single sterile drill bit with collar 13/16" (5.31 mm)

Single sterile drill bit with collar 1/4" (6.35 mm)

**Note:** When using the Camino® or Ventrix® Monitoring Kits, use the drill bit provided with that kit.

Sterile, packaged individually

**300733****SP0075****SP0087****SP0088**

# Panel Mount External Drainage Systems



## Catalog No.

**INS8400**

**INS8401**

## Description

AccuDrain® System without anti-reflux valve in the patient line

AccuDrain® System with anti-reflux valve in the patient line

Each AccuDrain® External CSF Drainage Management System contains green-striped pressure tubing on patient line, needleless sampling sites marked with yellow labels for easy identification, anti-microbial hydrophobic filter, dual IV pole straps with cord, Squeeze-Lok™ tabs for easy and secure burette adjustment and a line level.

**\*MRI Safe**



## Replacement Collection Bags

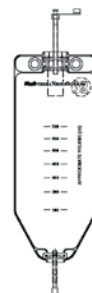
## Catalog No.

**INS8700**

## Description

700 ml replacement drainage bag with anti-reflux valve and sampling site. Buttons on bag allow for ease of assembly and disassembly. Female luer lock tubing fitting. For use with the following products:

INS8400, INS8401, INS8301, INS8302, INS8600, INS8601,  
NL8508300N, NL8508600, NL8508601



**Sterile, 5 units per box**

**\*MRI Safe**

\*The device when used in an MRI (Magnetic Resonance Imaging) environment has demonstrated to present no additional risk to the patient or the other users. Tested in a Static Magnetic Field Strength: 1.5 Tesla, Maximum Special Gradient: 1G/cm (shielded magnet), and a Maximum RF Transmitter Power: 2KW@64MHz. MRI safe is defined by the CDRH Magnetic Resonance Working Group (Feb. 7, 1997) draft document A Primer on Medical Device Interactions with MRI Systems as "The device, when used in the MRI environment, has been demonstrated to present no additional risk to the patient or individuals, but may affect the quality of the diagnostic information".

# Panel Mount External Drainage Systems

## AccuDrain® Laser Level

Catalog No.           INS8902

---

Reusable Laser Level provides a simple way to precisely level the AccuDrain® System. Connects to the back of the AccuDrain® System. Must be removed prior to MRI.

**Non-Sterile, packaged individually**

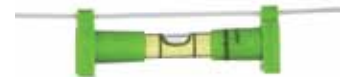


## Line Level

Catalog No.  
INS8901

### Description

Line level contained with AccuDrain® External Drainage CSF drainage system. May be ordered separately from the AccuDrain® System.



**Non-Sterile, packaged individually**

**\*MRI Safe**

\*The device when used in an MRI (Magnetic Resonance Imaging) environment has demonstrated to present no additional risk to the patient or the other users. Tested in a Static Magnetic Field Strength: 1.5 Tesla, Maximum Special Gradient: 1G/cm (shielded magnet), and a Maximum RF Transmitter Power: 2KW@64MHz. MRI safe is defined by the CDRH Magnetic Resonance Working Group (Feb. 7, 1997) draft document A Primer on Medical Device Interactions with MRI Systems as "The device, when used in the MRI environment, has been demonstrated to present no additional risk to the patient or individuals, but may affect the quality of the diagnostic information".

# Panel Mount External Drainage Systems

## Hermetic Plus™ External CSF Drainage System

### Catalog No.

**INS8301**

**INS8302**

### Description

Includes the anti-reflux valve and patient line tubing

Without anti-reflux valve and patient line tubing

The External CSF Drainage System with green-striped tubing, is designed to secure directly to the IV pole with Velcro® straps and large suspension cord locking mechanism. The system includes green-striped pressure monitoring tubing, needleless sites, anti-microbial hydrophobic vent, red pressure level indicator at zero reference on panel mount stopcock and a removable 700 ml drainage bag.

**Sterile, packaged individually**

**\*MRI Safe**



## Replacement Collection Bags

### Catalog No.

**INS8700**

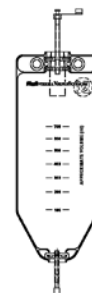
### Description

700 ml replacement drainage bag with anti-reflux valve and sampling site. Buttons on bag allow for ease of assembly and disassembly. Female luer lock tubing fitting. For use with the following products:

INS8301, INS8302, INS8400, INS8401, INS8600, INS8601,  
NL8508300N, NL8508600, NL8508601

**Sterile, 5 units per box**

**\*MRI Safe**



\*The device when used in an MRI (Magnetic Resonance Imaging) environment has demonstrated to present no additional risk to the patient or the other users. Tested in a Static Magnetic Field Strength: 1.5 Tesla, Maximum Special Gradient: 1G/cm (shielded magnet), and a Maximum RF Transmitter Power: 2KW@64MHz. MRI safe is defined by the CDRH Magnetic Resonance Working Group (Feb. 7, 1997) draft document A Primer on Medical Device Interactions with MRI Systems as "The device, when used in the MRI environment, has been demonstrated to present no additional risk to the patient or individuals, but may affect the quality of the diagnostic information".

# Pole Mount External Drainage Systems

## LimiTorr™ Volume Limiting CSF Drainage System

### Catalog No.

INS9020

### Description

LimiTorr Volume Limiting CSF Drainage System with 20 ml burette

INS9030

LimiTorr Volume Limiting CSF Drainage System with 30 ml burette

The LimiTorr™ Volume Limiting CSF Drainage System, with **unique volume limiting burette technology**, halts CSF drainage if predetermined level is reached and helps prevent overdrainage. LimiTorr™ also has an anti-microbial hydrophobic bi-layer vent and removable 500 ml drainage bag. Green-striped pressure tubing on the patient line is completely sealed and has needleless sampling sites marked with yellow labels for easy identification as well as a mounted transducer bracket.

- 20 ml or 30 ml shut-off volumes available
- **INS-400 Evolution Pole Mount** is the only recommended pole mount for LimiTorr™ to provide simple, sturdy alignment with the patient

**Sterile, packaged individually**

**\*MRI Safe, Latex Free**



## LimiTorr™ Volume Limiting CSF Drainage System Replacement Drain Bag

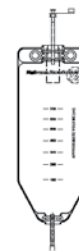
### Catalog No.

INS2101

500 ml replacement drainage bag with anti-reflux valve, attached blue cap, and drain tube for the LimiTorr™ INS9020 and INS9030 Volume Limiting CSF Drainage Systems.

**Sterile, packaged individually**

**\*MRI Safe, Latex Free**



\*The system meets ASTM F 2503-5, Standard Practice for Marking Medical Devices and other items for Safety in the Magnetic Resonance Environment, for designation of MR safe from determination provided by a scientifically based rationale. MR Safe is defined by the CDRH Magnetic Resonance Working Group (Feb. 7, 1997) draft document, A Primer on Medical Device Interactions with MRI Systems, as "The device, when used in the MRI environment, has been demonstrated to present no additional risk to the patient or other individuals, but may affect the quality of the diagnostic information". Data on file at Integra NeuroSciences.

# Pole Mount External Drainage Systems

## External CSF Drainage and ICP Monitoring System

**Catalog No.**  
**INS8600**

### Description

The External CSF Drainage System, with blue-striped, non-pressure tubing, is designed to be used with or without a pole mount assembly. The system includes: needleless sampling site, 50 ml graduated burette, proximal transducer port, anti-microbial hydrophobic vent, bonded in-line anti-reflux valve, paper scale and removable 700 ml drainage bag.

---

**Sterile, packaged individually**



## External CSF Drainage and ICP Monitoring System

**Catalog No.**  
**INS8601**

### Description

The External CSF Drainage System, with green-striped pressure tubing, is designed to be used with or without a pole mount assembly. The system includes: needleless sampling site, 50 ml graduated burette, distal transducer port, anti-microbial hydrophobic vent, removable anti-reflux valve, paper scale and removable 700 ml drainage bag.

---

**Sterile, packaged individually**





# Pole Mount External Drainage Systems

## MoniTorr ICP™ External CSF Drainage and Monitoring System

**Catalog No.**  
**INS1100**

### Description

The External CSF Drainage System with green-striped tubing, is designed to be used with a pole mount assembly. The system includes: needleless sampling sites, 100 ml graduated burette with large bore outlet designed to resist clogging, anti-microbial hydrophobic bi-layer vent and removable 500 ml drainage bag.

---

**Sterile, packaged individually**



## MoniTorr ICP™ External CSF Drainage and Monitoring System

**Catalog No.**

**10110**

**10100**

**10102**

**10110A**

**10110D**

### Description

MoniTorr ICP™ External CSF Drainage and Monitoring System

MoniTorr ICP™ External CSF Drainage and Monitoring System with patient line anti-reflux valve.

MoniTorr ICP™ External CSF Drainage and Monitoring System with patient line anti-reflux valve. No anti-reflux valve in bag.

MoniTorr ICP™ External CSF Drainage and Monitoring System without panel mount stopcock.

MoniTorr ICP™ External CSF Drainage and Monitoring System with 203 cm soft tubing.

---

The MoniTorr ICP™ External CSF Drainage System is a closed system. This system is used with a pole mount bracket assembly for simple, accurate patient alignment. The patient line is completely sealed. This system has a VentGuard™ feature which inhibits contamination of the microbial barrier filter. Collection bag has an anti-reflux valve.

**Sterile, packaged individually**





# Pole Mount External Drainage Systems

## Integral Drainage Set (IDS)

### Catalog No.

**910410**

**910410B**

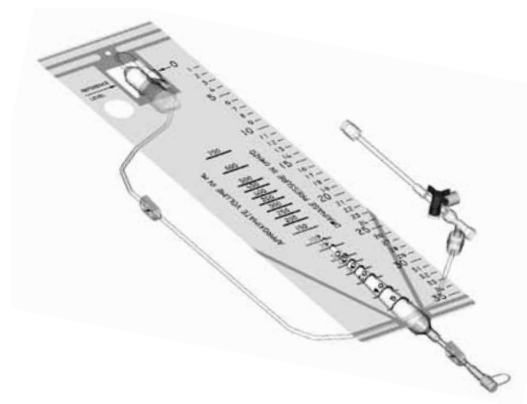
### Description

Standard EDS

IDS with stopcock protection boxes (2)

One-piece 200 cm patient line assembly with anti-reflux valve/drip chamber and 700 ml drainage vented bag. Removable extension tube with 3-way stopcock, sampling port, 2 clamps and suspension string with adjustable clip.

**Sterile, 6 units per box**



## CSF Drainage System

### Catalog No.

**NL850500V**

### Description

CSF Drainage System with latex free sampling site and luer connector.

**NL8508501**

CSF Drainage System with needleless sampling site

**NL8508502**

CSF Drainage System with burette sampling and needleless sampling site

These Drainage Systems provide components that facilitate CSF drainage, fluid injection, and CSF sampling. They are also supplied with Camino® and Ventrix® Ventricular Pressure Monitoring Kits.

**NL850500V: Sterile, packaged 10 per case or individually**

**NL8508501, NL8508502: Sterile, packaged individually**



## MoniTorr ICP™ External CSF Drainage System with Small Drip Chamber

### Catalog No.

**10130**

The MoniTorr ICP™ External CSF Drainage System contains a small drip chamber. This is a basic bag and line system in which the patient line has a rotating luer fitting at the end with a stopcock and a port for the transducer.

**Sterile, packaged individually**



# Basic External Drainage Systems

## MoniTorr ICP™ External CSF Drainage System with Graduated Flap

**Catalog No.** 10140

---

The MoniTorr ICP™ External CSF Drainage System includes a vinyl strip attached to the side of the system which is calibrated in cm H<sub>2</sub>O. It is designed to hang from an IV pole.

**Sterile, packaged individually**



## MoniTorr ICP™ External CSF Drainage Bag System

**Catalog No.** 10150

---

MoniTorr ICP™ External CSF Drainage System is designed to be used with Integra lumbar catheters.

**Sterile, packaged individually**

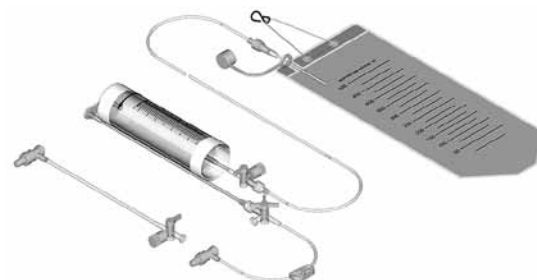


## External Drainage Set (EDS)

Catalog No.	Description
910110A	Standard EDS
910110N	Needle-free EDS

The External Drainage Set contains 150 cm patient line with 3-way stopcock, anti-reflux valve and sampling port, 75 ml graduated cylinder, sampling port and drainage tube, T-connectors/stopcock assembly, extension line, 500 ml drainage bag and ruler.

**Sterile, 6 units per box**  
**Latex Free**

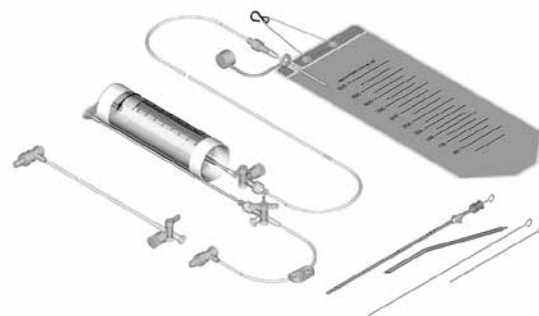


## External Ventricular Drainage Set (EVDS)

Catalog No.	Description
910112A	Standard EDS
910112N	Needle-free EDS

The External Ventricular Drainage Set contains ventricular catheter with length dots and large drainage holes (35 cm, 8 Fr), 20 cm and 35 cm introducing rods, luer lock connector and watertight cap, suturable tubing clamp (8 Fr) and subcutaneous passer.

**Sterile, 6 units per box**  
**Latex Free**



# Basic External Drainage Systems

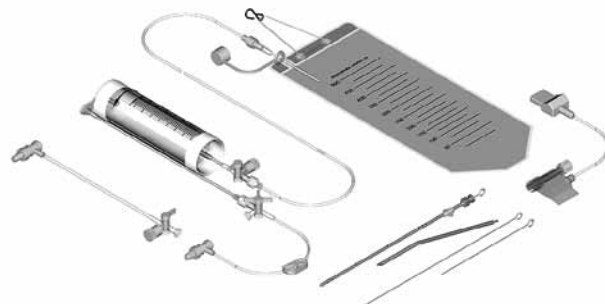
## Complete Drainage and ICP Monitoring Set

**Catalog No.** 910123A

The Standard EDS contains ventricular catheter with length dots and large drainage holes (35 cm, 8 Fr), 20 cm and 35 cm introducing rods, luer lock connector and watertight cap, suturable tubing clamp (8 Fr), subcutaneous passer and disposable pressure transducer.

**Sterile, 1 unit per box**

**Latex Free**



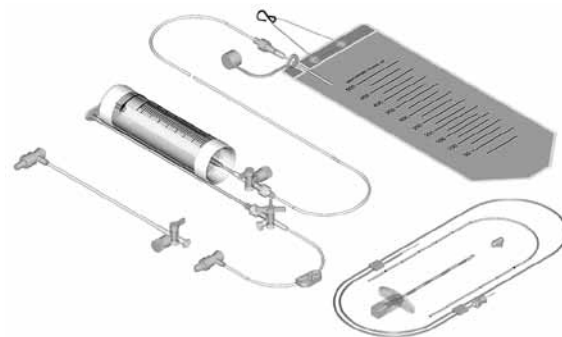
## Lumbar Drainage Set (LDS)

Catalog No.	Description
910120A	Standard EDS
910120N	Needle-free EDS

The Lumbar Drainage Set contains closed tip lumbar catheter with depth markers (80 cm, 5 Fr), guidewire in dispenser, 14 G Tuohy needle, luer lock connector and suturable tubing clamp (5 Fr).

**Sterile, 1 unit per box**

**Latex Free**



## LimiTorr™ Volume Limiting CSF Drainage System Replacement Drain Bag

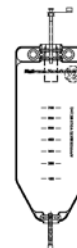
**Catalog No.**                      **INS2101**

---

500 ml replacement drainage bag with anti-reflux valve, attached blue cap, and drain tube for the LimiTorr™ INS9020 and INS9030 Volume Limiting CSF Drainage Systems.

**Sterile, packaged individually**

**\*MRI Safe, Latex Free**



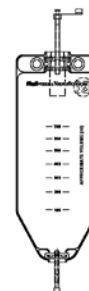
## Integra External CSF Drainage Replacement Bag

**Catalog No.**  
**INS8700**

**Description**

700 ml replacement drainage bag with anti-reflux valve and sampling site. Buttons on bag allow for ease of assembly and disassembly. Female luer lock tubing fitting. For use with the following products:

INS8301, INS8302, INS8400, INS8401, INS8600, INS8601,  
NL8508300N, NL8508600, NL8508601



**Sterile, 5 units per box**

**\*MRI Safe**

\*The device when used in an MRI (Magnetic Resonance Imaging) environment has demonstrated to present no additional risk to the patient or the other users. Tested in a Static Magnetic Field Strength: 1.5 Tesla, Maximum Special Gradient: 1G/cm (shielded magnet), and a Maximum RF Transmitter Power: 2KW@64MHz. MRI safe is defined by the CDRH Magnetic Resonance Working Group (Feb. 7, 1997) draft document A Primer on Medical Device Interactions with MRI Systems as "The device, when used in the MRI environment, has been demonstrated to present no additional risk to the patient or individuals, but may affect the quality of the diagnostic information".

# External Drainage Accessories

## MoniTorr ICP™ Replacement Drain Bag

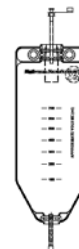
Catalog No. 10210

---

500 ml replacement drainage bag with anti-reflux valve and drain tube for the 10110 MoniTorr ICP™ External CSF Drainage and Monitoring System.

Sterile, packaged individually

\*MRI Safe, Latex Free



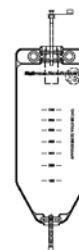
## MoniTorr ICP™ Replacement Drain Bag

Catalog No. 10212

---

Sterile, packaged 5 per Case

\*MRI Safe, Latex Free



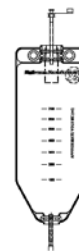
## MoniTorr ICP™ Replacement Drain Bag

Catalog No. INS2100

---

500 ml replacement drainage bag without anti-reflux valve and drain tube for the INS1100 MoniTorr ICP™ External CSF Drainage and Monitoring System.

Sterile, packaged individually



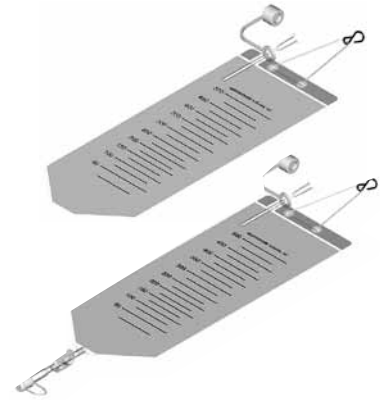
\*The device when used in an MRI (Magnetic Resonance Imaging) environment has demonstrated to present no additional risk to the patient or the other users. Tested in a Static Magnetic Field Strength: 1.5 Tesla, Maximum Special Gradient: 1G/cm (shielded magnet), and a Maximum RF Transmitter Power: 2KW@64MHz. MRI safe is defined by the CDRH Magnetic Resonance Working Group (Feb. 7, 1997) draft document A Primer on Medical Device Interactions with MRI Systems as "The device, when used in the MRI environment, has been demonstrated to present no additional risk to the patient or individuals, but may affect the quality of the diagnostic information".

## Replacement Drainage Bags

Catalog No.	Description
910116A	500 ml closed drainage bag
910116D	500 ml drainage collection bag

For use with Catalog Numbers: 910110A/N, 910112A/N, 910120A/N and 910123A.

**Sterile, 6 units per box**

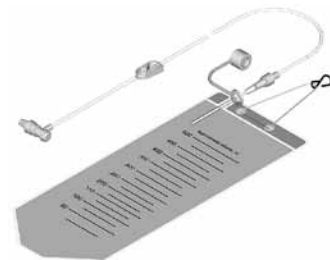


## Drainage Accessory Kit

Catalog No.	910122
-------------	--------

500 ml closed drainage bag with 150 cm patient line for intraoperative drainage of CSF.

**Sterile, 5 units per box**



\*The device when used in an MRI (Magnetic Resonance Imaging) environment has demonstrated to present no additional risk to the patient or the other users. Tested in a Static Magnetic Field Strength: 1.5 Tesla, Maximum Special Gradient: 1G/cm (shielded magnet), and a Maximum RF Transmitter Power: 2KW@64MHz. MRI safe is defined by the CDRH Magnetic Resonance Working Group (Feb. 7, 1997) draft document A Primer on Medical Device Interactions with MRI Systems as "The device, when used in the MRI environment, has been demonstrated to present no additional risk to the patient or individuals, but may affect the quality of the diagnostic information".



# Pole Mount Assembly Systems

## Evolution Pole Mount

### Catalog No.

**INS301**

**INS400**

**INS400CM**

**INS400MM**

**INS405**

**INS400L**

**INS8901**

### Description

Pole Mount Sliding Bracket

Pole Mount Assembly with cmH<sub>2</sub>O and mmHg Rail

Pole Mount Assembly with only cmH<sub>2</sub>O Rail

Pole Mount Assembly with only mmHg Rail

Pole Mount Assembly with cmH<sub>2</sub>O and mmHg Rail and INS301

Laser Level with Bracket

Line Level

The Evolution Pole Mount assembly bracket with laser level provides support and alignment for the External CSF Drainage and Monitoring Systems. The pole mount assembly assists in zero leveling and setting the pressure level for the CSF drainage and ICP management. Evolution's secure and dependable design includes captured components.



## Replacement Laser

**Catalog No.**  
**INS400L**

**Description**

Laser Level with Bracket. Intended for use with the Evolution Pole Mount (INS400 and INS405).

---

Packaged individually



## System Mounting Bracket

**Catalog No.**      **INS301**

---

For pole mount assembly when using INS8600 and INS8601.

Packaged individually  
Latex Free



# Pole Mount Assembly Systems

## MoniTorr ICP™ Pole Mount Assembly

Catalog No.	Description
INS300	MoniTorr ICP™ Pole Mount Assembly with Extendable Antenna
INS300L	MoniTorr ICP™ Pole Mount Assembly with Laser Level
INS301	Pole Mount Sliding Bracket
INS305	MoniTorr ICP™ Pole Mount Assembly with INS301
INS310	MoniTorr ICP™ Pole Mount Assembly with Extended Negative Scale

The MoniTorr ICP™ Pole Mount Assembly system provides support and alignment for the External CSF Drainage and Monitoring Systems. The pole mount assembly features measurements in both cm H2O and mm Hg scales and assistance in zero leveling and setting the pressure level for the CSF drainage and ICP management.

Packaged individually  
Latex Free

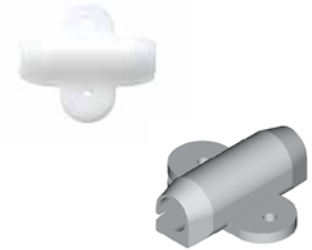


## Suturable Tubing Clamps

Catalog No.	Description
999005	For use with 5 Fr catheters
999007	For use with 8 Fr catheters

Radiopaque silicone elastometer

Sterile, 5 units per box



## Luer Lock Connectors

Catalog No.	Description
910128	Non-sterile, 36 units per box
999108	Sterile, 5 units per box

Polycarbonate luer lock connectors OD: 2.0 mm;  
ID: 1.4 mm for use with 8 Fr catheters.

Catalog No.	999105
-------------	--------

Polycarbonate luer lock connectors OD: 1.2 mm; ID: 0.7 mm for use with 5 Fr  
and 7 Fr catheters

Sterile, 5 units per box



## Easy Stand

Catalog No.	Description
910150	Easy stand
910153	Easy stand clamp

Sturdy aluminum pressure scale with cylinder holder and pressure transducer  
inset with swivelling, telescopic pointer. For use with External Drainage Sets  
910110A/N, 910112A/N, 910120A/N and 910123A. Bed or IV pole clamp (sold  
separately).



# Ventricular Drainage Catheters

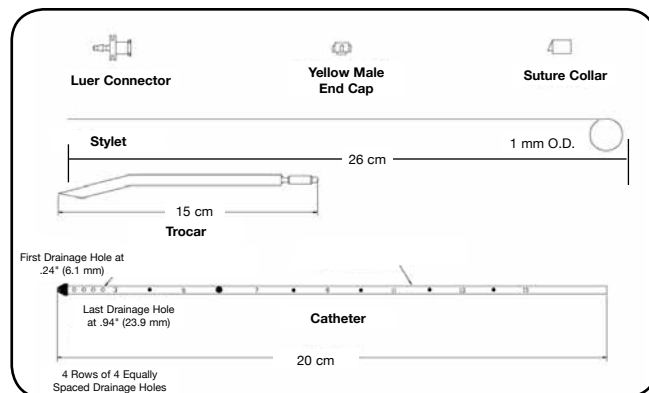
## Hermetic™ Ventricular Small Catheter Set

Catalog No. **INS4000**

### Each catheter set contains:

- One (1) 20 cm ventricular catheter OD: 2.5 mm x ID: 1.3 mm
- One (1) 26 cm stainless steel stylet
- One (1) luer connector
- One (1) suture collar
- One (1) 15 cm 10 Fr trocar
- One (1) yellow male end cap

**Sterile, packaged individually**  
**Latex Free**



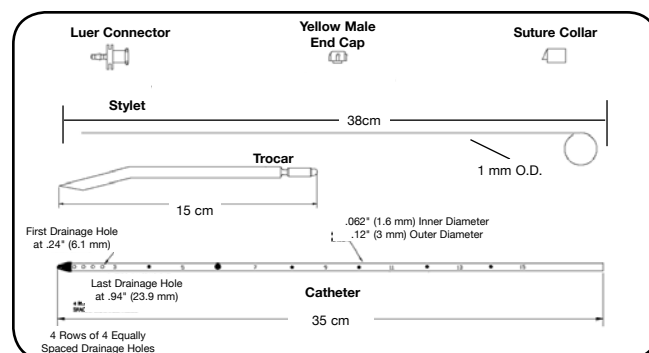
## Hermetic™ Large Style Ventricular Catheter Set

Catalog No. **INS4500**

### Each catheter set contains:

- One (1) 35 cm ventricular catheter OD: 3.0 mm x ID: 1.6 mm
- One (1) 38 cm stainless steel stylet
- One (1) luer connector
- One (1) suture collar
- One (1) 15 cm 10 Fr trocar
- One (1) yellow male end cap

**Sterile, packaged individually**  
**Latex Free**



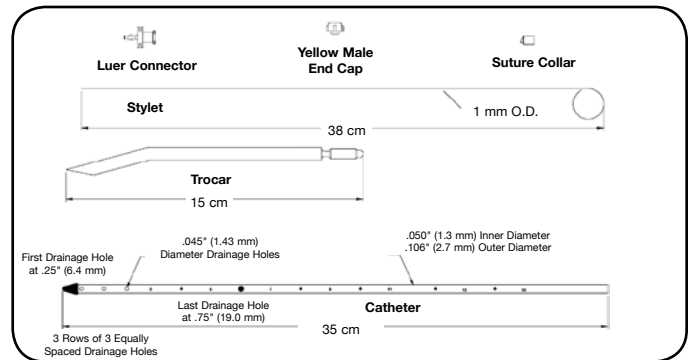
## Hermetic™ Ventricular Catheter Set

Catalog No. **INS8220**

### Each catheter set contains:

- One (1) 35 cm ventricular catheter OD: 2.7 mm x ID: 1.3 mm
- One (1) 38 cm stainless steel stylet
- One (1) luer connector
- One (1) suture collar
- One (1) 15 cm 10 Fr trocar
- One (1) yellow male end cap

**Sterile, packaged individually**  
**Latex Free**



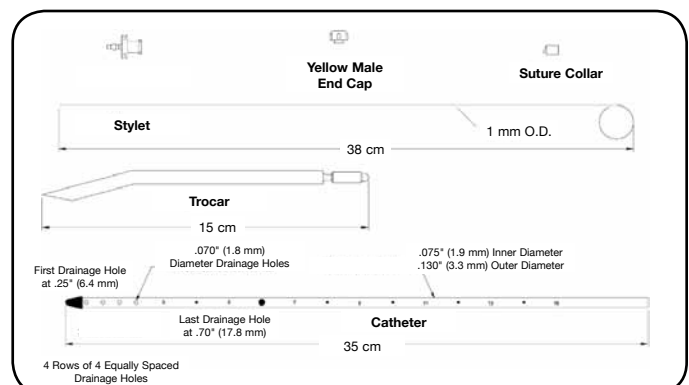
## TraumaCath™ Ventricular Catheter Set

Catalog No. **INS8420**

### Each catheter set contains:

- One (1) 35 cm ventricular catheter OD: 3.3 mm x ID: 1.9 mm
- One (1) 38 cm stainless steel stylet
- One (1) luer connector
- One (1) suture collar
- One (1) 15 cm 10 Fr trocar
- One (1) yellow male end cap

**Sterile, packaged individually**  
**Latex Free**



# Ventricular Drainage Catheters

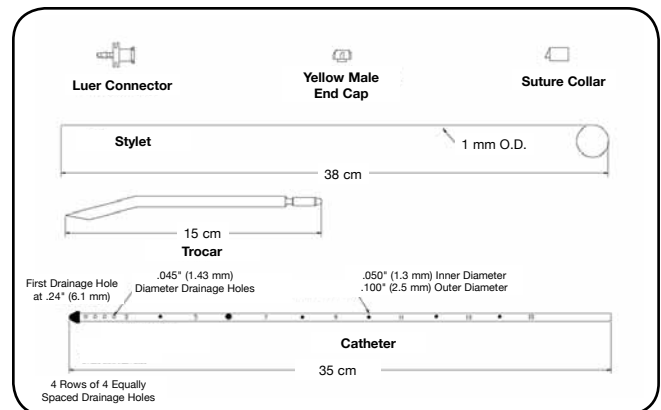
## Hermetic™ Ventricular Small Catheter Set

Catalog No. INS0001

### Each catheter set contains:

- One (1) 35 cm ventricular catheter OD: 2.5 mm x ID: 1.3 mm
- One (1) 38 cm stainless steel stylet
- One (1) luer connector
- One (1) suture collar
- One (1) 15 cm 10 Fr trocar
- One (1) yellow male end cap

**Sterile, packaged individually**  
**Latex Free**



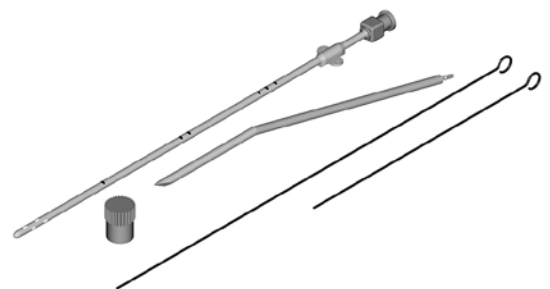
## Ventricular Catheter Accessory Kit (VCAK)

Catalog No. 951303

### Each catheter set contains:

- 35 cm 8 Fr radiopaque silicone elastomer straight ventricular catheter with large side holes and graphite length dots at 5, 10 and 15 cm from catheter tip
- OD: 2.7 mm; ID: 1.4 mm, 20 cm and 35 cm introducing rods
- Luer lock connector and watertight cap
- Suturable tubing clamp (8 Fr)
- Subcutaneous passer

**Sterile**



## Straight Ventricular Drainage Catheter

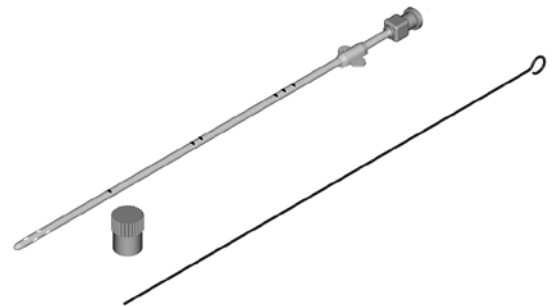
Catalog No. 901302

---

**Each catheter set contains:**

- 35 cm 8 Fr radiopaque silicone elastomer straight ventricular catheter with large side holes and graphite length dots at 5, 10 and 15 cm from catheter tip
- OD: 2.7 mm; ID: 1.4 mm, 20 cm and 35 cm introducing rods
- Luer lock connector and watertight cap
- Suturable tubing clamp (8 Fr)

**Sterile, packaged individually**  
**Latex Free**



## Intraventricular Monitoring Catheter Set (IVMCS)

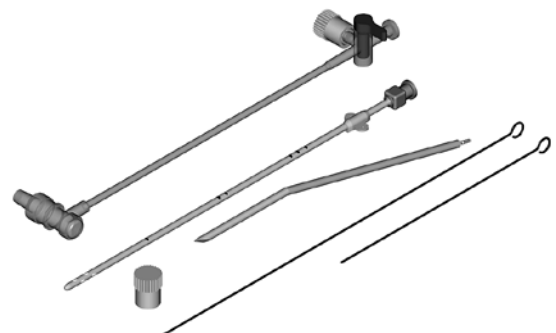
Catalog No. 910130A

---

**Each catheter set contains:**

- 35 cm 8 Fr radiopaque silicone elastomer straight ventricular catheter with large side holes and graphite length dots at 5, 10 and 15 cm from catheter tip
- OD: 2.7 mm; ID: 1.4 mm, 20 cm and 35 cm introducing rods
- Luer lock connector and watertight cap
- Suturable tubing clamp (8 Fr)
- T-connector/stopcock assembly with 3-way stopcock and self-sealing sampling port

**Sterile**





# Ventricular Drainage Catheters

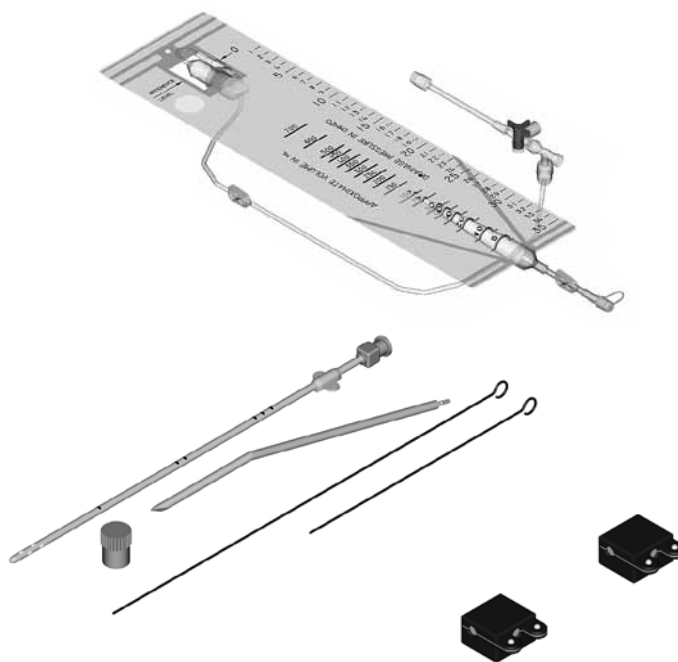
## Integra Ventricular Drainage Set (IVDS)

Catalog No.	Description
910412	Standard IVDS
910412B	IVDS with stopcock protection boxes (2)

### The Integral Ventricular Drainage Set contains:

- One (1) 35 cm ventricular catheter OD: 2.5 mm x ID: 1.3 mm
- One (1) 38 cm stainless steel stylet
- One (1) luer connector
- One (1) suture collar
- One (1) 15 cm 10 Fr trocar
- One (1) yellow male end cap

**Sterile, 1 unit per box**



## Hermetic™ Lumbar Catheter Closed Tip

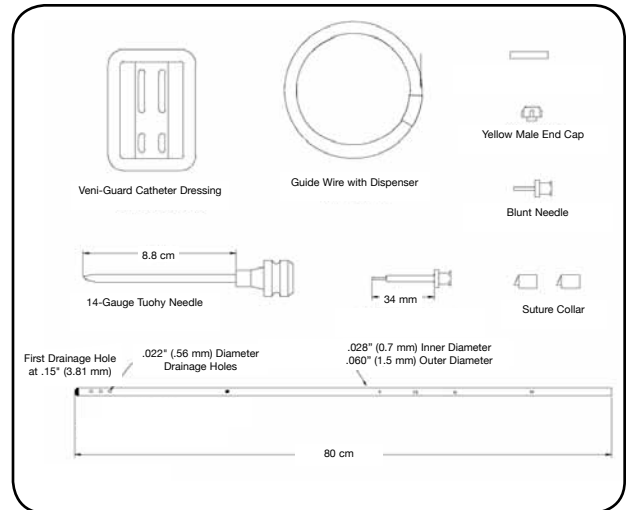
Catalog No. **INS5010**

### Each catheter set contains:

- One (1) 80 cm closed-end barium impregnated lumbar catheter  
OD: 1.5 mm x ID: 0.7 mm
- One (1) 14-gauge x 8.8 cm Tuohy needle
- One (1) flexible luer adapter
- Two (2) suture collars
- One (1) Veni-Guard® Dressing
- One (1) strain relief tubing
- One (1) Teflon® coated guidewire
- One (1) 22-gauge blunt needle
- One (1) yellow male end cap

**Sterile, packaged individually**

**Latex Free**



## Hermetic™ Lumbar Catheter Open Tip

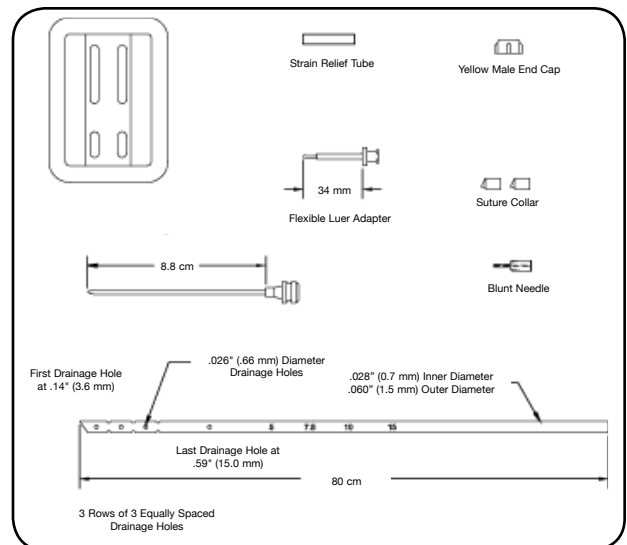
Catalog No. **INS8330**

### Each catheter set contains:

- One (1) 80 cm open-end barium impregnated lumbar catheter  
OD: 1.5 mm x ID: 0.7 mm
- One (1) 14-gauge x 8.8 cm Tuohy needle
- One (1) flexible luer adapter
- Two (2) suture collars
- One (1) Veni-Guard® Dressing
- One (1) strain relief tubing
- One (1) 22-gauge blunt needle
- One (1) yellow male end cap

**Sterile, packaged individually**

**Latex Free**



# Lumbar Drainage Catheters

## Lumbar Catheter Set

Catalog No.	Description
31127	<b>Lumbar Drainage Combo Kit</b> 10560 MoniTorr ICP™ Lumbar Prep Kit INS5010 Hermetic™ Lumbar Catheter Closed Tip 10140 MoniTorr ICP™ External CSF Drainage System with Self-Contained ICP Setting
31132	<b>Lumbar Drainage Combo Kit</b> 10560 MoniTorr ICP™ Lumbar Prep Kit INS5010 Hermetic™ Lumbar Catheter Closed Tip 10150 MoniTorr ICP™ External CSF Drainage System
10155	<b>External CSF Drainage System with Lumbar Catheter</b> INS5010 Hermetic™ Lumbar Catheter Closed Tip 10150 MoniTorr ICP™ External CSF Drainage System
10159	<b>External CSF Drainage System with Lumbar Catheter</b> INS5010 Hermetic™ Lumbar Catheter Closed Tip 10140 MoniTorr ICP™ External CSF Drainage System with Self-Contained ICP Setting
10560	<b>MoniTorr ICP™ Lumbar Procedure Prep Kit</b>

---

Sterile, packaged individually



## Integral Lumbar Drainage Set (ILDS)

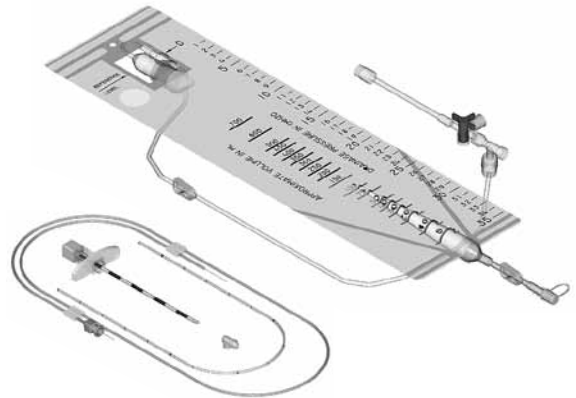
Catalog No. 910420

---

### The Integral Lumbar Drainage Set contains:

- Closed tip lumbar catheter with depth markers (80 cm, 5 Fr)
- Guide wire in dispenser
- 14 G Tuohy needle
- Luer lock connector
- Suturable tubing clamp (5 Fr)

Sterile, 1 unit per box



## Lumbar Catheter Accessory (LCAK)

Catalog No. 910121

---

### Each accessory kit contains:

- Radiopaque silicone elastomer catheter with closed tip and depth markers every 2 cm (80 cm, 5 Fr), OD: 1.6 mm; ID: 0.8 mm
- Suturable tubing clamp (5 Fr)
- Luer lock connector
- 14 G Tuohy needle
- Guide wire in dispenser

Sterile



## ICP Monitoring Cup Catheters

### Catalog No.

**910125**

### Description

Standard, 100 cm overall length-depth indicators at 10 cm and 20 cm from tip

**910126**

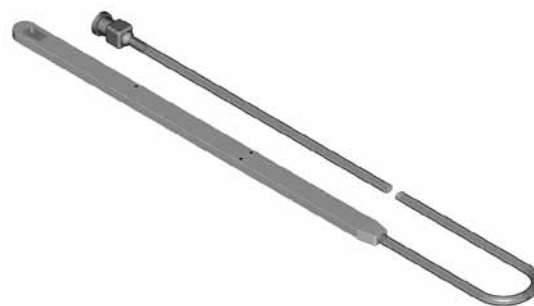
Pediatric, 85 cm overall length-depth indicators at 5 cm and 10 cm from tip

---

### Each catheter kit contains:

- Closed tip lumbar catheter with depth markers (80 cm, 5 Fr)
- Guide wire in dispenser
- 14 G Tuohy needle
- Luer lock connector
- Suturable tubing clamp (5 Fr)

**Sterile, 1 unit per box**



## Subdural Evacuation System

**Catalog No.**  
**951310**

**Description**

Subdural catheter kit: procedure-ready kit with disposable, stainless steel drill bit with adjustable stop (OD 5 mm), allen wrench, and subcutaneous passer

**951315**

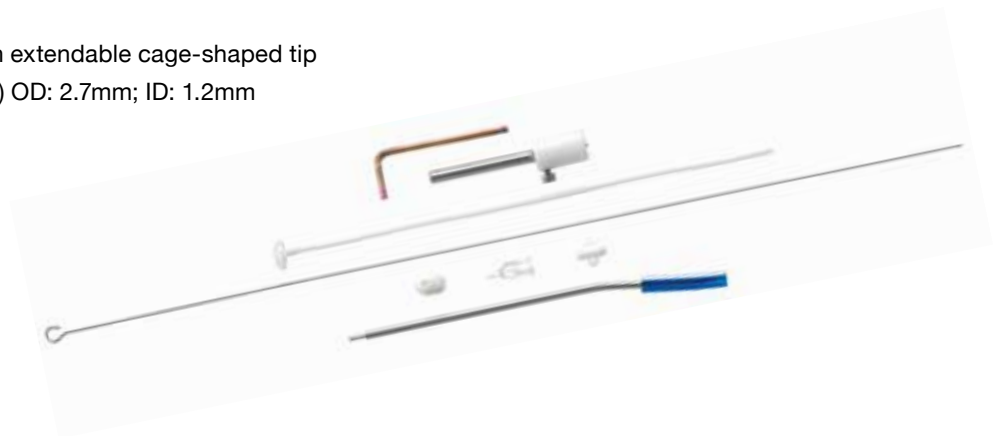
Subdural catheter



The unique design of the Subdural catheter provides a new and simplified approach for the treatment of chronic subdural hematomas. The catheter is easy to implant and explant, and the expanded catheter head provides stable placement.

**Each catheter kit contains:**

- Radiopaque silicone elastomer catheter with extendable cage-shaped tip and internal, polypropylene cup (25 cm, 8 Fr) OD: 2.7mm; ID: 1.2mm
- Introducing rod
- Right angle guide
- Luer lock connector
- Suturable tubing clamp (8 Fr)



**Sterile**

## Suction Reservoir Kit

**Catalog No.**

**910500**

**Each reservoir kit contains:**

- 100 cc. collapsible, silicone rubber reservoir with graduations every 25 cc
- Extension tubing
- Luer lock connector

**Sterile**



# Specialty Catheters

## Convenience Kits

**Catalog No.** 31223

---

**Complete Procedure Ready Kit contains:**

- 951-310
- INS-030
- 910-500



## Convenience Kits

**Catalog No.** 31253

---

**Complete Procedure Ready Kit contains:**

- 951-310
- INS-5HND
- 910-500



# Index

Alphabetical  
Numerical



# Index—Alphabetical

## A

Accessories & Cables for CAM01 or MPM1 .....	13
Accessories & Cables for SPM1 .....	13
AccuDrain External CSF Drainage System .....	34

## B

Basic External Drainage Systems .....	41, 42, 43, 44
Bolt Adapter .....	12

## C

Cable Matrix for CAM01 .....	14, 15
Cable Matrix for Licox® Monitors .....	20
Camino® Advanced Monitor .....	5
Camino® Monitors .....	5
Camino® Pressure Monitoring Accessories .....	12
Camino® Pressure Monitoring	
Catheter Kits .....	6, 7, 8, 9, 10, 11
Catheter Cable Extension 2.5 M .....	19
Complete Drainage and ICP Monitoring Set .....	44
Complete IMC Probe Kit with Temperature Probe ....	24
Complete Intracranial Pressure Monitoring Ki .....	7
Complete Intracranial Pressure Monitoring Kit .....	7
Complete Micro Ventricular Bolt Pressure	
Monitoring and Drainage Kit .....	10
Complete PMO Double Lumen Kit .....	23
Complete PMO Single Lumen Kit .....	22
Complete PMO Tunneling Kit .....	23
Complete Ventricular Tunneling Kit .....	17
Convenience Kits .....	62
Cranial Access Accessories .....	33
Cranial Access Kits .....	30, 31, 32
Cranial Access Kit (without Prep Solutions) .....	31
Cranial Access Kit (with Prep Kit) .....	30
Cranial Access Kit with Twist-Lock Drill Guard™ .....	32
CSF Drainage System .....	41
Customer Service Contact Information .....	2

## D

Drainage Accessory Kit .....	47
Drill Bits .....	12, 33

## E

Evolution Pole Mount .....	48
Extended Service Agreement Protection Plan .....	3
External CSF Drainage .....	27
External CSF Drainage and ICP Monitoring System ..	38
External Drainage Accessories .....	45, 46, 47, 49, 51
External Drainage Set (EDS) .....	43
External Ventricular Drainage Set (EVDS) .....	43

## H

Hand Drill .....	12, 33
Hermetic Plus™ External CSF Drainage System .....	36
Hermetic™ Large Style Ventricular Catheter Set .....	52
Hermetic™ Lumbar Catheter Open Tip .....	57
Hermetic™ Ventricular Catheter Set .....	53
Hermetic™ Ventricular Small Catheter Set ....	52, 54, 57

## I

ICP Monitoring Cup Catheters .....	60
Integral Drainage Set (IDS) .....	40
Integral Lumbar Drainage Set (ILDS) .....	59
Integra Standard Warranty .....	2, 28
Intracranial Pressure Monitoring Catheter Kit	
with Licox® IMC Bolt Fitting .....	11
Intraventricular Monitoring Catheter Set (IVMCS) .....	55

## L

Laser Level .....	35
Licox® Accessories and Cables .....	20, 25, 26
Licox® Brain Tissue Oxygen	
Monitoring System .....	21, 22, 23, 24
Licox® CMP Brain Tissue Oxygen	
and Temperature Monitor .....	21
Licox® Monitor Link with CMP Cable .....	24
Licox® PMO Combined Oxygen	
and Temperature Catheter .....	22
LimiTorr® Volume Limiting CSF Drainage System ....	37
LimiTorr® Volume Limiting CSF Drainage System	
Replacement Drain Bag .....	37, 45
Luer Lock Connectors .....	51
Lumbar Catheter Set .....	58
Lumbar Drainage Catheters .....	58, 59

## M

Micro Ventricular Bolt Pressure Monitoring Kit .....	9
Micro Ventricular Bolt Pressure/Temperature Monitoring Kit .....	9
Monitor Interface Cable .....	19
MoniTor ICP™ External CSF Drainage and Monitoring System .....	39
MoniTor ICP™ External CSF Drainage Bag System .....	42
MoniTor ICP™ External CSF Drainage System with Small Drip Chamber .....	41, 42
MoniTor ICP™ Replacement Drain Bag .....	46

## N

Neuromonitoring .....	1
Neuromonitoring Accessories and Cables .....	13, 14, 15

## O

OLM Intracranial Pressure Monitoring Kit .....	6
Ordering and Warranty Information .....	2, 3, 4, 28, 29

## P

Panel Mount External Drainage Systems .....	34, 35, 36
Pole Clamp for Ventrix® ICP Monitor .....	18
Pole Mount Assembly Systems .....	48, 49, 50
Pole Mount External Drainage Systems .....	37, 38, 39, 40
Post Craniotomy Subdural Pressure Monitoring Kit .....	8
Products Covered under Extended Service Agreement Program .....	4

## R

Replacement Collection Bags .....	34, 36
Replacement Drainage Bags .....	47
Replacement Laser .....	49

## S

Specialty Catheters .....	60, 61, 62
SPM1 .....	5
Straight Ventricular Drainage Catheter .....	55
Subdural Tunneling Pressure Monitoring Kit .....	16
Subdural Evacuation System .....	61
Suturable Tubing Clamps .....	51

System Mounting Bracket .....	49
-------------------------------	----

## T

To Measure Intracranial Pressure with Licox® Oxygen Monitoring: .....	26
Triple Lumen .....	24

## V

Ventricular Catheter Accessory Kit (VCAK) .....	54
Ventricular Drainage Catheters .....	52, 53, 54, 55, 56, 57
Ventricular Tunneling Pressure Monitoring Kit .....	17
Ventriculostomy .....	7
Ventrix® Accessories and Cables .....	18, 19
Ventrix® ICP Monitoring Catheter Kits .....	16, 17
Ventrix® Inservice Video or CDROM .....	19

## W

Warranty Information .....	2,3,4,32,33
----------------------------	-------------

# Index—Numerical

045M	12	910150	51
910-500	62	910153	51
951-310	62	910410	40
1104B	6	910410B	40
1104BC	7	910412	56
1104BT	6	910412B	56
1104G	8	910420	59
1104HM	9	910500	61
1104HMC	10	951303	54
1104HMT	9	951310	61
1104L	11, 26	951315	61
10100	39	999005	51
10102	39	999007	51
10110	39	999105	51
10110A	39	999108	51
10110D	39	A10	21
10130	41	A10US	25
10140	42	AC31	21
10150	42	APXX	13
10155	58	BC10	25
10159	58	BC10PA	21
10210	46	BC10PMO	21, 25
10212	46	BC10PV	21, 25
10560	58	BC10R	21, 25
31127	58	BC10S	21, 25
31132	58	BC10TA	21, 25
31223	62	BC10TV	25
31253	62	CAM01	5, 13
300733	12, 33	C8B	25
901302	55	D1	24, 25
910110A	43	D11	24, 25
910110N	43	ICPXX	13
910112A	43	ICTXX	13
910112N	43	IM3ST	24
910116A	47	INS0001	54
910116D	47	INS-5HND	62
910120A	44	INS5HND	31
910120N	44	INS-030	62
910121	59	INS030	12
910122	47	INS300	50
910123A	44	INS300L	50
910125	60	INS301	48, 49
910126	60	INS305	50
910128	51	INS400	48
910130A	55	INS400CM	48

INS400L .....	48, 49	PAC1 .....	13
INS400MM .....	48	PAC2 .....	13
INS405 .....	48	PMIOMPM .....	13
INS1100 .....	39	PMIOSPM .....	13
INS2100 .....	46	PMOCAB .....	21
INS2101 .....	37, 45	SP0075 .....	12, 33
INS4000 .....	52	SP0087 .....	12, 33
INS4500 .....	52	SP0088 .....	12, 33
INS5010 .....	57	VENRIXCDROM .....	19
INS7040 .....	32		
INS7250 .....	32		
INS7260 .....	32		
INS7270 .....	32		
INS7280 .....	32		
INS8220 .....	53		
INS8301 .....	36		
INS8302 .....	36		
INS8330 .....	57		
INS8400 .....	34		
INS8401 .....	34		
INS8420 .....	53		
INS8600 .....	38		
INS8601 .....	38		
INS8700 .....	34, 36, 45		
INS8901 .....	35, 48		
INS8902 .....	35		
INS9020 .....	37		
INS9030 .....	37		
INSHITH .....	30		
IP1P .....	22		
IP2P .....	23		
IT2 .....	23		
LML1 .....	24		
MPM1SDC .....	13		
MPM1TM .....	13		
MPMCDDROM .....	13		
NL950EC2 .....	19		
NL950FR .....	18		
NL950MCXX .....	19, 25		
NL950P .....	16		
NL950PC .....	18		
NL950SD .....	16, 26		
NL950V .....	17		
NL950VC .....	17		
NL850500V .....	41		
NL8508501 .....	41		
NL8508502 .....	41		







**OPERATE WITH CONFIDENCE™**



**Radionics®**  
Stereotaxy

**MAYFIELD®**  
Stabilization

**Auragen™**  
Brain Mapping

**Ruggles™**  
Instruments

**CUSA®**  
Tissue Ablation

**OSV II®**  
CSF Management

**DuraGen Plus®**  
Duraplasty

**Camino®**  
NeuroCritical Care

For more Information or to place an order please contact Customer Service.

Integra LifeSciences Corporation  
311 Enterprise Drive • Plainsboro, NJ 08536  
Customer Service USA and Canada: 800.997.4868 • Outside USA: 609.936.5400 • Fax: 888.980.7742  
[www.Integra-LS.com](http://www.Integra-LS.com)

USA and Canada  
800-997-4868  
609-936-5400 (Outside USA)  
888-980-7742 (Fax)

England  
+44 (0) 1264 345 700  
+44 (0) 1264 332 113 (Fax)

France  
+33 (0) 493 95 56 00  
+33 (0) 493 95 56 60 (Fax)

Germany  
0800 10 10 755  
06995 775 477 (Fax)

Camino, CUSA, DuraGen Plus, Integra NeuroSciences, OSV II, and Radionics are registered trademarks of Integra LifeSciences Corporation or its subsidiaries. Auragen, Operate with Confidence, Ruggles, and the Integra wave logo are trademarks of Integra LifeSciences Corporation or its subsidiaries. MAYFIELD is a registered trademark of SM USA Inc. and is used by Integra LifeSciences Corporation under license.  
©2009 Integra LifeSciences Corporation. All rights reserved. Printed in the USA. 10K NS897-10/09