

Miltex
Redefining Excellence



XCISION™ AND GRIP DEEP™ EXTRACTING FORCEPS

XCISION™ EXTRACTING FORCEPS

Miltex® Xcision™ brand Extracting Forceps are original forceps featuring a unique, light weight, ergonomic handle with tapered beaks. The handle features smooth circular openings for easy cleaning. In addition, the lightweight handles help reduce hand and wrist fatigue. The tapered beaks are designed to grip the tooth deeper in the socket, providing a smoother extraction and reduced trauma to the surrounding tissue.

Miltex® Xcision™ Extracting Forceps provide you:

- *Subgingival Access – Beaks are anatomically shaped and tapered to allow deeper access in the tooth socket*
- *Unique Ergonomic Handle – Smooth handle with circular openings reduces hand and wrist fatigue and aids cleaning*
- *Durability – Made from high quality German stainless steel, and features a plastic disk to help reduce wear on the hinge*



GET A GRIP...



Rounded beaks
allow deeper access
into the socket



Plastic disk helps
to reduce wear on
the hinge

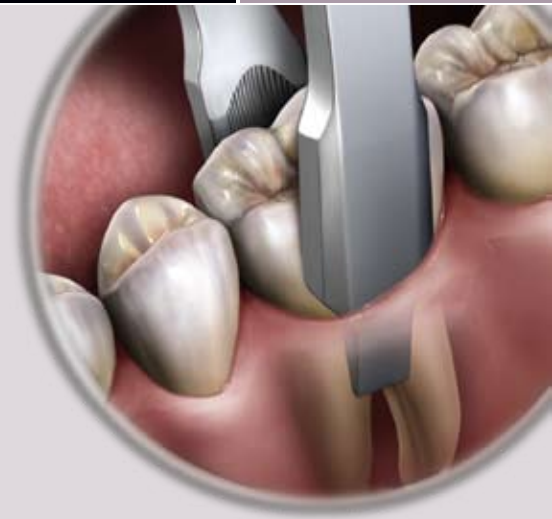
GRIP DEEP™ EXTRACTING FORCEPS

Now atraumatic extractions are easily within your grasp. Miltex® Grip Deep™ Extracting Forceps are designed to grip deep, giving you superior subgingival access into the tooth socket and greater tooth-to-forceps contact.

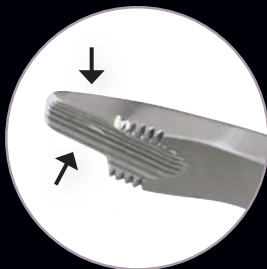
Our exclusive tapered, serrated beak is the secret to a smoother extraction and reduced trauma to surrounding tissues.

Miltex® Grip Deep™ Extracting Forceps give you:

- Precision tapered beaks for deeper access into the socket
- Multidirectional serrated beaks for better grip on tooth
- 11 specialized configurations for access to all areas of the mouth
- Lightweight ergonomic design
- Unique take-apart handle design for easier cleaning and hinge sterilization



...WORTH GETTING!



Tapered beaks allow deeper access into the socket



Take-apart feature to assist in cleaning the hinge area

Xcision™ Upper Roots

REF	Description
DEFXC44	Extracting Forceps, Xcision 44, Upper Roots Universal
DEFXC51SB	Extracting Forceps, Xcision 51SB, Upper Roots Universal
DEFXC51S	Extracting Forceps, Xcision 51S, Upper Roots, With Serrated Edges
DEFXC51W	Extracting Forceps, Xcision 51W, Upper Roots, With Serrated Beaks



DEFXC44



DEFXC51SB



DEFXC51S



DEFXC51W

Xcision™ Lower Roots

REF	Description
DEFXC45	Extracting Forceps, Xcision 45, Lower Roots
DEFXC45S	Extracting Forceps, Xcision 45S, Lower Roots with Serrations



DEFXC45



DEFXC45S

Xcision™ Upper Anteriors & Premolars

REF	Description
DEFXC7	Extracting Forceps, Xcision 7, Upper Premolar Universal
DEFXC34	Extracting Forceps, Xcision 34, Upper Anteriors
DEFXC35	Extracting Forceps, Xcision 35, Upper Premolars
DEFXC35M	Extracting Forceps, Xcision 35M, Upper Premolars, Modified Beak
DEFXC150	Extracting Forceps, Xcision 150, Upper Anterior Universal
DEFXC150S	Extracting Forceps, Xcision 150S, Upper Pedo Universal



DEFXC7



DEFXC34



DEFXC35



DEFXC35M



DEFXC150



DEFXC150S



Xcision™ Upper Molars

REF	Description
DEFXC17	Extracting Forceps, Xcision 17, Upper Molars, Right
DEFXC18	Extracting Forceps, Xcision 18, Upper Molars, Left
DEFXC67	Extracting Forceps, Xcision 67, Upper 3rd Molars
DEFXC67L	Extracting Forceps, Xcision 67L, Upper 3rd Molars, Left
DEFXC67R	Extracting Forceps, Xcision 67R, Upper 3rd Molars, Right



DEFXC17



DEFXC67L



DEFXC67



DEFXC18

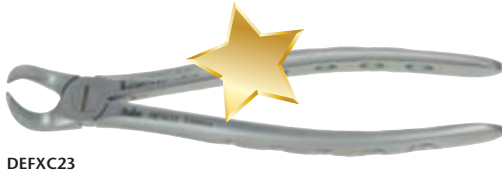


DEFXC67R



Xcision™ Lower Anteriors & Premolars

REF	Description
DEFXC23	Extracting Forceps, Xcision 23, Cowhorn Lower Molars
DEFXC36	Extracting Forceps, Xcision 36, Lower Anteriors
DEFXC36M	Extracting Forceps, Xcision 36M, Lower Anteriors, Modified Beak
DEFXC321	Extracting Forceps, Xcision 321, Lower Premolars
DEFXC151	Extracting Forceps, Xcision 151, Lower Anterior Universal
DEFXC151S	Extracting Forceps, Xcision 151S, Lower Anterior Pado Universal



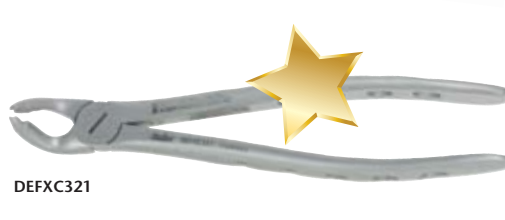
DEFXC23



DEFXC36



DEFXC36M



DEFXC321



DEFXC151



DEFXC151S

Xcision™ Lower Molars

REF	Description
DEFXC73	Extracting Forceps, Xcision 73, Lower Molars
DEFXC79	Extracting Forceps, Xcision 79, Lower 3rd Molars
DEFXC79M	Extracting Forceps, Xcision 79M, Lower 3rd Molars Modified Beak



DEFXC73



DEFXC79



DEFXC79M

Grip Deep™ Upper Forceps

REF	Description
DEFDG1STD	Extracting Forceps, Grip Deep 1 Standard
DEFDG65	Extracting Forceps, Grip Deep 65
DEFDG99C	Extracting Forceps, Grip Deep 99C
DEFDG150	Extracting Forceps, Grip Deep 150
DEFDG150A	Extracting Forceps, Grip Deep 150A
DEFDG210S	Extracting Forceps, Grip Deep 210S



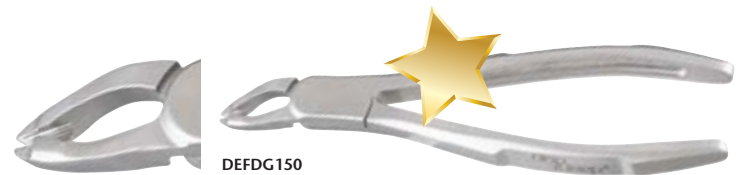
DEFDG1STD



DEFDG65



DEFDG99C



DEFDG150



DEFDG150A



DEFDG210S

Grip Deep™ Lower Forceps

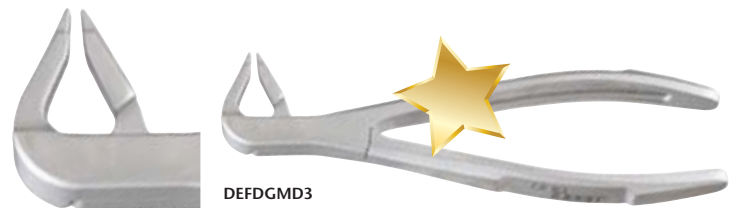
REF	Description
DEFDG222	Extracting Forceps, Grip Deep 222
DEFDG845	Extracting Forceps, Grip Deep 845
DEFDGMD3	Extracting Forceps, Grip Deep MD3
DEFDGMD4	Extracting Forceps, Grip Deep MD4
DEFDG151	Extracting Forceps, Grip Deep 151



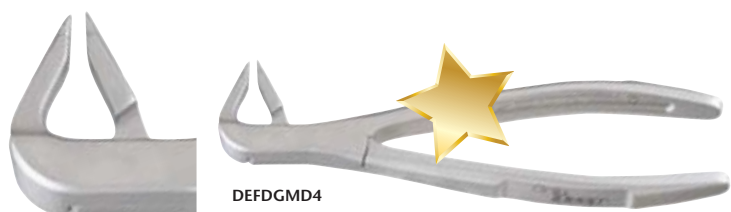
DEFDG845



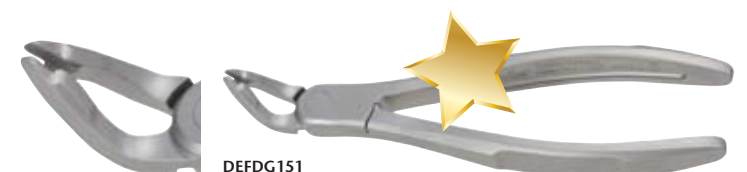
DEFDG222



DEFDGMD3



DEFDGMD4



DEFDG151



www.miltex.com

toll-free phone 866-854-8300

toll-free fax 866-854-8400

**Please call Customer
Service today for additional
information, an in-office
demonstration, to place an
order, or to receive other
Miltex catalogs.**



Miltex and Miltex Redefining Excellence are registered trademarks of Miltex, Inc., a subsidiary of Integra LifeSciences Corporation.
Xcision, Grip Deep and Moyco Union Broach are trademarks of Miltex, Inc.
Thompson is a registered trademark of Thompson Surgical Instruments.
The Integra wave logo is a trademark of Integra LifeSciences Corporation.
Copyright© 2009 Integra LifeSciences Corporation

