



**Integra®**  
**Cranial Stabilization**  
Product Catalogue

**Table of Contents**

|   |           |
|---|-----------|
| <b>Ordering and Warranty Information</b>                      | <b>4</b>  |
| <b>MAYFIELD® Triad Skull Clamp</b>                            | <b>5</b>  |
| <b>MAYFIELD® Base Units</b>                                   | <b>6</b>  |
| MAYFIELD® complete Skull Clamp system                         | 6         |
| MAYFIELD® Ultra 360 Patient Positioning System                | 7         |
| MAYFIELD® Ultra Base Unit                                     | 7         |
| <b>MAYFIELD® Swivel Adaptors</b>                              | <b>8</b>  |
| MAYFIELD® Swivel Adaptor                                      | 8         |
| MAYFIELD® Modified Swivel Adaptor                             | 8         |
| MAYFIELD® Ball Socket Swivel Adaptor                          | 8         |
| MAYFIELD® Tri-Star Swivel Adaptor                             | 9         |
| MAYFIELD® Modified Tri-Star Swivel Adaptor                    | 9         |
| <b>MAYFIELD® Skull Clamps</b>                                 | <b>10</b> |
| MAYFIELD® Infinity Skull Clamp system                         | 10        |
| MAYFIELD® Triad Skull Clamp                                   | 10        |
| MAYFIELD® Modified Skull Clamp                                | 11        |
| MAYFIELD® 2000 Skull Clamp                                    | 11        |
| <b>MAYFIELD® Skull Pins</b>                                   | <b>12</b> |
| MAYFIELD® Disposable Skull Pins (Steel)                       | 12        |
| MAYFIELD® Disposable Skull Pins                               | 12        |
| MAYFIELD® Radiolucent Skull Pins                              | 13        |
| MAYFIELD® Disposable Titanium Skull Pins                      | 13        |
| <b>MAYFIELD® Horseshoe Headrests</b>                          | <b>14</b> |
| MAYFIELD® complete Headrest System                            | 14        |
| MAYFIELD® Horseshoe Headrests                                 | 14, 15    |
| MAYFIELD® Papadopoulos Posterior Cervical Spine (PCS) Support | 15        |
| MAYFIELD® General Purpose Headrest                            | 15        |

|   |           |
|---|-----------|
| <b>MAYFIELD® Infinity Support System</b>                            | <b>16</b> |
| MAYFIELD® Infinity Support system                                   | 16        |
| MAYFIELD® Infinity Coupler  | 16        |
| MAYFIELD® Infinity Horsehoe   | 17        |
| MAYFIELD® Infinity General Purpose Headrest                         | 17        |
| <b>MAYFIELD® Infinity Skull Clamp System</b>                        | <b>18</b> |
| MAYFIELD® Infinity Skull Clamp                                      | 18        |
| MAYFIELD® Torque screw  | 18        |
| MAYFIELD® Rocker Arms   | 19        |
| MAYFIELD® Single Pin Accessory                                      | 19        |
| <b>BUDDE® Halo Retractor System</b>                                 | <b>20</b> |
| BUDDE® Halo Retractor System  | 20        |
| <b>Integra Brain retractor System</b>                               | <b>21</b> |
| Integra Brain retractor System                                      | 21        |
| <b>MAYFIELD® Accessories</b>  | <b>22</b> |
| MAYFIELD® NeuroGen Adaptor  | 22        |
| MAYFIELD® Crossbar Adaptor  | 22        |
| MAYFIELD® Universal Side Rail Fitting                               | 22        |
| Integra™ Cranial Stabilisation Covers                               | 22        |
| MAYFIELD® Instrument Wall Storage Unit                              | 23        |
| MAYFIELD® Horseshoe Conversion Adaptor                              | 23        |
| MAYFIELD® Triad Horseshoe Conversion Adaptor with Knobs             | 23        |
| BUDDE® Halo Side Rail Support                                       | 23        |
| <b>MAYFIELD® Infinity Radiolucent System</b>                        | <b>24</b> |
| MAYFIELD® Infinity Radiolucent system                               | 24        |
| MAYFIELD® Removable Rocker Arm                                      | 24        |
| MAYFIELD® Force Module mounted on a Metal-free Conversion accessory | 24        |
| MAYFIELD® Infinity XR2 Base Unit                                    | 25        |
| MAYFIELD® Infinity XR2 Skull Clamp with improved swivel lock knob   | 25        |
| MAYFIELD® Infinity XR2 Tri-Star Swivel Adaptor                      | 25        |
| <b>MAYFIELD® Radiolucent System</b>                                 | <b>26</b> |
| MAYFIELD® Radiolucent Horseshoe Headrest                            | 26        |
| <b>BUDDE® Halo Radiolucent Retractor System</b>                     | <b>27</b> |
| BUDDE® Halo Radiolucent Retractor system                            | 27        |
| <b>Index</b>  | <b>28</b> |

### Integra Limited Warranty

INTEGRA LIFESCIENCES CORPORATION and its wholly owned subsidiaries ("INTEGRA") warrant to INTEGRA authorized distributors and the original purchaser only that each new INTEGRA product is free from manufacturing defects in material and workmanship under normal use and service for a period of one (1) year (except as otherwise expressly provided as to accessory items) from the date of delivery by INTEGRA (or its authorized distributor) to the original purchaser, but in no event beyond the expiration date stated on any product labeling. For purposes of products sold by INTEGRA through an authorized distributor of INTEGRA, "original purchaser" shall include the purchaser of INTEGRA products to whom the distributor first sells the product.

- Surgical instruments are guaranteed to be free from defects in material and workmanship when maintained and cleaned properly and used normally for their intended purpose.
- Any covered product that is placed by INTEGRA under a lease, rental or installment purchase agreement and that requires repair service during the term of such placement agreement shall be repaired in accordance with the terms of such agreement.

If any covered defect occurs during the warranty period or term of such placement agreement, the purchaser or distributor should communicate directly with INTEGRA. If purchaser or distributor seeks to invoke the terms of this warranty, the product must be returned to INTEGRA. The defective product should be returned promptly, properly packaged and postage prepaid. Loss or damage in return shipment to INTEGRA shall be at sender's risk. INTEGRA's sole responsibility under this warranty shall be repair or replacement, at INTEGRA's sole discretion at INTEGRA's expense, subject to the terms of this warranty and applicable agreements.

IN NO EVENT SHALL INTEGRA BE LIABLE FOR ANY INCIDENTAL, INDIRECT, CONSEQUENTIAL OR PUNITIVE DAMAGES IN CONNECTION WITH THE ACQUISITION OR USE OF ANY INTEGRA PRODUCT. Further, this warranty shall not apply to, and INTEGRA shall not be responsible for, any loss arising in connection with the purchase or use of any INTEGRA product that has been repaired by anyone other than an authorized INTEGRA service representative or altered in any way so as, in INTEGRA's judgment, to affect its stability or reliability, or which has been subject to misuse, negligence or accident, or which has been used otherwise than in accordance with the instructions furnished by INTEGRA.

THIS INTEGRA LIMITED WARRANTY IS EXCLUSIVE AND IN LIEU OF ALL OTHER WARRANTIES, EXPRESS OR IMPLIED, AND OF ALL OTHER OBLIGATIONS OR LIABILITIES ON INTEGRA'S PART OR THE PART OF ITS DISTRIBUTORS, AND INTEGRA NEITHER ASSUMES NOR AUTHORIZES ANY REPRESENTATIVE OR OTHER PERSON TO ASSUME FOR IT ANY OTHER LIABILITY IN CONNECTION WITH INTEGRA'S PRODUCTS.

INTEGRA DISCLAIMS ALL OTHER WARRANTIES, EXPRESS OR IMPLIED INCLUDING ANY IMPLIED WARRANTY OF MERCHANTABILITY OR OF FITNESS FOR A PARTICULAR PURPOSE OR APPLICATION OR WARRANTY OF QUALITY AS WELL AS ANY EXPRESS OR IMPLIED WARRANTY TO PATIENTS. No warranty or guarantee may be created by any act or statement nor may this Standard Warranty be modified in any way, except as a result of a writing signed by an officer of INTEGRA. These limitations on the creation or modification of this warranty may not be waived or modified orally or by any conduct.

IN NO EVENT SHALL INTEGRA AUTHORIZED DISTRIBUTORS BE LIABLE TOWARDS THE ORIGINAL PURCHASER FOR ANY INCIDENTAL, INDIRECT, CONSEQUENTIAL OR PUNITIVE DAMAGES IN CONNECTION WITH THE ACQUISITION OR USE OF ANY INTEGRA PRODUCT. Further, this warranty shall not apply to, and INTEGRA authorized distributors shall not be responsible towards the original purchaser for, any loss, arising in connection with the purchase or use of any INTEGRA product that has been repaired by anyone other than an authorized INTEGRA service representative or altered in any way so as to affect its stability or reliability, or which has been subject to misuse, negligence or accident, or which has been used otherwise than in accordance with the instructions furnished by INTEGRA.

THIS INTEGRA DISTRIBUTOR LIMITED WARRANTY IS EXCLUSIVE AND IN LIEU OF ALL OTHER WARRANTIES TOWARDS THE ORIGINAL PURCHASER, EXPRESS OR IMPLIED, AND OF ALL OTHER OBLIGATIONS OR LIABILITIES TOWARDS THE ORIGINAL PURCHASER ON INTEGRA AUTHORIZED DISTRIBUTOR'S PART. INTEGRA AUTHORISED DISTRIBUTORS DISCLAIM ALL OTHER WARRANTIES TOWARDS THE ORIGINAL PURCHASER, EXPRESS OR IMPLIED INCLUDING ANY IMPLIED WARRANTY OF MERCHANTABILITY OR OF FITNESS FOR A PARTICULAR PURPOSE OR APPLICATION OR WARRANTY OF QUALITY AS WELL AS ANY EXPRESS OR IMPLIED WARRANTY TO PATIENTS.

### Customer Service Contact Information:

Integra Australia  
1300 550 599 (Tel)  
1300 550 699 (Fax)  
ordersau@integralife.com

Integra New Zealand  
0800 400 660 (Tel)  
1300 550 699 (Fax)  
ordersnz@integralife.com

## MAYFIELD® surgical devices A heritage of innovation and excellence



Developed by neurosurgeon Dr. Frank Mayfield; in 1968, our MAYFIELD® Headrest System is the gold standard in cranial stabilization equipment.



MAYFIELD® Triad Skull Clamp  
A1108

MAYFIELD®, the one headrest worthy of the name.

- Over 40 years of excellent service.
- Continual product development and improvement.
- New, innovative products.

## Illustration of a complete MAYFIELD® Skull Clamp System

MAYFIELD® Modified Skull Clamp (A1059) shown with the Ultra Base Unit (A2101), Swivel Adaptor (A1018), and Adult Disposable Skull Pins (A1047).



## MAYFIELD® Ultra 360 Patient Positioning System

New Support/Mounting device that facilitates attachment of MAYFIELD® Skull Clamps and Headrest System (A1012) to the OR table.

- Independent rotating and self-locking handles provide more fluid and flexible movement allowing better connection to the desired skull clamp position.
- Easier, more fluid movement for quicker positioning with skull clamp.
- Two double-cam action locking handles for easier opening and closing for secure, quick fixation.
- Set-up time is reduced because of the quick action handles.
- More flexible movement with added rotation for additional degrees of freedom.
- Unit can be placed in the reverse position to allow more reach and added height.
- Both a standard 360 Swivel Adaptor and a 360 Tri-star Swivel Adaptor are included.

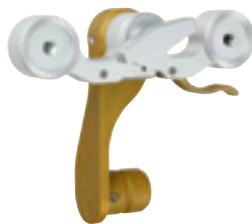
Catalog No. A2009

System includes:

| Component                     | Catalog # | Quantity |
|-------------------------------|-----------|----------|
| 360 Adaptor Assembly          | 41A1614   | 1        |
| 360 Tri-Star Adaptor Assembly | 41B1615   | 1        |



41A1614



41B1615

## MAYFIELD® Ultra Base Unit

Support/Mounting device that facilitates attachment of MAYFIELD® Skull Clamps and Headrest Systems to the OR table.

- 33% more weight and force bearing capacity for improved patient safety.

Catalog No. A2101





## MAYFIELD® Swivel Adaptor

Attaches to MAYFIELD® Base Unit to provide optimal flexibility in positioning via 360-degree rotation.

- Adapts headrests and skull clamps to MAYFIELD® Base Units.

Catalog No. A1018

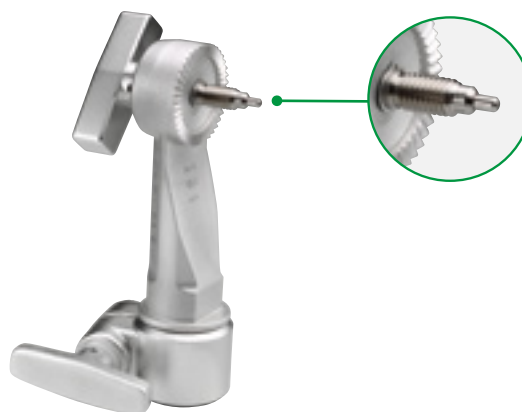


## MAYFIELD® Modified Swivel Adaptor

Same as A1018, with added spring-loaded pin; contacts ratchet arm of skull clamp to minimize all movement of the skull clamp components.

- Ideal for use with Image Guided Surgery (IGS) procedures.
- Compatible with all MAYFIELD® Skull Clamp, except the A1114 Infinity Skull Clamp.

Catalog No. A1115



## MAYFIELD® Ball Socket Swivel Adaptor

Attaches to MAYFIELD® Base Unit to provide optimal flexibility in positioning via 360-degree rotation with tilt in any axis.

- Unique locking pivot permits precise patient positioning.
- Exclusive spring-loaded mechanism provides assured stability and secure lock.
- Telescoping handle for easy access for tightening and loosening.

Catalog No. A1064







### MAYFIELD® Tri-Star Swivel Adaptor

Attaches to MAYFIELD® Ultra Base Unit (A-2101) to provide optimal flexibility in positioning via 360-degree rotation. Tri-Star must be used with the Ultra Base Unit, the locking levers on both are gold-coloured for easy and convenient matching.

- Provides two additional starbursts to facilitate attachment of ancillary components such as Image Guided Surgery (IGS) dynamic reference frames and articulating arms.
- Starburst can rotate 360-degrees independent of skull clamp.

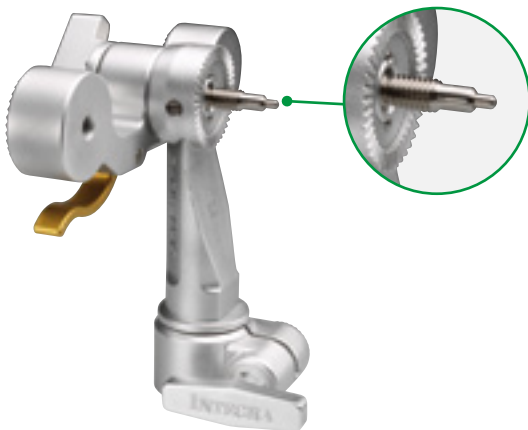
Catalog No. A2008

### MAYFIELD® Modified Tri-Star Swivel Adaptor

Same as A2008, with added spring-loaded pin; contacts ratchet arm of skull clamp to minimize all movement of the skull clamp components.

- Compatible with all MAYFIELD® skull clamps, except the A1114 Infinity Skull Clamp.

Catalog No. A1116



## MAYFIELD® Infinity Skull Clamp System

Provides 3-point rigid cranial fixation.

- Added length and curved contours of the skull clamp uprights allow clamp to better interface with the horseshoe headrests of the Infinity Support System.
- Multiple rocker arm options:  
Standard, Triad, Paediatric, Single-pin.
- 80 lb and 18 lb Torque Screw options.

Catalog No. A1114



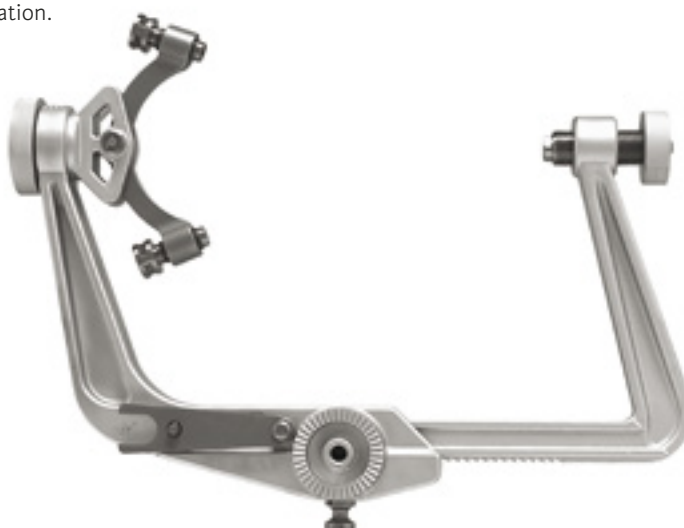
See p.18 for complete system description.

## MAYFIELD® Triad Skull Clamp

Provides 3-point rigid cranial fixation.

- Provides visual indication of clamping force on ALL THREE skull pins.
- Ability to adjust the force on ALL THREE skull pins.
- Equal impingement of pins ensures firm skull positioning and fixation.

Catalog No. A1108



**MAYFIELD® Modified Skull Clamp**

Provides 3-point rigid cranial fixation.

- Flexibility and safety in positioning of skull pins around critical areas.
- Quick-release lock.

Catalog No. A1059

**MAYFIELD® 2000 Skull Clamp**

Provides 3-point rigid cranial fixation.

- Streamlined body design and low profile single pin side facilitates greater exposure to the operative site.
- Unique swivel rocker arm mechanism permits greater flexibility in patient positioning.

Catalog No. A2000



## MAYFIELD® Adult Disposable Skull Pins (Steel)

Fit all MAYFIELD® Skull Clamps to allow rigid cranial fixation.

- Red O-ring connotes a disposable product; ensures a secure fit.

Catalog No. A1083



## MAYFIELD® Child Disposable Skull Pins (Steel)

Fit all MAYFIELD® Skull Clamps to allow rigid cranial fixation.

- Pinpoint reduced to control penetration when used with a child.
- Red O-ring connotes a disposable product; ensures a secure fit.

Catalog No. A1084



## MAYFIELD® Adult Disposable Skull Pins

Fit all MAYFIELD® Skull Clamps to allow rigid cranial fixation.

- “Wings” design of the pin body improves the fit into receptacle holes of all MAYFIELD® Skull Clamps.
- Unique finger grooves molded into the pin body facilitate sure grip and easy removal from pin holders.
- Plastic base steel tip.

Catalog No. A1072





### MAYFIELD® Adult Disposable Radiolucent Skull Pins

Fit all MAYFIELD® Skull Clamps to allow rigid cranial fixation.

- Engineered from synthetic Sapphire material to significantly limit artifact during CT and MR imaging.
- “Wings” design of the pin body improves the fit into receptacle holes of all MAYFIELD® Skull Clamps.
- Unique finger grooves molded into the pin body facilitate sure grip and easy removal from pin holders.

Catalog No. A2020



### MAYFIELD® Adult Disposable Titanium Skull Pins

Fit all MAYFIELD® Skull Clamps to allow rigid cranial fixation.

- Designed and tested for use in MR systems up to 3.0 Tesla (T)\*.
- “Wings” design of the pin body improves the fit into receptacle holes of all MAYFIELD® Skull Clamps.
- Unique finger grooves molded into the pin body facilitate sure grip and easy removal from pin holders.

Catalog No. A1120



### MAYFIELD® Child Disposable Titanium Skull Pins

Fit all MAYFIELD® Skull Clamps to allow rigid cranial fixation.

- Pinpoint reduced to control penetration when used with a child.
- Designed and tested for use in MR systems up to 3.0 Tesla (T)\*.
- “Wings” design of the pin body improves the fit into receptacle holes of all MAYFIELD® Skull Clamps.
- Unique finger grooves molded into the pin body facilitate sure grip and easy removal from pin holders.

Catalog No. A1119

## Illustration of a complete MAYFIELD® Headrest System



MAYFIELD® Adult Horseshoe Headrest (A1012) with Ball Socket Swivel Adaptor (A1064) and Ultra Base Unit (A2101).

### MAYFIELD® Adult Horseshoe Headrests

Horseshoe shaped headrest provides cranial support in the prone or supine position for adults and older children.

- Vertical and lateral adjustments allow flexibility in patient positioning.
- Adjustable pad base accommodates various head sizes.
- Fluid resistant gel pads provide comfort and reduce the incidence of pressure necrosis.
- Pulley Rod attachment for skeletal traction.
- Can be attached to the transitionnal member of the MAYFIELD® Ultra Base unit A2101 thanks to the A1110 MAYFIELD® Triad Horseshoe conversion adaptor with knobs (see page 19).

Catalog No. A1012



A1012

- Same as A1012 except connection is made directly to the Transitional member for chin-to-chest positioning.
- Can be attached to the MAYFIELD® swivel adaptors or A2009 MAYFIELD® Ultra 360 patient positioning system thanks to the A1109 MAYFIELD® Horseshoe conversion adaptor (see page 19 of the catalogue).

Catalog No. A1011



A1011

### MAYFIELD® Paediatric Horseshoe Headrest

Horseshoe shaped headrest provides cranial support in the prone or supine position for infants and young children.

- Vertical and lateral adjustments allow flexibility in patient positioning.
- Adjustable pad base accommodates various head sizes.
- Fluid resistant gel pads provide comfort and reduce the incidence of pressure necrosis.
- Easily cleaned.
- Can be attached to the MAYFIELD® swivel adaptors or A2009 MAYFIELD® Ultra 360™ patient positioning system thanks to the A1109 MAYFIELD® Horseshoe conversion adaptor (see page 19 of the catalogue).

Catalog No. A1051



### Papadopoulos Posterior Cervical Spine (PCS) Support

Supports the cervical spine in an anatomical position.

- Firm posterior cervical spine support for anterior approaches.
- Ratcheting System allows for easy intraoperative cervical extension.
- Base is radiolucent to facilitate intraoperative imaging.

Catalog No. A1073



### MAYFIELD® General Purpose Headrest

Provides cranial support and positioning when rigid fixation is not needed.

- Headrest pads easily contour to a patient's head.

Catalog No. A1008





## MAYFIELD® Infinity Support System

Provides multiple headrests for cranial support in the prone or supine position for paediatric patients (ages 5+) and adults.

The MAYFIELD® Infinity attaches to any MAYFIELD® Base Unit, and creates a method for simultaneous application of a head support (adult, paediatric or general purpose) and a skull clamp. This is especially important for patients who require a low clamping force to stabilize the position of the head, such as paediatric patients (ages 5+) and trauma patients.

The Infinity head supports can be positioned close to the O.R. Table, which is important for patients with short neck lengths.

Catalog No. A1112



Infinity system with the Ultra Base Unit A2101.

System includes:

| Component                        | Catalog # | Quantity |
|----------------------------------|-----------|----------|
| Infinity Support Coupler         | 419B1010  | 1        |
| Horseshoe – Paediatric           | 419A1030  | 1        |
| Horseshoe – Adult                | 419A1031  | 1        |
| Horseshoe – General Purpose      | 419A1050  | 1        |
| Mini Gel Pad for General Purpose | 419A1048  | 2        |
| Storage Case (not pictured)      | 419A1060  | 1        |

Replacement Gel Pads:

| Component                        | Catalog # | Quantity |
|----------------------------------|-----------|----------|
| Paediatric – Left                | 440C1011  | 1        |
| Paediatric – Right               | 440C1012  | 1        |
| Adult – Left                     | 41C1444   | 1        |
| Adult – Right                    | 41C1445   | 1        |
| Mini Gel Pad for General Purpose | 419A1048  | 1        |

Illustration of the Infinity Support System mounted on the Ultra Base Unit A2101, the MAYFIELD® Swivel Adaptor A1018 and the MAYFIELD® Triad Skull Clamp A1108.



## MAYFIELD® Infinity Coupler (not sold separately)

- Coupler easily mounts to any MAYFIELD® Base Unit.
- Head supports can be adjusted vertically and laterally for flexibility in patient positioning, then securely locked in place.
- Position of head support can be tilted on ball socket joint and locked in place.

Catalog No. 419B1010



**MAYFIELD® Infinity Adult Horseshoe (not sold separately)**

- Provides cranial support for adults and older children in either prone or supine positions.
- Adjustable pad base (faceplates) accommodates various head sizes.
- Fluid resistant gel pads provided for comfort and reduction in the incidence of pressure necrosis.
- Easily cleaned.

Catalog No. 419A1031

**MAYFIELD® Infinity Paediatric Horseshoe (not sold separately)**

- Provides cranial support in either prone or supine positions for infants and young children.
- Same benefits of the MAYFIELD® Infinity Adult Horseshoe (419A1031).

Catalog No. 419A1030

**MAYFIELD® Infinity General Purpose Headrest (not sold separately)**

- Provides cranial support in either supine or semi-sitting procedures.
- Mini gel pads can be positioned in multiple receptacles and can be tilted on their hinges.

Catalog No. 419A1050



## MAYFIELD® Infinity Skull Clamp

Multiple, quick-change, snap-in rocker arm options provide the ability to match the stabilization points to the size of the patient's head for optimal fixation and surgical access. No tools are needed to change rocker arms.

Catalog No. A1114



MAYFIELD® Infinity Skull Clamp System (A1114) includes:

| Component                  | Catalog # | Quantity |
|----------------------------|-----------|----------|
| Infinity Skull Clamp       | A1114     | 1 each   |
| Adult Rocker Arm           | 419B1204  | 1 each   |
| Child's Rocker Arm         | 419B1205  | 1 each   |
| MAYFIELD® Triad Rocker Arm | 419B1206  | 1 each   |
| Single Pin Accessory       | 419A1207  | 1 each   |
| Reduced Load 18-lb o       | 419A1208  | 1 each   |
| 80-lb Torque Screw         | 419A1209  | 1 each   |
| Adjustment Wrench          | 41A1482   | 1 each   |
| Storage Case               | 419A1250  | 1 each   |

Infinity Skull Clamp shown with:

- 80-lb Torque Screw
- Standard Adult Rocker Arm
- Infinity Support System A1112
- MAYFIELD® Ultra Base Unit A2101
- MAYFIELD® Tri-Star Swivel Adaptor A2008

## MAYFIELD® Torque Screw

Along with the standard MAYFIELD® 80-lb Torque Screw, a reduced load 18-lb Torque Screw is provided for procedures where lower, more controlled pressure and less penetration of the pins is desired.

(Note: The reduced load 18-lb Torque Screw should always be used in conjunction with a horseshoe headrest or other form of primary patient head support.)



80-lb Torque Screw  
Catalog No. 419A1209



18-lb Torque Screw  
Catalog No. 419A1208



### MAYFIELD® Triad Rocker Arm

Provides visual indication of clamping force of the two pins on the rocker arm. Also has the ability to adjust clamping force on each pin. Set-up is repeatable, making training of the application of skull clamps relatively easy.

Catalog No. 419B1206



### MAYFIELD® Standard Adult Rocker Arm

The same two-pin rocker that is provided with the standard MAYFIELD® skull clamp.

Catalog No. 419B1204



### MAYFIELD® Child's Rocker Arm

Rocker Arm configured for smaller size patient skulls.

Catalog No. 419B1205



### MAYFIELD® Single Pin Accessory

Provides a directly opposing point of stabilization with the pin in the Torque Screw. Flexibility in positioning of pins around critical areas and the surgical site.

Catalog No. 419A1207

## BUDDE® Halo Retractor System

Attaches to MAYFIELD® Skull Clamps or to the side rails of the OR table to provide a sturdy platform for retraction or hand rest for the surgeon.

- Double-Hinged ContinuTrac halo ring provides 360-degrees of uninterrupted retractor arm placement for ultimate flexibility.
- Low profile design allows for ease of instrument passage within the surgical field.
- Ideal for posterior fossa procedures.
- Blades can be micro-manipulated without flex arm extension readjustment.

Catalog No. A1040



Shown on a MAYFIELD® Triad Skull Clamp (A1108, see on page 5) and A2008 MAYFIELD® Tri-Star Adaptor Modified (seen on page 9).

System includes:

| Component                              | Catalog # | Quantity |
|--|-----------|----------|
| ContinuTrac™ Halo Ring                 | 438B1178  | 1        |
| 9" (229 mm) Halo Flex Arm              | 438A1011  | 3        |
| BUDDE® Halo Support Bracket            | 438B1010  | 2        |
| BUDDE® Halo Support Rod (5/16")        | 438A1188  | 2        |
| BUDDE® Halo Pattie Tray                | 438A1037  | 1        |
| BUDDE® Halo Mini Vise - SS (Not Shown) | 438A1140  | 1        |
| BUDDE® Curved Retractor                | 438A1077  | 2        |
| TEW Micro Retractor Blades - SS        | 438A1082  | 1        |
| TEW Micro Retractor Blades - SS        | 438A1083  | 1        |
| Halo Adjustment Wrench                 | 438A1024  | 2        |
| Halo Poly Vac Sterilization Case       | 438A1096  | 1        |

Optional Accessories:

| Component                                   | Catalog # |
|---|-----------|
| 12" (300 mm) Halo Flex Arm - SS             | 438A1012  |
| 6" (150 mm) Halo Flex Arm - SS              | 438A1160  |
| Hooked Micro Retractor Blades (2 mm) - SS   | 438A1151  |
| Hooked Micro Retractor Blades (4 mm) - SS   | 438A1152  |
| BUDDE® Tapered Retractor Blades - SS        | 438A1154  |
| Serrated Micro Retractor Blades (2 mm) - SS | 438A1155  |
| Serrated Micro Retractor Blades (4 mm) - SS | 438A1157  |
| Samy Vascular Retractors Short (3, 5, 7 mm) | 438A1200A |
| Samy Vascular Retractors Long (3, 5, 7 mm)  | 438A1200B |

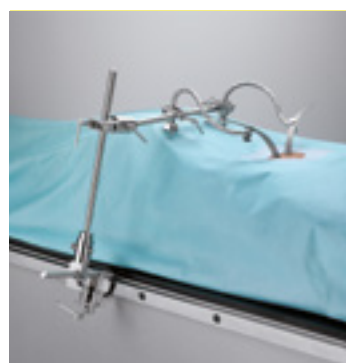


## Integra Brain retractor system

The next generation in Retractor possibilities. This is a complete system with individual components providing as much or as little retraction as needed for each procedure.

- Floating Secondary Bars provide the versatility of the ball-socket for positioning the bar where it is needed.
- Only a Primary Bar, Floating Secondary Bar, Retractor Arm, and a Retractor Blade is needed for retraction, providing a precious ease of set up.

Catalog No. A2012



System includes: SIDE RAIL ATTACHMENT

- For those cases where a skull clamp is not utilized, the Integra Brain Retractor System can be attached directly to the side rails of the OR table
- By connecting the Integra Brain Retractor System to the side rails of the OR table, the Integra Brain Retractor System can also be used for spine cases as well

| Component   | Catalog # | Quantity |
|---|-----------|----------|
| Primary bars and clamp assembly                           | 417A1000  | 2 each   |
| Floating Secondary Bars                                   | 417A1001  | 4 each   |
| Retractor Arms 9.5"                                       | 417A1002  | 4 each   |
| Handrest  | 417A1003  | 1 each   |
| PATTIE Tray   | 417A1004  | 1 each   |
| Tapered Retractor Blade, 1/4" to 3/4"(6.4 mm to 19.1 mm)  | 417A1005  | 1 each   |
| Tapered Retractor Blade, 5/32" to 5/8"(4.0 mm to 15.9 mm) | 417A1006  | 1 each   |
| Tapered Retractor Blade, 1/8" to 1/2"(3.2 mm to 12.7 mm)  | 417A1007  | 1 each   |
| Tapered Retractor Blade, 3/32" to 3/8"(2.4 mm to 9.5 mm)  | 417A1008  | 1 each   |
| Tapered Retractor Blade, 1/16" to 1/4"(1.6 mm to 6.4 mm)  | 417A1009  | 1 each   |
| Sterilization Case  | 417A1010  | 1 each   |



## MAYFIELD® NeuroGen Adaptor

Support/Mounting device that allows attachment of base units to the OR table when receptacle holes are absent or inappropriate.

- Fits a wide variety of table widths.
- Easily attaches to OR table side rails.
- Quick, adjustable end bracket to fit a wide range of table widths.
- Provides greater lateral adjustment with multiple mounting holes for base unit attachment.
- Several holes to better laterally adjust the set up of the system.

Catalog No. A1113



## MAYFIELD® Crossbar Adaptor

- For seated position procedures, easily mounts to the OR table side rails to adapt all MAYFIELD® Skull Clamps for posterior fossa craniotomy procedures or posterior cervical laminectomies.
- Allows for unobstructed view of the posterior cervical spine and occipital areas.
- Compatible with most currently available OR tables.

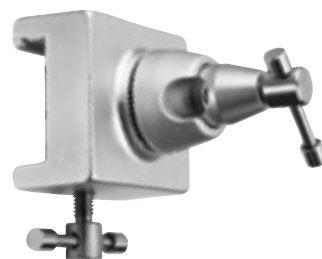
Catalog No. A1015



## MAYFIELD® Universal Side Rail Fitting

- For attaching the MAYFIELD® Crossbar Adaptor (A1015) and other products to the OR table.
- Compatible with most currently available OR tables.

Catalog No. A1060



## INTEGRA™ Cranial Stabilisation Covers

Non-Sterile, Disposable Covers designed to protect MAYFIELD® Systems.

- Reduce cleaning time.
- Protect critical components.
- Provide patients and staff an increased level of safety.

Catalog No. A1118







### MAYFIELD® Instrument Wall Storage Unit

Wall board used to organize and store MAYFIELD® products.

- Printed silhouettes allow quick and easy storage.
- Holds all MAYFIELD® Headrest components.

Catalog No. A1023



### MAYFIELD® Horseshoe Conversion Adaptor

Allows an A1011 MAYFIELD® Horseshoe Headrest and A1051 MAYFIELD® Paediatric Horseshoe Headrest to attach to A1018, A1064, A2008 and Adaptor assembly of the A2009 MAYFIELD® Ultra 360™ Patient positioning system.

Catalog No. A1109



### MAYFIELD® Triad Horseshoe Conversion Adaptor with Knobs

Allows an A1012 MAYFIELD® Horseshoe Headrest to attach to standard Transition Members.

- Provides a means of obtaining chin-to-chest positioning.

Catalog No. A1110



### BUDDE® Halo Side Rail Support

Allows the BUDDE® Halo Retractor System to attach directly to the operating table.

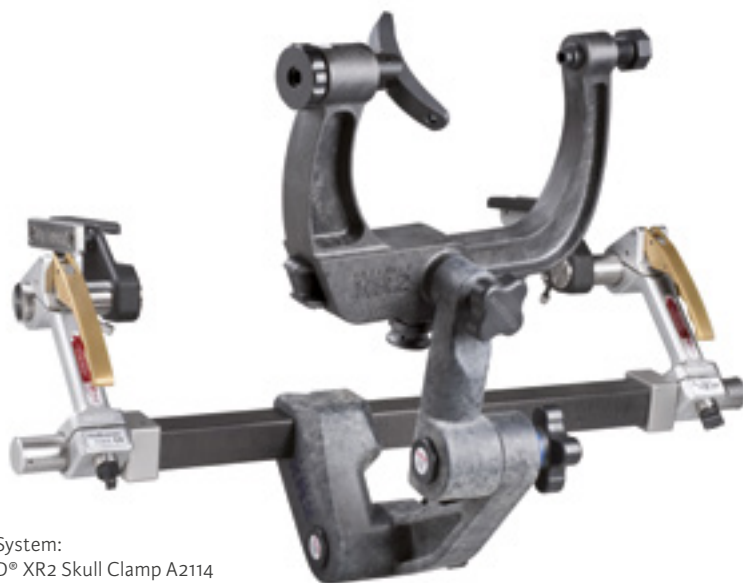
Catalog No. A1067

## MAYFIELD® Infinity Radiolucent System

MAYFIELD®, in a constant technological evolution strategy and always striving to bring new solutions to surgeons, re-design the MAYFIELD® Radiolucent product line.

Preservation of the target is key for visualization during imaging. Using metal cranial stabilization equipment during such surgeries results in unwanted artifacts in the image which hinder the capabilities and usefulness of images.

The new MAYFIELD® Infinity XR2 is part of the growing “Infinity” brand. Designed to upgrade the existing top-of-the-line Radiolucent Systems. All of the new components are backwards compatible to the existing Skull Clamp and Base Unit.



Total XR2 System:  
- MAYFIELD® XR2 Skull Clamp A2114  
- MAYFIELD® XR2 Swivel Adaptor  
- MAYFIELD® XR2 Base Unit A2079

## Removable Rocker Arm

- No tool is needed to remove the Rocker Arm for cleaning or changing to another size.
- Tapered shaft hold the Rocker Arm in place.

Catalog No. 439A1010



## Removable Child Rocker Arm

- Rocker Arm holds two skull pins, allows for positioning on smaller skull sizes.

Catalog No. 439A1091



## Force Module mounted on a Metal-Free Conversion Accessory

- Converts the skull clamp to be free of any metal in the product during imaging.

Catalog No. 439A1092 (metal-free conversion accessory)

Catalog No. 439A1093 (force module)





### MAYFIELD® Infinity XR2 Base Unit

Improved Rigidity for a more stable operating platform for the surgeon.

- Set-up and positioning is easy to set-up with the simplified linkage & components saving OR and staff time.
- Enhanced level of rigid fixation with a wide imaging window for procedures using to better accommodate intra-operative imaging modalities.
- Colour Code : the Blue and Yellow Base Unit Screws make it easy to install and take down for cleaning.
- Includes a standard Radiolucent Swivel Adaptor

Catalog No. A2079

### MAYFIELD® Infinity XR2 Skull Clamp with improved swivel lock knob



- 80-lbs Torque Knob on the single-pin side for a familiar position & easy to read.
- 1/4 turn Rocker Lock in a familiar style and easy to use.
- Removable Adult Rocker Arm for easy cleaning.
- Double-Pawl ratchet mechanism for easier application of the skull clamp by the surgeon to the patient.
- Includes the adult Rocker arm 439A1010

Catalog No. A2114



### MAYFIELD® Infinity XR2 Tri-Star Swivel Adaptor

- Designed to provide flexibility in positioning the patient's head by allowing rotation in 360 degrees.\*
- Provides two extra starburst attachments for ancillary equipment, when needed.\*\*
- Allows for a strong attachment of image-guided surgery components.\*\*
- Easy set-up and firm fixation onto the Base Unit and the Skull Clamp.\*

Catalog No. A2111

\* for both adaptors \*\*only for A2111

## MAYFIELD® Adult Radiolucent Horseshoe Headrest

- Can be used in conjunction with the MAYFIELD® Radiolucent System.
- Provides support in the prone and supine position during diagnostic examination or surgical procedures.
- Offers the same benefits of the standard Horseshoe Headrest (A1012).
- Composite carbon fiber provides strength, durability and minimal artifact during imaging.
- Designed to be used with the MAYFIELD® Infinity XR2 Base Unit A2079.

Catalog No. A2010



## MAYFIELD® Paediatric Radiolucent Horseshoe Headrest

- Can be used in conjunction with the MAYFIELD® Radiolucent System.
- Provides support in the prone and supine position for children during diagnostic examination or surgical procedures.
- Offers the same benefits of the standard Horseshoe Headrest (A1012).
- Composite carbon fiber provides strength, durability and minimal artifact during imaging.

Catalog No. A2011





BUDDE® Halo Radiolucent A1096  
shown on a XR2 Infinity Skull Clamp A2114.

## BUDDE® Halo Radiolucent Retractor System

Attaches to MAYFIELD® Radiolucent Skull Clamps. Provides a sturdy platform for retraction and a ready support or hand rest for the surgeon.

- Radiolucent components allow the system to remain in place during intraoperative imaging for optimal efficiency.
- Compatible with the MAYFIELD® Radiolucent Headrest System (A2114), the BUDDE® Halo Radiolucent Retractor System is designed to significantly reduce or limit artefact during intracranial procedures.
- Imaging compatible titanium retractor arms can remain in place during scanning.
- Ring can be quickly changed to a half ring set-up for improved access.
- Blades can be micro-manipulated without flex arm extension readjustment.

Catalog No. A1096

### System includes:

| Component                                   | Catalog # | Quantity |
|---|-----------|----------|
| Halo ring                                   | 443A1000  | 1 chacun |
| 9" (229 mm) halo flex arm - TI              | 443A1070A | 3 chacun |
| Rod support clamp assembly                  | 443A1060  | 2 chacun |
| Radiolucent support rod                     | 443B1052  | 2 chacun |
| BUDDE® Halo Pattie tray - SS                | 438A1037  | 1 chacun |
| BUDDE® Halo Mini Vise - SS                  | 438A1140  | 1 chacun |
| BUDDE® Halo adjustment wrench               | 443A1004  | 1 chacun |
| BUDDE® Halo Poly Vac sterilization case     | 443A1005  | 1 chacun |
| Retractor arm support                       | 443A1082  | 3 chacun |
| Samy vascular retractors short (3, 5, 7 mm) | 438A1200A | 3 chacun |
| Samy vascular retractors long (3, 5, 7 mm)  | 438A1200B | 3 chacun |

### Optional Accessories:

| Component                                       | Catalog # |
|---|-----------|
| 12" (300 mm) Halo flex arm - TI                 | 443A1070B |
| 6" (150 mm) Halo flex arm - TI                  | 443A1070C |
| TEW hooked micro retractor blades (2 mm) - SS   | 438A1151  |
| TEW hooked micro retractor blades (4 mm) - SS   | 438A1152  |
| BUDDE® Tapered retractor blades - SS            | 438A1154  |
| TEW serrated micro retractor blades (2 mm) - SS | 438A1155  |
| TEW serrated micro retractor blades (4 mm) - SS | 438A1157  |

**Products**  
**References**

## #

|                                    |    |
|------------------------------------|----|
| 360 Adaptor Assembly.....          | 7  |
| 360 Tri-Star Adaptor Assembly..... | 7  |
| 2000 Skull Clamp .....             | 11 |

## A

|   |        |
|---|--------|
| Accessories .....                         | 22, 23 |
| Adjustment Wrench .....                   | 18     |
| Adult Disposable Skull Pins.....          | 12     |
| Adult Disposable Titanium Skull Pins..... | 13     |
| Adult Horseshoe Headrest .....            | 14     |
| Adult Radiolucent Horseshoe Headrest..... | 26     |
| Adult Rocker Arm.....                     | 18     |

## B

|  |        |
|--|--------|
| Ball Socket Swivel Adaptor.....                | 8, 14  |
| Base Units.....                                | 6, 7   |
| BUDDE® Curved Retractor.....                   | 20     |
| BUDDE® Halo .....                              | 27     |
| BUDDE® halo adjustment wrench .....            | 27     |
| BUDDE® halo mini vise .....                    | 27     |
| BUDDE®Halo Mini Vise.....                      | 20     |
| BUDDE® halo pattie tray .....                  | 27     |
| BUDDE®Halo Pattie Tray .....                   | 20     |
| BUDDE® Halo Radiolucent .....                  | 27     |
| BUDDE® Halo Radiolucent Retractor System ..... | 20, 27 |
| BUDDE® Halo Retractor System .....             | 20     |
| BUDDE® Halo Side Rail Support.....             | 23     |
| BUDDE® Halo Support Bracket.....               | 20     |
| BUDDE®Halo Support Rod .....                   | 20     |
| BUDDE® tapered retractor blades .....          | 27     |
| BUDDE® Tapered Retractor Blades.....           | 20     |

## C

|   |        |
|---|--------|
| Child Disposable Skull Pins (Steel).....  | 12     |
| Child Disposable Titanium Skull Pins..... | 13     |
| Child's Rocker Arm .....                  | 18, 19 |
| ContinuTrac™ Halo Ring .....              | 20     |
| Cranial Stabilisation Covers .....        | 22     |
| Crossbar Adaptor.....                     | 22     |

## D

|                             |   |
|-----------------------------|---|
| Disposable Skull Pins ..... | 6 |
|-----------------------------|---|

## F

|                               |    |
|-------------------------------|----|
| Floating Secondary Bars ..... | 21 |
| Force Module .....            | 24 |

## G

|                               |    |
|-------------------------------|----|
| Gel Pad .....                 | 16 |
| General Headrests .....       | 15 |
| General Purpose Headrest..... | 15 |

## H

|  |        |
|--|--------|
| Halo Adjustment Wrench.....            | 20     |
| Halo Flex Arm.....                     | 20, 27 |
| Halo Poly Vac sterilization case ..... | 27     |
| Halo Poly Vac Sterilization Case ..... | 20     |
| Halo ring .....                        | 27     |
| Handrest .....                         | 21     |
| Headrest System .....                  | 14     |
| Horseshoe – Adult.....                 | 16     |
| Horseshoe Conversion Adaptor .....     | 23     |
| Horseshoe – General Purpose .....      | 16     |
| Horseshoe Headrests .....              | 14     |
| Horseshoe – Paediatric.....            | 16     |

## I

|   |            |
|---|------------|
| Infinity Adult Horseshoe .....                                | 17         |
| Infinity Coupler .....  | 16         |
| Infinity General Purpose Headrest.....                        | 17         |
| Infinity Paediatric Horseshoe.....                            | 17         |
| Infinity Radiolucent System .....                             | 24, 25     |
| Infinity Skull Clamp .....                                    | 10, 18     |
| Infinity Skull Clamp System .....                             | 18, 19     |
| Infinity Support Coupler.....                                 | 16         |
| Infinity Support System .....                                 | 16, 17, 18 |
| Infinity XR2 Base Unit .....                                  | 25         |
| Infinity XR2 Skull Clamp with improved swivel lock knob ..... | 25         |
| Infinity XR2 Tri-Star Swivel Adaptor .....                    | 25         |
| Instrument Wall Storage Unit.....                             | 23         |
| Integra Brain retractor system .....                          | 21         |

## M

|                                      |                           |
|--------------------------------------|---------------------------|
| MAYFIELD® Triad.....                 | 5, 10, 16, 18, 19, 20, 23 |
| Metal-Free Conversion Accessory..... | 24                        |
| Micro retractor blade .....          | 27                        |
| Micro Retractor Blade .....          | 20                        |

## N

|                        |    |
|------------------------|----|
| NeuroGen Adaptor ..... | 22 |
|------------------------|----|



## P

|  |    |
|--|----|
| Paediatric Horseshoe Headrest .....                      | 15 |
| Paediatric Radiolucent Horseshoe Headrest .....          | 26 |
| Papadopoulos Posterior Cervical Spine (PCS) Support..... | 15 |
| PATTIE Tray .....  | 21 |
| Primary Bars.....  | 21 |

## R

|                                    |    |
|------------------------------------|----|
| Radiolucent Retractor System ..... | 27 |
| Radiolucent Skull Pins .....       | 13 |
| Radiolucent Support Rod .....      | 27 |
| Radiolucent System.....            | 26 |
| Removable Child Rocker Arm .....   | 24 |
| Removable Rocker Arm.....          | 24 |
| Retractor Arms .....               | 21 |
| Retractor Arm Support.....         | 27 |
| Rod Support Clamp Assembly .....   | 27 |

## S

|                                |             |
|--------------------------------|-------------|
| Samy vascular retractors ..... | 27          |
| Single Pin Accessory .....     | 18, 19      |
| Skull Clamp.....               | 6, 10, 11   |
| Skull Clamp System.....        | 6           |
| Skull Pins.....                | 12, 13      |
| Standard Adult Rocker Arm..... | 18, 19      |
| Sterilization Case .....       | 21          |
| Storage Case.....              | 16, 18      |
| Swivel Adaptor .....           | 6, 8, 9, 16 |

## T

|                                   |    |
|-----------------------------------|----|
| Tapered Retractor Blade.....      | 21 |
| TEW™ Micro Retractor Blades ..... | 20 |
| Torque Screw.....                 | 18 |
| Tri-Star Adaptor .....            | 20 |
| Tri-Star Swivel Adaptor .....     | 18 |

## U

|   |                  |
|---|------------------|
| Ultra 360 Patient Positioning System..... | 7                |
| Ultra Base Unit .....                     | 6, 7, 14, 16, 18 |
| Universal Side Rail Fitting.....          | 22               |

## V

|                          |    |
|--------------------------|----|
| Vascular Retractors..... | 20 |
|--------------------------|----|

## X

|                          |    |
|--------------------------|----|
| XR2 Base Unit.....       | 24 |
| XR2 Skull Clamp .....    | 24 |
| XR2 Swivel Adaptor ..... | 24 |
| XR2 System.....          | 24 |

|                 |        |                 |                  |
|-----------------|--------|-----------------|------------------|
| 41A1614 .....   | 7      | 443A1004 .....  | 27               |
| 41A1615 .....   | 7      | 443A1005 .....  | 27               |
| 41B1615 .....   | 7      | 443A1060 .....  | 27               |
| 41C1444 .....   | 16     | 443A1070A ..... | 27               |
| 41C1445 .....   | 16     | 443A1070B ..... | 27               |
| 417A1000 .....  | 21     | 443A1070C ..... | 27               |
| 417A1001 .....  | 21     | 443A1082 .....  | 27               |
| 417A1002 .....  | 21     | 443B1052 .....  | 27               |
| 417A1003 .....  | 21     |                 |                  |
| 417A1004 .....  | 21     | A1008 .....     | 15               |
| 417A1005 .....  | 21     | A1011 .....     | 14               |
| 417A1006 .....  | 21     | A1012 .....     | 7, 14            |
| 417A1007 .....  | 21     | A1015 .....     | 22               |
| 417A1008 .....  | 21     | A1018 .....     | 6, 8, 16         |
| 417A1009 .....  | 21     | A1023 .....     | 23               |
| 417A1010 .....  | 21     | A1040 .....     | 20               |
| 419A1030 .....  | 16, 17 | A1051 .....     | 15               |
| 419A1031 .....  | 16, 17 | A1059 .....     | 6, 11            |
| 419A1048 .....  | 16     | A1060 .....     | 22               |
| 419A1050 .....  | 16, 17 | A1064 .....     | 8, 14            |
| 419A1060 .....  | 16     | A1067 .....     | 23               |
| 419A1207 .....  | 19     | A1072 .....     | 12               |
| 419A1208 .....  | 18     | A1073 .....     | 15               |
| 419A1209 .....  | 18     | A1083 .....     | 12               |
| 419B1010 .....  | 16     | A1084 .....     | 12               |
| 419B1204 .....  | 19     | A1096 .....     | 27               |
| 419B1205 .....  | 19     | A1108 .....     | 5, 10, 16        |
| 419B1206 .....  | 19     | A1109 .....     | 23               |
| 438A1011 .....  | 20     | A1110 .....     | 23               |
| 438A1012 .....  | 20     | A1112 .....     | 16, 18           |
| 438A1024 .....  | 20     | A1113 .....     | 22               |
| 438A1037 .....  | 20, 27 | A1114 .....     | 10, 18           |
| 438A1077 .....  | 20     | A1115 .....     | 8                |
| 438A1082 .....  | 20     | A1116 .....     | 9                |
| 438A1083 .....  | 20     | A1118 .....     | 22               |
| 438A1096 .....  | 20     | A1119 .....     | 13               |
| 438A1140 .....  | 20, 27 | A1120 .....     | 13               |
| 438A1151 .....  | 20, 27 | A2000 .....     | 11               |
| 438A1152 .....  | 20, 27 | A2008 .....     | 9, 18            |
| 438A1154 .....  | 20, 27 | A2009 .....     | 7                |
| 438A1155 .....  | 20, 27 | A2010 .....     | 26               |
| 438A1157 .....  | 20, 27 | A2011 .....     | 26               |
| 438A1160 .....  | 20     | A2012 .....     | 21               |
| 438A1188 .....  | 20     | A2020 .....     | 13               |
| 438A1200A ..... | 20, 27 | A2079 .....     | 24, 25           |
| 438A1200B ..... | 27     | A2101 .....     | 6, 7, 14, 16, 18 |
| 438B1010 .....  | 20     | A2111 .....     | 25               |
| 438B1178 .....  | 20     | A2114 .....     | 24, 25           |
| 439A1010 .....  | 24     |                 |                  |
| 439A1091 .....  | 24     |                 |                  |
| 439A1092 .....  | 24     |                 |                  |
| 439A1093 .....  | 24     |                 |                  |
| 440C1011 .....  | 16     |                 |                  |
| 440C1012 .....  | 16     |                 |                  |
| 443A1000 .....  | 27     |                 |                  |



Distributed by

For more information or to place an order, please contact:

**Integra Australia**  
Unit 3, 24-30 Winterton Road,  
Clayton, Vic 3168 Australia  
1300 550 599 office • 1300 550 699 fax  
ordersau@integralife.com  
[integralife.com](http://integralife.com)

**Integra New Zealand**  
5B, Suite B 331 Rosedale Rd,  
Albany, Auckland, 0632, New Zealand  
0800 400 660 office • 0800 400 770 fax  
ordersnz@integralife.com  
[integralife.com](http://integralife.com)



Caution: Applicable laws restrict these products to sale by or on the order of a physician.  
All the references numbers mentioned on this document are CE marked according to European council directive 93/42/EEC on medical devices, unless specifically identified as "NOT CE MARKED".  
All text and diagrams contained in this catalog are intended as guidelines and are for illustrative purposes only. No information included in this catalog is intended to replace the Directions for Use packaged with each Integra product. Always refer to the appropriate Directions for Use for complete clinical instructions. For technical and additional clinical information on Integra products, please contact your Integra NeuroSpecialist.  
Availability of these products might vary from a given country or region to another, as a result of specific local regulatory approval or clearance requirements for sale in such country or region.  
BUDDE and the Integra logo are trademarks or registered trademarks of Integra LifeSciences Corporation or its subsidiaries. Microsensor and Codman are registered trademarks of their owners. MAYFIELD is a registered trademark of SM USA, Inc. and is used by Integra LifeSciences Corporation under license.